



**बड़ौदा यू.पी. बैंक**  
**Baroda U.P. Bank**

पत्रांक : 2021-22/RM/BALLIA-I/ 2316

दिनांक : 29.12.2021

**TENDER FOR ELECTRICAL & LAN CABLING WORK OF REGIONAL OFFICE-  
BALLIA-1**

Baroda UP Bank, Regional Office, Ballia-1, Indira Market Near Chittu Pandey Chauraha, Ballia invites sealed tender for ELECTRICAL & LAN CABLING WORK for our Regional Office, Ballia-1.

- |                                       |  |
|---------------------------------------|--|
| 01. Tender Issuing Date               | : 29.12.2021   |
| 02. Last Date of submission of Tender | : 18.01.2022 till 3.00 PM  |
| 03. Date of Opening of Tender         | : 19.01.2022 till 3.00PM   |
| 04. Tender to be Addressed to         | : The Regional Manager<br>Baroda UP Bank<br>Regional Office, Ballia-1<br>Indira Market, Near Chittu Pandey<br>Chauraha, Ballia, 277001 |

**Terms & Condition of Tender :**

- Rates should be quoted on the space provided in the **annexure attached only.** No other sheet/form should be used for quoting rates.
- Rates quoted only by bank's empanelled Vendor will be consider/accepted.
- The competent Authority (Bank) does not buying themselves to accept the lowest or to give any reasons for its decision of acceptance or rejection of tenders.
- Incomplete in any respect or conditional tender shall liable to be rejected.

**Other Conditions**

- The registration number along with GST no. allowed by the authorities must be submitted.
- PAN NUMBER of the firm allotted by the income tax authorities should be submitted (without which vendor's bid would became invalid and shall be liable to be reject).
- Conditional tenders shall not be accepted on any ground and shall be rejected straight.
- Any deviation of the conditions given by the purchaser will not be accepted and bid will be rejected without assigning any reasons.
- If any clarification is required the same should be obtained before submitting the bid.
- The Entire document must be signed with the seal and attached as a mark of acceptance of the terms & conditions.
- BUPB's reserve the right to accept or reject any bid whole or in parts without assigning any reason thereof.
- Bank's decision will be final and no correspondence will be entertained in this regard.
- In case of delay in submission/non submission of bids, Bank will not assume any responsibility.
- Bank may reject any or all quotation without assigning any reason.

**Tender Submission :**

Submission of the tender in sealed envelope super scribing "TENDER FOR ELECTRICAL & LAN CABLING WORK OF REGIONAL OFFICE BALLIA-1" addressed to Baroda UP Bank, Regional office Ballia-1, Indira market, near chittu pandey chauraha, Ballia- 277001, complete in all respect by 3.00 PM dated 18.01.2022. Tenders received after shall not be entertained.  
Tender must be submitted through hand to hand or through register post.

**Evaluation of Tender :**

Quoting incredibly low value of items with the view of subverting the tender process shall be rejected straight away.

Yours' Faithfully

(Shashi Bhushan)  
Regional Manager



क्षेत्रीय कार्यालय, बलिया-प्रथम, इन्दिरा मार्केट, निकट चित्तू पाण्डेय चौराहा, बलिया-277001, टेलीफोन: 05498-222417, 6389203010  
Regional Office, Ballia-1, Indira Market, Near Chittu Pandey Chauraha, Ballia-277001, Telephone: 05498-222417, 6389203010  
e-mail: ROBALL@barodauprb.co.in

**Detail Tender for Electrical work LAN Cabling work of Regional Office Ballia-I**

Sl.No.	Particulars	Qty.	Unit	Rate/Unit Rs. P.	Amount Rs. P.
1.	S/F of plug socket board consisting of 3 plug 5 Amp. three pin, three switch and one indicator with 1.5 sq mm separate circuit wiring for computer .	21	No		
2.	S/F of UPS earthing-S/burying of Dual pipe technology (Pipe in Pipe) earthingelectrode having GI 80mm O/D pipe with 25 micron coating, 3metres long. The space between two pipes to be filled with Highly conducive & Non corrosive chemical compound. The vacant space between pipe & hole shall also be filled with Compound all around. The job also includes S/F of GI strip clamp with two holes (with SS/GI bolts & nuts) on the electrode& taking two earthing leads of 4mm dia copper wire (Assumed length of 10m -beyond 10m to be paid extra) upto Main panel complete in all respects with guaranteed E/N voltage of less than 2 volts and resistance less tahn 1ohms. The 4mm dia Cu. earth wire shall be terminated on a separate 6way earthlink. The connections for Panel earthing& earth bus in the panle should be taken from this earthlink	3	No		
3.	Supplying and fixing recessed mounting fittings with suitable for 35/40 watt LED 600x600 Square fitting with PDC Aluminum die cast housing with poly Corbonet diffuser, in built electrical 110 LM Per watt protection like over voltage, short circuit, over loading, mis wiring for additional safety precaution rated light 50000 hours, (Guaranteed for above LED light is three month from period of installation) Make Crompton Cat No. LCTLRNE-36-FO-CDL,LED 36W or Philips make Model No. 380 LED 42S DN (38 W) Wipro Cat- Garnet Slim LED D414065 (All complete with Lamps	26	No		



Sl.No.	Particulars	Qty.	Unit	Rate/Unit Rs. P.	Amount Rs. P.
4.	S/W 10 Amp. Plug point with 2.5 sq mm copper wire in counter with continuous earthing wire complete in all respect with modular switches /socket.	24	No		
5.	S/F of LED Batten 20 watt light Fitting with 1.5 sq mm wiring complete in all respect including modular switches	10	No		
6.	S/F of 20 Amp plug point with 2.5 sq mm wiring including modular switches /socket with continuous circuit wiring.	20	No		
7.	Supplying and wiring for Telephone point with twisted annealed, copper conductor PVC insulated and PVC sheathed telephone wire with socket in 14 SWG with all the accessories in concealed manner with 2-pin socket in suitable size of MS box.	22	No		
8.	Supplying and fixing 4 WAY TPN DB Double door 1p43 With 10-32 amp SP MCB 10 KA & 63 AMP 4 POLE MCB For A.C	03	No		
9.	Providing & Fixing of wall fans & point complete with 1.5 Sq mm wiring and modular switches.	20	No		
10.	Supplying and fixing of Call Bell in BM's cabin including wiring etc.	02	No		
11.	Supplying and Fixing of cabin fans (400Dia) in cash cabin/ in 1.5 sq mm wiring and modular switches.	0	No		
12.	Supplying and Fixing of circuit wiring for computer in 2.5 sq mm copper wire.	20	No		
13.	Supplying and Fixing of wiring for lights and fans 1.5 sq mm copper wire complete in all respect.	20	No		



Sl.No.	Particulars	Qty.	Unit	Rate/Unit Rs. P.	Amount Rs. P.
14.	Supplying and Fixing recessed mounting fittings with suitable for 18/20 Watt LED down Light fitting with PDC Aluminiumdiecast housing with Poly Corbonet diffuser, in built electrical protection like over voltage, short circuit, over loading, mis wiring for additional safety precaution rated light 50000 hours, (Guaranteed for above LED light is three month from period of installation) Philips make DN195BLED 20F (20 WATT) 6500 KA< Crompton Cat No. LCBE18 - CDL- 18 Watt & Wipro cat- Gernet slim D7112060/40/30 6500 KA (complete with all)	30	No		
15.	S/F of A.C. point wiring with 2x 4 sq mm+1x1.5 sq mm copper wire and metal socket MCB 20 Amp. complete For 1.5 Ton/	16	No		
16.	Supplying and Fixing of exhaust fan in toilet/hall 15 1inch dia 1.5 sq mm wiring and modular switches.	2	No		
17.	S/F of ceiling fan (1200 dia) with hooks in rooms with adding rod of suitable length wherever necessary including 1.5 sq mm wiring and modular switches and regulator	2	No		
18.	S & F of 12 way SPN DB double door with 10No SP MCB and 1 no DPMCB 40 AMP for computer	2	No		
19.	Supplying and fixing 4 WAY TPN DB Double door 1P43 With 10-32 amp SP MCB 10 KA & 63 AMP 4 POLE 100 MA RCCB For light, Fan & Supply complete	1	No		
20.	Sub main wiring of UPS input and UPS output power supply with 2 no 6 sq mm No. 4 sq mm copper flexible wire in PVC conduit pipe. (payment as/actual length on site)	70	Mtr		



Sl.No.	Items of Work	Qty.	Unit	Rate/Unit Rs. P.	Amount Rs. P.
21.	Sub main wiring of power supply from Main to TPN distribution Board with 4 nos 10 sq mm copper flexible wire and 1 no 6 sq mm earth wire in PVC conduit pipe. (payment as/actual length onsite)	70	Mtr		
22.	Supplying / Fabricating / installation of Panel Board made of 16 gauge CRC sheet 415 V Incoming: TPN MCCB 250 Amp _ 1 No 36 KA (4 pole) <b>Out going</b> 100 Amp MCCB 4 pole - 3 no 250 Amp Change Over 4 pole _ 1 No 63 Amp Change Over for ups _ 1 no and 63 Amp 4 Pole MCB - 1 no With Double Bus Bar Chamber  Complete with metering system	1	Set		
23.	Supply and fixing of Main line cable work from pole to DB in hall with 50sq mm x 3½ core cable with wiring. (Length to be as/site condition)	150	Mtr		
24.	Supply and fixing on board 3 no KIT KAT cut out 200 amp with neutral link on board	1	Job		
25.	S/F of ceiling fans (1200 dia) with hooks in rooms with adding rod of suitable length wherever necessary including 1.5 sq mm wiring and modular switches and regulator	0	No		
26.	S/F of light point (LED light 9 watt) in 1.5 sq mm wiring complete in all respect include modular switches.	30	No		
<b>LAN Cabling</b>					
27.	Supplying and drawing CAT 6 PVC insulated and Sheathed LAN cable through PVC conduit including testing, commissioning etc.as required.	850	Mtr		
28.	Supply and fixing of RJ modem Jack for computer including making connection, soldering etc	24	No		



26

Supply and Fixing of Patch Card  
with CAT & Jack

24

No

Total Rs.

GST18%

GRAND TOTAL

(Rs. --- Lacs --- Thousand --- Hundred Only.)



PROJECT - SPECIFICATION FOR FURNITURE & ELECTRICAL WORKS.		
BANK - BARODA U.P. BANK		
REGIONAL OFFICE- BALLIA-I		
* ALL WORKS TO BE DONE AS PER TENDER CONDITIONS.		
A	FURNITURE ITEMS	
1	LAMINATES (IS-2046) / VENEER	GREEN LAM / CENTURY / ARCHID / SAMRAT / FORMICA / SUNDEK OR APPROVED EQUIVALENT
2	COMMERCIAL PLY (IS-303) / WATERPROOF PLY (IS-710) / BLOCK BOARD (IS-1659) / FLUSH DOOR (IS- 2202)	ARCHID/ SAMRAT / CENTURY / EURO / GREEN OR APPROVED EQUIVALENT BY EIC.
3	ADHESIVES	FEVICOL / BLUECOAT/ VAMICOAL
4	LOCKS	GODREJ
	MULTIPURPOSE GROUP LOCK	E-MPL1-22 / E-MPL1C-22 (EBCO)
	NIGHT LATCH	8812 (GODREJ)
	CYLINDRICAL LOCK (SS MATT FINISH)	3792-WITH KEY AND 3786-KEYLESS (GODREJ) / C120SS (EUROPA)
	MORTISE DEAD LOCK (TWO WAY)	8815(GODREJ)
	MORTISE LOCK WITH DOOR HANDLE	MATIZ 8083(GODREJ)
5	DRAWER CHANNELS	GODREJ/ HATTICH/ OZONE
	TELESCOPIC CHANNELS (ZINK PLATED)	STD535(I)35/ STD525(I)35/ STD550(I)35/ STD560(I)35
	BOTTOM CHANNELS (POWDER COATED)	BMDS 35/ BMDS 37/ BMDS 55/ BMDS 60 (EBCO)
6	GENERAL HARDWARE	SS MATT FINISH
	DOOR STOPPER	I) BLACK/IVORY/BROWN/SILVER COLOR POWDER COATED DS1 (EBCO) II) SPRING TYPE BLACK/BROWN/IVORY COLOR POWDER COATED (FCGL'S STERLING)
	HINGES	I) 3"/4"/5"/6" 1.8MM TH. SS MATT FINISH (SUZU) II) 75X12X19 1.2 MM TH. SS MATT FINISH FOR STORAGE (SUZU) III) AUTO CLOSE HINGES – SLIP ON HINGE- EURO / CLICK ON HINGE-I (EBCO) FOR STORAGE
	HANDLES 'D' OR 'C' TYPE	1) 3"/4"/6"10MM DIA SS 202 MATT FINISH (ANJALI)
	TOWER BOLT	3"/4"/6"/8" BRASS EXTRUDED SS MATT FINISH (OSWAL)

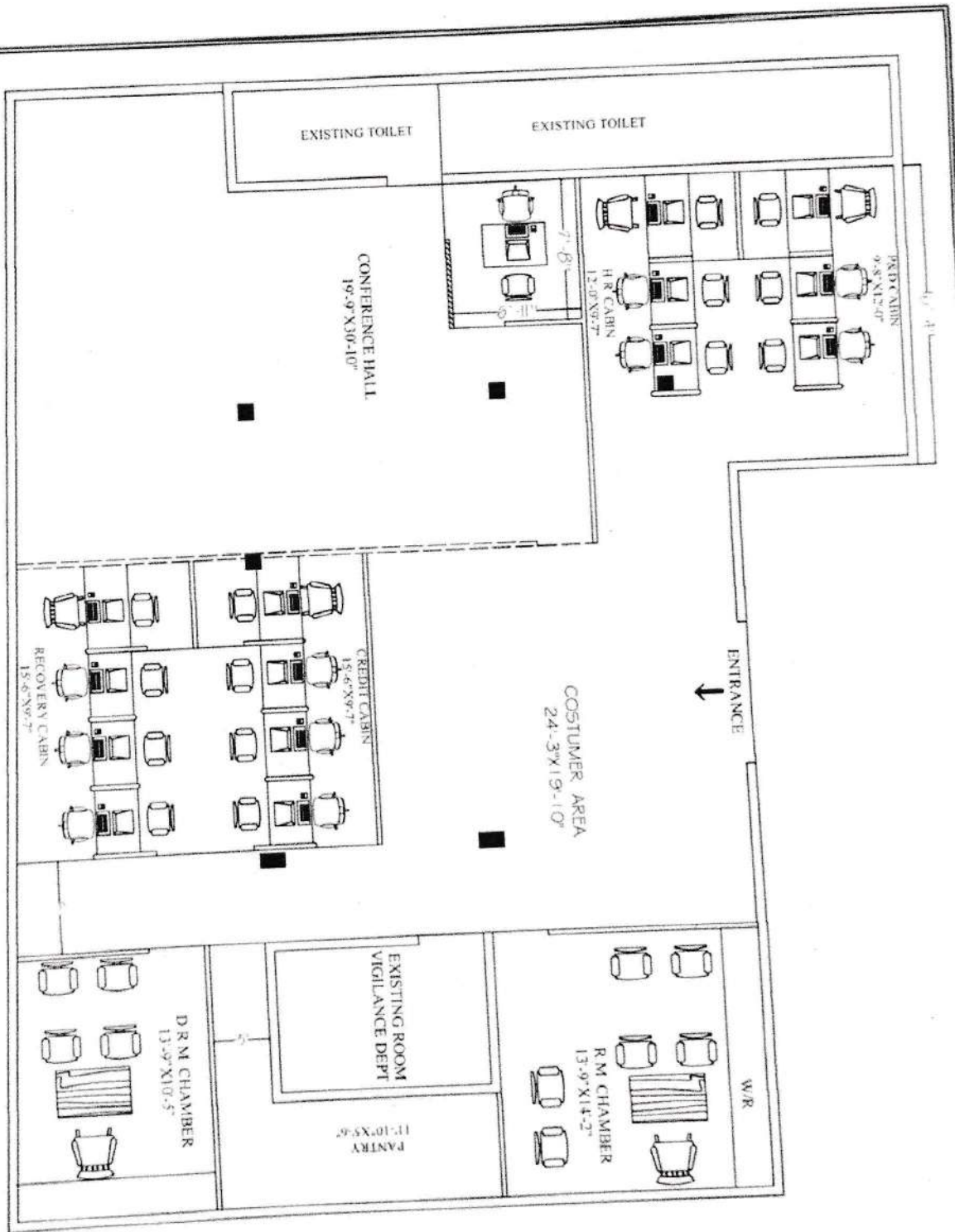


	SLIDING CHANNEL	EBCO MAKE APPROVED BY ARCHITEC/BANK.
7	FLOOR SPRING	
	60 KG	7477 (GODREJ) / M-74 (HARDWYN)
	80 KG	8293 (GODREJ) / M-74 (HARDWYN)
	100 KG	8294 (GODREJ) / M-76 (HARDWYN)
8	DOOR CLOSER	
	60 KG	DOUBLE SPEED 8292-SILVER, 7325- GOLDEN (GODREJ) / SCORPIO (HARDWYN)
	FIRE RATED 60 KG	1938 (GODREJ) / TRITON (HARDWYN)
9	PATCH FITTINGS FOR DOOR AND FIXED GLASS PARTITION (TOP/BOTTOM PATCH, PIVOT, PATCH LOCK, L ARM, L CONNECT, CONNECTOR, FLOOR SPRING, HANDLE, PLASTIC PROFILE)	GODREJ / XL C SERIES(DORMA) / OPF SERIES (OZONE) OR APPROVED EQUIVALENT
10	GLASS / MIRRORS	SAINT GOBAIN / MODI
11	ALUMINUM SECTION	JINDAL / INDAL / BANCO
12	WINDOW BLINDS	VISTA / AEROLUX/HUNTER DUGLUS / MAC
13	POLISH / PAINT	ASIAN PAINTS / BERGER / NEROLAC
14	PARTICLE BOARDS	NOVAPAN / DECO BOARD
15	COMPUTER ACCESSORIES	
	CPU HANGER/ SHELF	SIDE MOUNTED IS CPU HL SM (INNOFITT) /CPUSM(EBCO) ,
	CABLE MANAGER (60MM)	I) METAL - CO60ZN1(EBCO) II) PVC - CO 60 (EBCO) BLACK/IVORY/GREY COLOR
16	ACP PANEL	TIMEX / ALU DECOR / EURO OR APPROVED EQUIVALENT
19	WHITE FILM FOR GLASS	CRYSTAL / SONA MAKE VINYL FROSTED FILM
B	PAINTS	ICI, ASIAN, DULUX, BERGER, NEROLAC, JOHNSON & NICOLSON
1	ANTI CORROSIVE PAINT	TIKITAR, FINCOAT
2	RED OXIDE	ASIAN, DULUX, NEROLAC
3	POLISH	ASIAN MELAMINE
4	EXTERIOR PAINTS	DULUX WEATHERSHIELD OR APP. EQUIVALENT
5	ENAMEL PAINT	ICI, DULUX, ASIAN, NEROLAC
C	FALSE CEILING	
1	GYPSUM BOARD	GYPROC (SAINT GOBAIN)
2	FRAMING WITH COMPLETE SYSTEM	GYP STEEL ULTRA (SAINT GOBAIN), RAMCO FUJI
3	HILUX BOARDS	RAMCO OR APPROVED EQUIVALENT
4	MINERAL FIBRE TILES CEILING WITH COMPLETE SYSTEM	ARMSTRONG/SAINT GOBAIN/USG

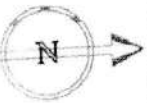


D	APPROVE MAKE LIST FOR ELECTRICAL	
1	PVC rigid conduits & Accessories:	1.5 mm thick ( MMS ) ISI and FIA approved - Precision / Vraj / Nihir / BLP / PFI / Anchor / Polycab make. ( Only white coloured pipes FRLS type to be used. )
2	L.T. Cables:	Havells / KEI / Polycab / R. R. Kable / Finolex.
3	Wires (FRLS):	Havells / KEI / Polycab / R. R. Kable / Finolex.
4	Main Distribution Boards:	MDS Legrand (Lexic) / Hager / Crabtree XPOA / Schneider ( Eazy 9 ) / L & T EXORA / C & S Wintrip / Siemens Bitaguard.
5	ELCB / RCCB / Miniature Circuit Breaker:	MDS Legrand (Lexic) / Hager / Crabtree XPOA / Schneider ( Eazy 9 ) / L & T EXORA / C & S Wintrip / Siemens Bitaguard.
6	Switch gears:	MDS Legrand (Lexic) / Hager / Crabtree XPOA / Schneider ( Eazy 9 ) / L & T EXORA / C & S Wintrip / Siemens Bitaguard.
7	Change Over Switch:	HPL Socomac/ Havells / L & T / Hager.
8	Domestic fittings:	
	a) All Switching Modular Accessories.	MK Wrapped Wround Plus / Schneider Livia / L & T entis / Crabtree Verona / Salzer Elite / Legrand Myris / C & S Divino / SSK Ace.
	b) Holders / ceiling roses	Anchor or equivalent approved make.
	c) Adhesive Tape	Bhor (Steel Grip) or approved .
9	10 - 30 A Polycarbonate Socket & Top:	MDS Legrand (Lexic) / Hager / Crabtree XPOA / Schneider ( Eazy 9 ) / L & T EXORA / C & S Wintrip / Siemens Bitaguard.
10	Telephone Wires / Cable:	Finolex / R. R. Kable / Havells / L & T / Polycab.
11	Telephone tag block:	Krone make.
12	Cable Lugs:	Dowell / Lotus / Jainson / 3 D.
13	Cable gland Single / Double Compression:	HMI / Comet / 3D.
14	Ammeter / Voltmeter:	AE / HPL / MECO/ Enercon make.
15	Selector switches:	L & T salzer / Kaycee make.
16	Indicator lamps:	LED type Teknic / Precifine/ Binay.
17	Connector strips:	Wago / Elmex make.
18	Lighting Fixtures :	Wipro / Philips / GE / Crompton. only
19	Exhaust fan (Light duty):	Khaitan / Crompton / Havells.
20	Ceiling Fan ( 5 star rated ):	Crompton ( High Breeze Plus ) / Havells.
21	Wall mounted Fan ( 5 star rated ):	Crompton ( High Flow Wave ) / Havells.
22	Data Cable - I / O Unit:	D - Link / Digi Link.





PROPOSED PLAN FOR:-  
BARODA U.P. BANK, REGIONAL OFFICE, BALLIA  
DRW. TITLE :- GR.FLOOR INTERIOR PLAN  
PLAN - (III) CARPET AREA - 2486.76 SQ.FT.



At RAJESH KUMAR SINGH (B.Arch)  
VISION ARCH  
Plot no. 166, V.D.A. Colony, Badalapur  
(Chandmari) Varanasi M No 9450165944  
EMAIL:- VARCH0036@GMAIL.COM

