

**Schedule of Quantity/ Tender of Furnishing work of Baroda U.P. Bank
Lakhanapar Chatti- Branch Distt. & R.O. Ballia-2**

S.No.	Item's of work	Qty	Unit	Rate	Amount(Rs.)
1.	Bank Low ht. Counter 2'-6" wide made out of 19mm thick board with drawer unit and front side 12mm thick Etching Glass Supported with Teak wood or Aluminum member With 1.0 mm thick laminate on the top & Drawer unit shall be provided on one side while with space for CPU by its side pull out tray on slide shall be provided on each counter for keeping keyboard. all the exposed edges shall have 6 mm. TW lapping duly polished inside surface shall be enamel painted two coats over primer coats. It shall be locks & handles etc. provision for wire management shall be made. Complete work as per branch Manager/ Architect Satisfaction.	16.00	Rft		
2.	P/F of Bank Cash counter in partition two level cash counter 5'-0" long (with 3'-10" and 2'-6" height) counter for customer to be 1'-6" wide and counter to be 3'-0" wide with drawer unit made out of 19mm thick board with 1.0 mm thick laminate on top and front and other internal surface to be painted/polished complete as per item no.1	5.0	Rft		
3.	P/F of Cash cabin partition front-over the counter supported on 2"x1-1/2" sal wood frame work cover with 8.0 mm thk. Etching glass supported of 1"x 1/2" beading with book window in size 5"x6" center of the counter with 2"x2" spacing Aluminium grill will be fixed in front of partition Side partition supported 2"x1-1/2" sal wood well seasoned structure with a cost of antitermite treatment up to 3'-0" height framing of inside area with 2"x1-1/2" sal wood section 2'-0"c/c				

(2)

- horizontal and vertical with both side
6mm thick ply&1.0mm thick laminates
both side. The upper portion up to 4'-0"
height shall be of 2'-1/2"x2"x2'-1/2"
Aluminum grill will be fixed complete
with all accessories and labour.
- 207.00 sft
4. P/F of Low Ht.(4'-6'' High) Partly glazed
Laminated Portion in **Branch Manager/
Advance dept. Cabin** the Under Framing
shall be of 2''x2'' sal wood (Anti termite Treatment)
for under framing at a max. distance 2'-0'' in each
direction. 6 mm th. Waterproof Ply shall be fixed on
two side & 1.0mm thick laminated shall be pasted over
its with chemical adhesive Provision shall be made
molding melamine Polished shall be fixed Wherever
necessary bottom 4'' width shall have 5mm th.
Plane glass
- 195.00 sft
5. P/F of Low Ht.(4'-6'' High) Laminated Portion
for **UPS Space** the Under Framing shall be of
2''x2''sal wood (Anti termite Treatment) for under
frame in at a max. distance 2'-0'' in each direction.
6 mm th. Waterproof Ply shall be fixed on two side &
1.0mm thick laminated shall be pasted over its with
Chemical adhesive
- 47.00 sft
6. P/F Low height partition/Wicket gate all
specification as item No.4 .
- 14.00 sft
7. Providing and fixing in position double leaf
powder coated **Aluminum** entrance door
made of 14 guage thick sheet. All member
shall be of 4"x1-3/4"section and bottom rail
shall be of 5"x1-3/4"section with 6mm thick
clear sheet glass including 4"dia 2 Nos. handles
10"long 2 Nos, Tower bolts, floor spring 2 Nos.
lock etc. complete.
- 105.00 sft
8. P/F of **Godrej Night latch.**
- 1.0 No
9. P/F of **Godrej mortic lock**
- 2.0 Nos
10. P/F of **Door closer** I.S.I mark
- 2.0 Nos.

(3)

11. Providing and fixing **Writing desk** in position box type Wooden writing in public space of approximate size 4'-0" x 2'-0" made out of 19mm thick good approved quality ply with 6" to 9" wide wide pigeon hole type compartments in the front facade boxing for keeping pay-in-ship, book literature etc. These Writing table's must have laminates 1.0 mm thick on top writing desk and two sides of the Boxes. With beading, lipping, molding and painting /polishing complete. 1.0 No.
12. Suggestion box 1.0 No.
13. Check Drop Box 1.0 No.
14. Providing and fixing **Aluminum grill** in cash cabin Grill Size 2-1/2"x2"x2-1/2" will be fixed complete with all accessories & labour. 49.0 sft
15. Providing and fixing in position **Notice boards** of approximate size 3'-0"x2'-0" and 6" deep made out of 19mm thick ply with fully glazed shutter in front and soft board with felt cloth lining at the back inclusive of good approved quality lock to this shutter, hinges, fixtures, handle etc. and front laminate /painted complete as directed by bank architect. 1.0 No.
16. Providing and placing in position **side units** made out of 19mm board with 1.0mm laminate with sliding hinged shutters (made out of 12mm thick ply with 1.0mm thick laminate on it) complete with handles etc. size 4'-0"x1'-6"x2'-6" 2.0 No.

(4)

17. Providing and fixing **Column/Wall paneling**
(8'-6" Height) paneling all specification as per
item no.4. 40.00 sft
18. Providing & fixing wooden **Filling Cabinet**
1'-6" deep to be fixed on the wall frame made out
of 19mm thick commercial ply with siding
hinge shutters made out of 12mm thick ply
with 1.0mm laminate on the front & side other
other internal surface to be painted as complete
with handle, lock, wall catches etc. 92.00 sft
19. P/F in Position **Branch Manager Table**
(Size-6'-0" x3'-0") made out of 19mm th.
water proof board with 1.0 mm th. Laminated
on all exposed surface (others external surface
shall be painted with two coats of enamel paint
over one coat of primer) It shall have one unit
on one side while provision to be made for pull
out tray on slides. the table to be finished in
TW/ HW lapping & godrej lock, handles, footrest,
latches all complete. 1.0 No.
20. P/F in Position **Officer Table**
(Size-5'-0" x2'-6") made out of 19mm th.
water proof board with 1.0 mm th. Laminated
on all exposed surface (others external surface
shall be painted with two coats of enamel paint
over one coat of primer) It shall have one unit
on one side while . 1.0 No.

Total Rs.-----

(Rs. ----- Lacs ----- Thousand ----- Hundred ----- Only.)

**Detail Tender for Electrical Work LAN Cabling work of Lakhanapar Chatti
Branch-Baroda U.P. Bank Ro-Balia-2**

Sl.No.	Particulars	Qty.	Unit	Rate/Unit Rs. P.	Amount Rs. P.
1.	S/F of plug socket board consisting of 3 plug 5 Amp, three pin, three switch and one indicator with 1.5 sq mm separate circuit wiring for computer .	10	No		
2.	S/F of UPS earthing-S/burying of Dual pipe technology (Pipe in Pipe) earthingelectrode having GI 80mm O/D pipe with 25 micron coating, 3metres long. The space between two pipes to be filled with Highly conductive & Non corrosive chemical compound. The vacant space between pipe & hole shall also be filled with Compound all around. The job also includes S/F of GI strip clamp with two holes (with SS/GI bolts & nuts) on the electrode& taking two earthing leads of 4mm dia copper wire (Assumed length of 10m -beyond 10m to be paid extra)upto Main panel complete in all respects with guaranteed E/N voltage of less than 2 volts and resistance less tahn 1ohms. The 4mm dia Cu. earth wire shall be terminated on a separate 6way earthlink. The connections for Panel earthing& earth bus in the panle should be taken from this earthlink	2	No		
3	S/W 10 Amp, Plug point with 2.5 sq mm copper wire in counter with continuous earthing wire complete in all respect with modular switches /socket.	6	No		
4	S/F of LED Batten 20 watt light Fitting with 1.5 sq mm wiring complete in all respect including modular switches	20	No		
5	S/F of 20 Amp plug point with 2.5 sq mm wiring including modular switches /socket with continuous circuit wiring.	6	No		
6	Providing & Fixing of wall mounted fans (400dia) complete with 1.5 Sq mm wiring and modular switches. The work to include making hole in wall	5	No		

7	Supplying and Fixing of cabin fans (400Dia) in cash cabin/ in 1.5 sq mm wiring and modular switches.	1	No		
8	Supplying and Fixing of circuit wiring for computer in 2.5 sq mm copper wire.	10	No		
9	Supplying and Fixing of wiring for lights and fans 1.5 sq mm copper wire complete in all respect.	12	No		

Sl.No.	Items of Work	Qty.	Unit	Rate/Unit Rs. P.	Amount Rs. P.
10	Supplying and Fixing of exhaust fan in toilet/hall 15 1/2 inch dia 1.5 sq mm wiring and modular switches.	2	No		
11	S/F of ceiling fan (1200 dia) with hooks in rooms with adding rod of suitable length wherever necessary including 1.5 sq mm wiring and modular switches and regulator	8	No		
12	S & F of 12 way SPN DB double door with 10No SP MCB and 1 no DPMCB 40 AMP for computer	2	No		
13	Sub main wiring of UPS input and UPS output power supply with 2 no 6 sq mm No. 4 sq mm copper flexible wire in PVC conduit pipe. (payment as/actual length on site)	32	Mtr		

Sl.No.	Items of Work	Qty.	Unit	Rate/Unit Rs. P.	Amount Rs. P.
14	Supply and fixing on board 3 no KIT KAT cut out 200 amp with neutral link on board	1	Job		
15	S/F 63 Amp Changeover	1	No		
16	S/F 63 Amp Main Switch	1	No		
LAN Cabling					
17	Supplying and drawing CAT 6 PVC insulated and Sheathed LAN cable through PVC conduit including testing, commissioning etc.as required.	205	Mtr		
18	Supply and fixing of RJ modem Jack for computer including making connection, soldering etc	10	No		
19	Supply and Fixing of Patch Card with CAT 6 Jack	10	No		
				Total Rs.	

GRAND TOTAL Rs.-----

(Rs. ----- Lacs ----- Thousand ----- Hundred Only.)

Total Work Furnishing Rs.-----+Total Work Electrical Rs.-----

Combined Total Work Furnishing &Electrical Rs----- (----- Lacs ----- Thousand -----

Hundred ----- Only

PROJECT - SPECIFICATION FOR FURNITURE & ELECTRICAL WORKS.

BANK - BARODA U.P. BANK

BRANCH- LAKHANAPAR CHATTI

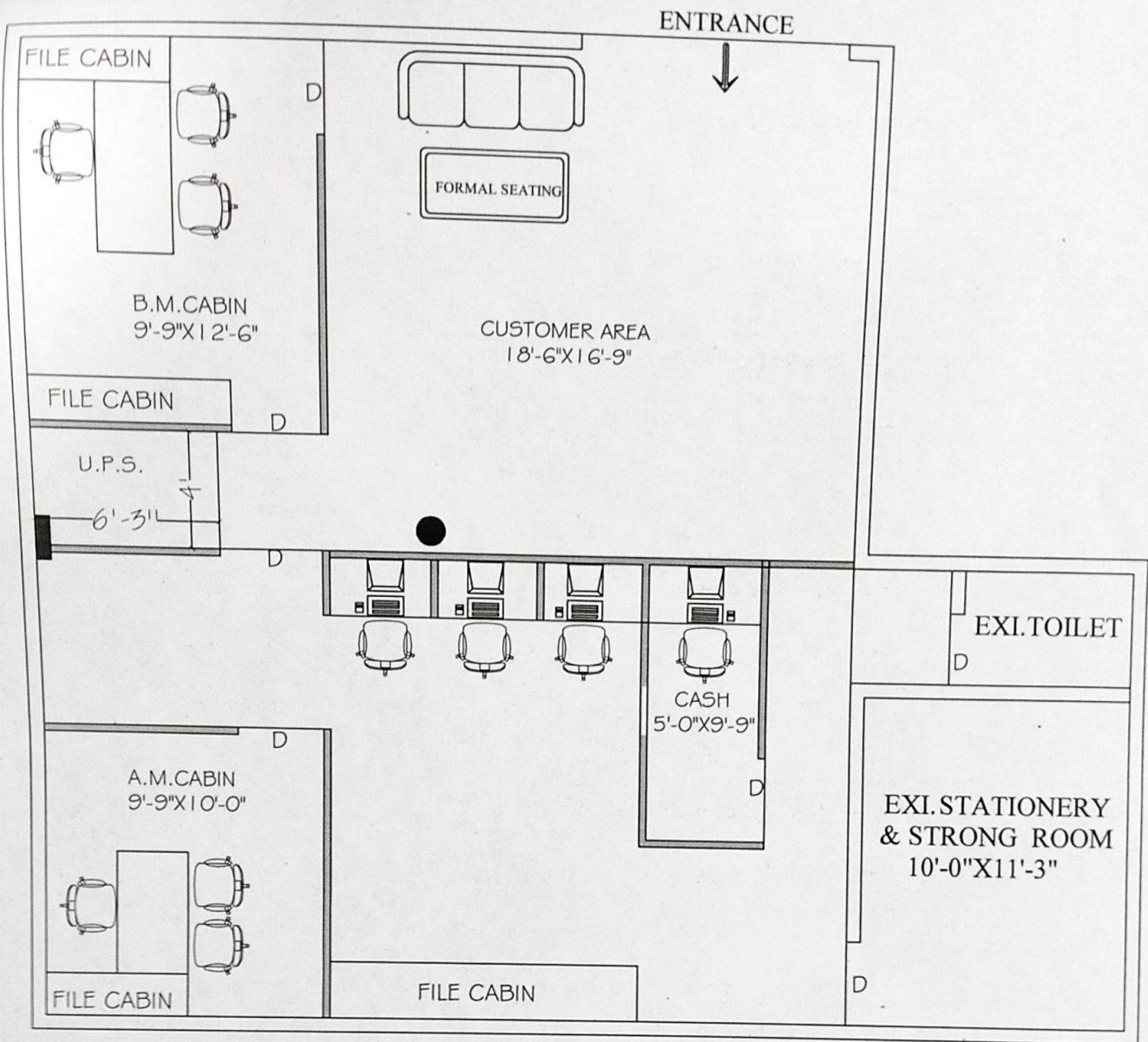
REGIONAL OFFICE- BALLIA-2

***ALL WORKS TO BE DONE AS PER TENDER CONDITIONS.**

A	FURNITURE ITEMS	
1	LAMINATES (IS-2046) / VENEER	GREEN LAM / CENTURY / ARCHID / SAMRAT / FORMICA / SUNDEK OR APPROVED EQUIVALENT
2	COMMERCIAL PLY (IS-303) / WATERPROOF PLY (IS-710) / BLOCK BOARD (IS-1659) / FLUSH DOOR (IS- 2202)	ARCHID/ SAMRAT / CENTURY / EURO / GREEN OR APPROVED EQUIVALENT BY EIC.
3	ADHESIVES	FEVICOL / BLUECOAT/ VAMICOAL
4	LOCKS	GODREJ
	MULTIPURPOSE GROUP LOCK	E-MPL1-22 / E-MPL1C-22 (EBCO)
	NIGHT LATCH	8812 (GODREJ)
	CYLINDRICAL LOCK (SS MATT FINISH)	3792-WITH KEY AND 3786-KEYLESS (GODREJ) / C120SS (EUROPA)
	MORTISE DEAD LOCK (TWO WAY)	8815(GODREJ)
	MORTISE LOCK WITH DOOR HANDLE	MATIZ 8083(GODREJ)
5	DRAWER CHANNELS	GODREJ/ HATTICH/ OZONE
	TELESCOPIC CHANNELS (ZINK PLATED)	STDS35(I)35/ STDS25(I)35/ STDS50(I)35/ STDS60(I)35
	BOTTOM CHANNELS (POWDER COATED)	BMDS 35/ BMDS 37/ BMDS 55/ BMDS 60 (EBCO)
6	GENERAL HARDWARE	SS MATT FINISH
	DOOR STOPPER	I) BLACK/IVORY/BROWN/SILVER COLOR POWDER COATED DS1 (EBCO) II) SPRING TYPE BLACK/BROWN/IVORY COLOR POWDER COATED (FCGL'S STERLING)
	HINGES	I) 3"/4"/5"/6" 1.8MM TH. SS MATT FINISH (SUZU) II) 75X12X19 1.2 MM TH. SS MATT FINISH FOR STORAGE (SUZU) III) AUTO CLOSE HINGES – SLIP ON HINGE- EURO / CLICK ON HINGE-I (EBCO) FOR STORAGE
	HANDLES 'D' OR 'C' TYPE	1) 3"/4"/6"10MM DIA SS 202 MATT FINISH (ANJALI)
	TOWER BOLT	3"/4"/6"/8" BRASS EXTRUDED SS MATT FINISH (OSWAL)

	SLIDING CHANNEL	EBCO MAKE APPROVED BY ARCHITEC/BANK.
7	FLOOR SPRING	
	60 KG	
	80 KG	7477 (GODREJ) / M-74 (HARDWYN)
	100 KG	8293 (GODREJ) / M-74 (HARDWYN)
8	DOOR CLOSER	8294 (GODREJ) / M-76 (HARDWYN)
	60 KG	
		DOUBLE SPEED 8292-SILVER, 7325- GOLDEN (GODREJ) /
	FIRE RATED 60 KG	SCORPIO (HARDWYN)
9	PATCH FITTINGS FOR DOOR AND FIXED GLASS PARTITION (TOP/BOTTOM PATCH, PIVOT, PATCH LOCK, L ARM, L CONNECT, CONNECTOR, FLOOR SPRING, HANDLE, PLASTIC PROFILE)	1938 (GODREJ) / TRITON (HARDWYN)
10	GLASS / MIRRORS	GODREJ / XL C SERIES(DORMA) / OPF SERIES (OZONE) OR APPROVED EQUIVALENT
11	ALUMINUM SECTION	SAINT GOBAIN / MODI
12	WINDOW BLINDS	JINDAL / INDAL / BANCO
13	POLISH / PAINT	VISTA / AEROLUX/HUNTER DUGLUS / MAC
14	PARTICLE BOARDS	ASIAN PAINTS / BERGER / NEROLAC
15	COMPUTER ACCESSORIES	NOVAPAN / DECO BOARD
	CPU HANGER/ SHELF	SIDE MOUNTED IS CPU HL SM (INNOFITT) /CPUSM(EBCO),
	CABLE MANAGER (60MM)	I) METAL - CO60ZN1(EBCO) II) PVC - CO 60 (EBCO) BLACK/IVORY/GREY COLOR
16	ACP PANEL	TIMEX / ALU DECOR / EURO OR APPROVED EQUIVALENT
19	WHITE FILM FOR GLASS	CRYSTAL / SONA MAKE VINYL FROSTED FILM
B	PAINTS	ICI, ASIAN,DULUX, BERGER, NEROLAC, JOHONSON & NICOLSAN
1	ANTI CORROSIVE PAINT	TIKITAR, FINCOAT
2	RED OXIDE	ASIAN, DULUX,NEROLAC
3	POLISH	ASIAN MELAMINE
4	EXTERIOR PAINTS	DULUX WEATHERSHIELD OR APP. EQUIVALENT
5	ENAMEL PAINT	ICI, DULUX, ASIAN, NEROLAC
C	FALSE CEILING	
1	GYPSUM BOARD	GYPROC (SAINT GOBAIN)
2	FRAMING WITH COMPLETE SYSTEM	GYP STEEL ULTRA (SAINT GOBAIN), RAMCO FUJI
3	HILUX BOARDS	RAMCO OR APPROVED EQUIVALENT
4	MINERAL FIBRE TILES CEILING WITH COMPLETE SYSTEM	ARMSTRONG/SAINT GOBAIN/USG

D	APPROVE MAKE LIST FOR ELECTRICAL	
1	PVC rigid conduits & Accessories:	1.5 mm thick (MMS) ISI and FIA approved - Precision / Vraj / Nihir / BLP / PFI / Anchor / Polycab make. (Only white coloured pipes FRLS type to be used.).
2	L.T. Cables:	Havells / KEI / Polycab / R. R. Kable / Finolex.
3	Wires (FRLS):	Havells / KEI / Polycab / R. R. Kable / Finolex.
4	Main Distribution Boards:	MDS Legrand (Lexic) / Hager / Crabtree XPOA / Schneider (Eazy 9) / L & T EXORA / C & S Wintrip / Siemens Bitaguard.
5	ELCB / RCCB / Miniature Circuit Breaker:	MDS Legrand (Lexic) / Hager / Crabtree XPOA / Schneider (Eazy 9) / L & T EXORA / C & S Wintrip / Siemens Bitaguard.
6	Switch gears:	MDS Legrand (Lexic) / Hager / Crabtree XPOA / Schneider (Eazy 9) / L & T EXORA / C & S Wintrip / Siemens Bitaguard.
7	Change Over Switch:	HPL Socomac/ Havells / L & T / Hager.
8	Domestic fittings:	
	a) All Switching Modular Accessories.	MK Wrapped Wround Plus / Schneider Livia / L & T entis / Crabtree Verona / Salzer Elite / Legrand Myris / C & S Divino / SSK Ace.
	b) Holders / ceiling roses	Anchor or equivalent approved make.
	c) Adhesive Tape	Bhor (Steel Grip) or approved .
9	10 - 30 A Polycarbonate Socket & Top:	MDS Legrand (Lexic) / Hager / Crabtree XPOA / Schneider (Eazy 9) / L & T EXORA / C & S Wintrip / Siemens Bitaguard.
10	Telephone Wires / Cable:	Finolex / R. R. Kable / Havells / L & T / Polycab.
11	Telephone tag block:	Krone make.
12	Cable Lugs:	Dowell / Lotus / Jainson / 3 D.
13	Cable gland Single / Double Compression:	HMI / Comet / 3D.
14	Ammeter / Voltmeter:	AE / HPL / MECO / Enercon make.
15	Selector switches:	L & T salzer / Kaycee make.
16	Indicator lamps:	LED type Teknic / Precifine/ Binay.
17	Connector strips:	Wago / Elmex make.
18	Lighting Fixtures :	Wipro / Philips / GE / Crompton. only
19	Exhaust fan (Light duty):	Khaitan / Crompton / Havells.
20	Ceiling Fan (5 star rated):	Crompton (High Breeze Plus) / Havells.
21	Wall mounted Fan (5 star rated):	Crompton (High Flow Wave) / Havells.
22	Data Cable - I / O Unit:	D - Link / Digi Link.



PROPOSED PLAN FOR:-
BARODA UP. BANK,
BRANCH- LAKHANAPAR CHATTI
DISTT.- BALLIA -2

DRW. TITLE :- GROUND FLOOR INTERIOR PLAN



Ar. **RAJESH KUMAR SINGH**
 (B.Arch)

VISION ARCH

Plot no. 166, V.D.A. Colony, Badalapur
 (Chandmari) Varanasi M.No.9450165944

E.MAIL:- **VARCH0036@GMAIL.COM**