

RO/KAND/04/P&E/2023-24/158



बड़ौदा यू.पी. बैंक
Baroda U.P. Bank
Date 05-01-2024

SHORT TERM TENDER NOTICE
(For Empanelled Furnishers & Interior Decorators only)

INTERIOR DECORATION WORK IN DILWAL BRANCH OF
BARODA U.P. BANK

IMPORTANT DATES

DATE OF ISSUE OF TENDER NOTICE	05.01.2024
LAST DATE AND TIME OF SUBMISSION OF TENDER	29.01.2024 up to 05:00 P.M.
DATE OF OPENING OF TENDER (FINANCIAL BID)	30.01.2024 at 03:00 P.M.

Baroda U.P. Bank
Regional office Kanpur Dehat
Nabipur, Jainpur Kanpur Dehat
209311(U.P.)


Chief Manager


Date: 05.01.2025

NOTICE INVITING TENDER

Sealed item rate short term tenders are invited on behalf of the Regional Manager, Baroda U.P. Bank, from the Furnishers & Interior Decorators having valid Empanelment with the Baroda U.P. Bank for the work of INTERIOR DECORATION WORK IN DILWAL BRANCH OF BARODA U.P. BANK, Regional Office Kanpur Dehat.

- | | |
|--|---|
| 1. Issue of tender documents | : 05/01/2024 to 29/01/2024 |
| 2. Last date of receipt of tender documents | : 29/01/2024 up to 5.00 PM |
| 3. Date of opening of tender documents | : 30/01/2024 at 03.00 PM |
| 4. Place of submission & opening of tender | : Baroda U.P. Bank, REGIONAL OFFICE, KANPUR DEHAT |
| 5. Period for completion of work from order date | : Maximum 30 days |
| 6. Retention percentage | : 10% (Ten percent) from final bill |
| 7. Defect liability period | : 12 months from the date of completion certificate issued by the Bank Architect. |
| 8. Release of retention money | : After 14 days from defect liability period. |

SUBMISSION OF TENDER

The tenders are to be submitted in a sealed envelope and clearly superscribed as "Tender for FURNISHING & INTERIOR DECORATION WORK IN DILWAL BRANCH OF BARODA U.P. BANK, REGIONAL OFFICE, KANPUR DEHAT.

- **Bids must be submitted through hand to hand or through registered Post.**
- **The bid must contain two Envelopes as per procedure given below**

FIRST ENVELOPE MUST CONTAIN ALL THE DOCUMENTS GIVEN BELOW:

1. Photo copy of PAN Number duly attested.
 2. Photo copy of GST Number duly attested.
 3. Registration certificate of both work i.e 'furniture & fixture work' and 'Electric & data cabling work
 4. All the documents should be self attested along with stamp of the Firm.
- IT MUST BE MENTIONED ON ENVELOPE "DOCUMENT SUBMITTED FOR BID OF FURNISHING & INTERIOR DECORATION WORK IN DILWAL BRANCH".

SECOND ENVELOPE MUST CONTAIN ALL THE DOCUMENTS GIVEN BELOW:

SECOND ENVELOPE MUST CONTAIN only price bid and nothing else.

- The price must be submitted on the prescribed format
- Price bid will not be accepted on any other format or document.
- It must be clearly mentioned "PRICE BID OF FURNISHING & INTERIOR DECORATION WORK IN DILWAL BRANCH".

BOTH TWO ENVELOPES MUST BE KEPT IN THIRD SEALED ENVELOPE AND SUPERSCRIBED "BID FURNISHING & INTERIOR DECORATION WORK IN DILWAL BRANCH".

GENERAL INSTRUCTIONS TO TENDERERS

Time of Work Completion- One Month (From the date of work order)

1. The work as detailed in this tender shall be executed and completed in all respects within one month in accordance with the Tender Document, Bill of Quantities, Drawings and Instructions, to the satisfaction of the Architects and the Bank. A penalty of 1% per day of total work awarded will be imposed for delay in work completion.
2. The term "Contractor" shall mean the successful tenderer to whom the Contract shall be awarded.
3. The Contractor should quote the rates in figures and words. Any corrections or Over-writing should be initialed by the Contractor.
4. The Contractor should submit the tenders with seal, signature and date on each Page.
5. The Contractors should submit the cost of the main items as per tender specifications. Further modification after awarding of the contract shall be not allowed unless there is specific instruction

- by the Bank/Architect to change specifications.
6. The contract is time-bound and the works are to be completed within the time limit specified in the notice inviting tenders. This is a working office and the contractor has to work with no or minimum obstruction to its regular services.
 7. The decision of Employer and the Architect is final and binding.
 8. The contractor must submit registration certificate of both work i.e 'furniture & fixture work' and 'Electric & data cabling work' in separates envelope must be mention "Technical Bid for furnishing & electrical work".
 9. The contractor must submit the tender for both work i.e 'furniture & fixture work' and 'Electric & data cabling work', Partially filled tender will be rejected.
 10. For Electrical fixtures and light points required as per drawings the contractor has to draw the wires from the existing positions of light points, power points wherever and if applicable. The contractor shall submit the certificate from electrical contractor holding required license/certification from directorate of electrical safety (U.P.)/competent authority of any other State.

TERMS & CONDITIONS

1. Unless otherwise mentioned, all works are with no allowance for Lapse waste. Unless otherwise described or measured separately, price for all the items shall include all necessary straight & curved edges.
2. Any damage to the work before the site is handed over, is to be replaced or made good at the expense of the contractor to the entire satisfaction of the Architect/Bank.
3. Income Tax, Other Tax as applicable shall be deducted at source as per the Income Tax Act / Rules.
4. The quantities indicated are subject to change. The payment of the bill shall be made as per the actual measurement as certified by the architect but not exceeding the total value quoted in the tender form.
5. The Architect or any officer of the Employers will be free to inspect the work at the site during the period of execution. Any suggestion of change or modification to improve the quality of work will be carried out subject to prior approval of the competent authority of the employers and that of the Architect.
6. Incase of failure to take up the work even after accepting the work order, or leaving the work incomplete, or for defective work not rectified, or violation of the terms and conditions, the contractor will be de-panelled/blacklisted.
7. For any item of work not covered or any unforeseen items of work, payment will be made according to the rates approved for similar nature of work, the costing done by the Architect, as per current PWD schedule of rates, or as per analysis of material cost, labour rate and profit to the Contractor at 10%. The Contractor must obtain prior approval in writing before undertaking such additional works.

8. The tenderers shall sign each & every page of the tender documents including the drawings attached here to.
9. The amount is to be quoted in figures as well as in words. In case the rates quoted in words and in figures are in variance, the amount written in words shall be taken as final.
10. The Contractor shall make their own arrangement at their own cost for storing materials, plants, tools etc. The employers will not be liable for security of the Contractor's materials.
11. No tools or plants will be issued by the bank.
12. The Employer / Architect reserves the right to accept or reject any tender without assigning any reason whatsoever and the said decision shall be final and binding upon the tenderer.
13. In case of breach of contract by the Contractor for slow progress of works or any other claim of damage, the Employer or the Architect may have the power to rescind the contract without furnishing further reasons thereof.
14. The Architect shall have the power to ask the contractor to furnish the sample/ color / test certificate from any Govt. /Authorized agent for any materials used/ to be used in the Works, the expenditure of which is to be borne by the Contractor.
15. The Employer shall be not be liable for any damages or compensation payable as a consequence of any accident or injury to any workman or other persons in the employment of the Contractor or any sub-contractor.
16. On completion of the Works, all rubbish, debris, materials, tools, Laborers, etc. to be removed by the contractor from the site and the contractor will hand over the site clean & clear & in usable condition within 3 days of completion of the works. Failing this, the employer may
17. Dispose the materials at the cost of the contractor.
18. In case of any dispute, the matter will be referred to the Regional Manager, Baroda U.P. Bank, Regional Office Kanpur Dehat (UP).
19. Final Payment after completion of Project will be done with the certificate of Architect with deduction of retention money by the Bank.
20. The rates quoted in the tender shall exclude GST but include all excise tax, No escalation of rates will be allowed under any circumstances.

ESTIMATE FOR ELECTRICAL WORKS					
FOR BARODA U.P.BANK, BRANCH AT DILWAL, RO KANPUR DEHAT					
S.NO.	PARTICULARS	Unit	Qty	Rate	Amount
	A - Light, Fan, 16A & 6A points - All switch & sockets shall be modular type complete with cover plate & GI/ MS box.				
1	L&F Points+ Power points				
1	Point Wiring for light, fan & exhaust fan points controlled thru modular switches complete with boxes & cover plate - The point wiring shall be carried with 3*1.5sq mm FRLSH stranded Cu. Wires in 20mm PVC conduit pipe. The job also include circuit wiring with 3*1.5sq mm FRLSH Cu stranded wires in 20mm OD PVC conduit from nearest TPN/ SPN Db to SDb. The conduit pipe shall be concealed in wall/ floor/ panelling/ partitions or above false ceiling as per requirement. The job shall be complete & to the entire satisfaction of the Bank. Each Switch board should be provided with suitable capacity fuses/ fuse indicator	Point	35		
	PVC Insulated FRLSH Copper wire (ISI Marked)- Skyline/ Finolex/ Havells/ Polycab				
	PVC Conduit- CAP/ BEC/ Sieko/ AKG				
	Modular Switch/ Sockets - ABB/ Legrand/ MK/ Anchor/ Elleys/ Roma				
2	6 A switch socket points on Sdb: S/F of 6A switch points with an additional indicator and 6Amp. modular Type switch & socket. It shall have 3*1.5sq.mm FRLSH stranded Cu. Wire as per requirement. The job shall be complete & to the entire satisfaction of the Bank	Point	4		
	PVC Insulated FRLSH Copper wire (ISI Marked)- Skyline/ Finolex/ Havells/ Polycab				
	Modular Switch/ Sockets - ABB/ Legrand/ MK/ Anchor/ Elleys/ Roma				
3	Power Point: Raw power points on workstations / table / Printer etc with 3*2.5 Sq mm FRLSH Cu. stranded wire laid in 20mm OD PVC pipe medium conduit pipe laid & concealed in wall/ floor/ panelling/ partitions or above false ceiling as per requirement. Each power point shall also consists of 1 nos of 16A , 2/3/5 pin sockets & 1 No., 16A Switch , wired together forming one point. The earth wire of green color only.	Point	6		
	PVC Insulated FRLSH Copper wire (ISI Marked)- Skyline/ Finolex/ Havells/ Polycab				
	PVC Conduit- CAP/ BEC/ Sieko/ AKG				
	Modular Switch/ Sockets - ABB/ Legrand/ MK/ Anchor/ Elleys/ Roma				
2	UPS				
	Assumed 2nos. of 3KVA UPS with 1P input & 1P output (1working + 1Sb)				
	The work shall also include cutting chase for conduits in the wall/ floor (Without damaging the building/wall) along with clamping the conduit at every 750mm interval & finally finishing the surface & matching the same with the existing surface. (Item 6, 7 & 8)				
1	<u>UPS supply regulating Changeover:</u> S/F of 32A 4P changeover near Main Db for regulating UPS supply including proper connections. The incoming supply shall be tapped from 32A, 3P MCB in main Db/ panel. <u>When branch is closed this change over shall always remain in "ON" position. It will enable supply to UPS even when branch is closed in evening.</u> Changeover Switch- C&S/ Havells/ L&T/ HPL	Each			
2	S/ F of 4way SPN Db metallic c/w 32A 4P MCB including all connections complete in all respects to the entire satisfaction of the Architect/ bank. Distribution Boards Double door in steel sheet housing - ABB/ MDS/ Lexic/ Siemens/ HPL MCB- 10kA "C" Characteristics L&T/ Siemens/ Schneider/ Legrand	Each	1		
3	Incoming supply to UPS room: S/laying of 4 core 4sq.mm XLPE insulated armoured Copper conductor cable from main Panel to 4way TPN Db in the UPS room to be laid in medium duty 20mm PVC conduit/ pipe & run on surface or concealed in wall/ floor/ false ceiling including connections at both ends with lugs. Cables Armoured/ Unarmoured - Finolex/ Polycab/ Havells/ RR Kabel/ KEI	m	20		
4	S/ F of 2way SPN Db c/w 32A 2P for regulating UPS input supply complete in all respects to the entire satisfaction of the Architect/ bank. Distribution Boards Double door in steel sheet housing - ABB/ MDS/ Lexic/ Siemens/ HPL MCB- 10kA "C" Characteristics L&T/ Siemens/ Schneider/ Legrand	Each	2		
5	Supply & laying of incoming & outgoing wiring to & from UPS with 3*4 sq mm FRLSH stranded Cu. Wires laid in 20/25 mm flexible PVC pipe medium duty to UPS incoming & from UPS outgoing. PVC Insulated FRLSH Copper wire (ISI Marked)- Skyline/ Finolex/ Havells/ Polycab PVC Conduit- CAP/ BEC/ Sieko/ AKG	m	10		
6	UPS Output Distribution Boards Location on RHS wall opposite pillar behind officer on counter - S/ F of 12way SPN Db c/w 32A 2P MCB and 3nos. 6A 1P (1 for cash + 2 for router) + 2*16A 1P (2BM+ 1for 4 officers on counters) MCB's complete in all respect and as required & to the satisfaction of the bank.	Set	1		

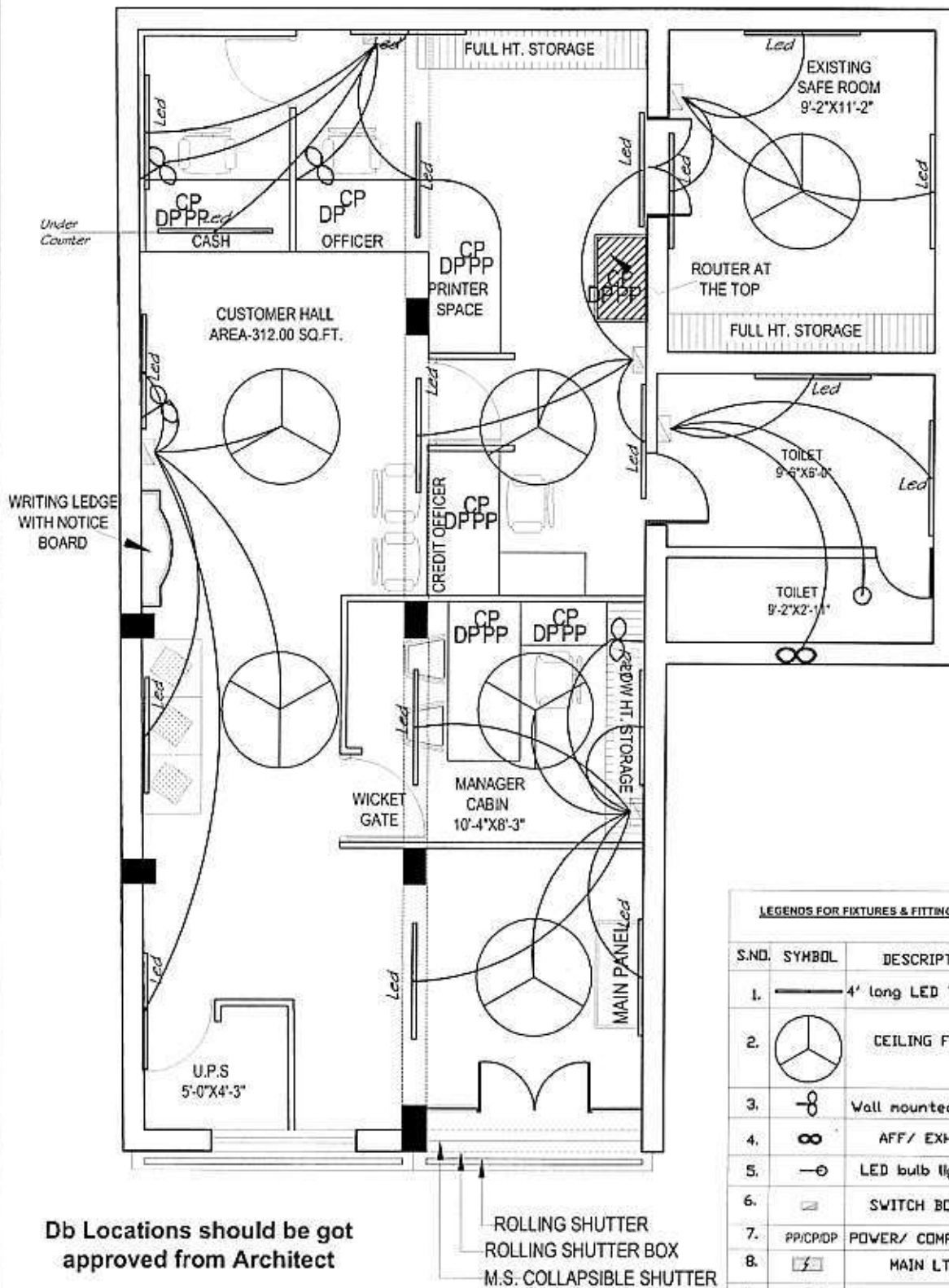
	Distribution Boards Double door in steel sheet housing - ABB/ MDS/ Lexic/ Siemens/ HPL				
	MCB- 10kA "C" Characteristics L&T/ Siemens/ Schneider/ Legrand				
7	Input Wiring for UPS Db from UPS room with 2*4.0+1*1.5 sq.mm FRLSH stranded Cu. wires laid in 20mm OD PVC pipe medium duty conduit pipe laid & concealed in wall/ floor/ panelling/ partitions or above false ceiling as per requirement. The rate should include the cost of all materials, labour, T&P, taxes & levies, scaffolding, shifting of furniture, carting away the debris and cleaning the floor etc. The job shall be complete & to the entire satisfaction of the Bank.	m	12		
	PVC Insulated FRLSH Copper wire (ISI Marked)- Skyline/ Finolex/ Havells/ Polycab				
	PVC Conduit- CAP/ BEC/ Sieka/ AKG				
8	Point wiring for UPS points on workstations / table for computers using 3*1.5 Sq. mm FRLSH Cu. stranded wire laid in 20mm OD PVC pipe medium conduit pipe laid & concealed in wall/ floor/ panelling/ partitions or above false ceiling as per requirement. Each point shall consist of 3 nos of 6A, 2/3 pin sockets & 1 No., 10A Switch, wired together forming one point. The earth wire of green color only	Each	7		
	PVC Insulated FRLSH Copper wire (ISI Marked)- Skyline/ Finolex/ Havells/ Polycab				
	PVC Conduit- CAP/ BEC/ Sieka/ AKG				
	Modular Switch/ Sockets - ABB/ Legrand/ MK/ Anchor/ Elleys/ Roma				
3	Distribution Mains				
1	S/F of 3no 63A 415V Kit kats rewirable Porcelain fuse carrier & base c/w 4hole heavy duty terminals with shroud & cover including making of connection from electronic meter c/w wooden board etc.	Set	1		
LOM	SFU/ Fuses- HPL/ L&T/ Siemens/ GE Power/ Schneider (MG)				
2	ELECTRICAL PANEL/ Main controlling Db	No.	1		
	SITC of 4way Vertical TPN DB complete with 100A 4P MCCB as Incomer, 63A 3P MCB - 2Nos (1 HTPN+ 1UPS) and 25A 1P MCB- 3 Nos (1 Signage + 1 strong room + 1 spare) complete in all respects as required. The job shall be completed, to the satisfaction of the Bank Engineer/Architect.				
LOM	Distribution Board single/ double door in steel sheet housing - ABB/ MDS/ Lexic/ Siemens/ HPL				
	MCCB- Legrand/ Schneider (MG)/ ABB/ Siemens/ L & T				
	MCB- 10kA "C" Characteristics L&T/ Siemens/ Schneider/ Legrand				
3	<u>Changeover</u> , S/F of 63A 4P changeover near Main Db for regulating DG supply including proper connections.	Each	1		
LOM	Changeover Switch- C&S/ Havells/ L&T/ HPL				
4	Sl laying of XLPE insulated armoured Copper Conductor cables including cost of lugs, cable glands etc. The cable should be laid on surface with proper clamps @750mm or laid & concealed in wall/ floor/ PVC Conduit/ false ceiling complete in all respect. The work also includes cutting chases for conduits in the wall/ floor (Without damaging the building) along with clamping the cable. All connection shall be done thru proper size of lugs				
	4c 10sq mm for Pole & fuse Kit Kats	m	25		
	4c 6sq mm from Main panel to HTPN Db	m	20		
LOM	Cables Armoured/ Unarmoured - Finolex/ Polycab/ Havells/ RR Kabel/ KEI				
	Cable Lugs- Dowells				
5	Strong room controlling DP MCB - Circuit wiring with 3*1.5sq.mm FRLSH Cu stranded wires to be laid in 20 mm OD PVC medium duty laid & concealed in wall/ floor/ panelling/ partitions or above false ceiling as per requirement. The job also includes supply & fixing of 32A 2P MCB in 2way metallic box including connections with lugs. The job shall be complete & to the entire satisfaction of the Bank.	Job	1		
	PVC Insulated FRLSH Copper wire (ISI Marked)- Skyline/ Finolex/ Havells/ Polycab				
	PVC Conduit- CAP/ BEC/ Sieka/ AKG				
	MCB 10kA "C" Characteristics L&T/ Siemens/ Schneider/ Legrand				
5	DG Set Supply				
	Slaying of 4c 10sq mm XLPE insulated Armoured Al. conductor cable c/w 1*6 sq mm FRLSH Cu Stranded wire (earthwire) from proposed DG set to Changeover switch including its connections at both ends with lugs duly clamped with saddles @600mm with MS clamps (Made from 25x3mm MS flat) duly screwed with 32x8mm screws complete in all respect or if required buried in ground as per site conditions	m	20		
LOM	Cables Armoured/ Unarmoured - Finolex/ Polycab/ Havells/ RR Kabel/ KEI				
	Cable Lugs- Dowells				
5	Earthing				

1	Panel: S/burying of Dual pipe technology (Pipe in Pipe) earthing electrode having GI 80mm O/D pipe with 25 micron coating, 3metres long. The job also includes S/F of GI strip clamp with two holes (with SS/GI bolts & nuts) on the electrode & taking one lead of 4sq.mm Cu Stranded wire upto Main panel complete in all respects with guaranteed E/N voltage of less than 2 volts and resistance less than 1 ohms. The 4sq.mm Cu stranded wire shall be terminated on the earth bolt in panel. The distance between two earthing pits to be 10ft or more.	Job	1		
2	UPS: S/burying of Dual pipe technology (Pipe in Pipe) earthing electrode having GI 80mm O/D pipe with 25 micron coating, 3metres long. The job also includes S/F of GI strip clamp with two holes (with SS/GI bolts & nuts) on the electrode & taking one lead of 4sq.mm Cu Stranded wire upto 6way earlink in UPS room. complete in all respects with guaranteed E/N voltage of less than 2 volts and resistance less than 1 ohms. The 4sq.mm Cu stranded wire shall be terminated on a separate 6way earlink. The connections for UPS earthing shall be taken from this earlink. The distance between two earthing pits to be 10ft or more.	Job	1		
3	Supply & Fixing of 4sq.mm FRLSH Cu. Stranded wire on surface or in recess for loop earthing as required earthing to DB's or main panel as required.	m	40		
	PVC Insulated FRLSH Copper wire (ISI Marked)- Skyline/ Finolex/ Havells/ Polycab				
4	S/F of GI Strip 32x6mm earth clamp 200mm long c/w 6holes duly tapped	Each	2		
7	SUPPLY & FIXING LIGHT & FAN ITEMS				
1	S/F of Surface & wall mounted LED batten - Ultra-slim poly carbonate decorative LED batten with inbuilt heat sink, anti glare polycarbonate diffuser & energy efficient electronic driver 20W 1800 lumens - Make as approved by Bank/ architect	Each	20		
	Light fittings - Philips/ Wipro/ Osram/ Havells/ Crompton Greaves				
3	Angle holder complete in all respect with 6w LED lamp (for Toilet area)	Each	2		
	LED Bulb - Philips/ Wipro/ Osram/ Havells/ Crompton Greaves/ Syska				
	Angle holder - Legrand/ MK/ Anchor/ Elleys/ Roma				
4	S/F of Plastic body wall mounted fan 450mm sweep - Make as approved by Bank/ architect	Each	6		
	Fans- Crompton/ Havells/ Bajaj/ Usha				
5	S/F of energy saving/ efficient ceiling fan 1200mm sweep double ball bearing type c/w Electronic modular regulator- Make as approved by Bank/ architect	Each	6		
	Fans- Crompton/ Havells/ Bajaj/ Usha				
6	Supply & Fixing of metallic fresh air fan 230mm sweep - Make as approved by Bank/ architect	Each	2		
	Fans- Crompton/ Havells/ Bajaj/ Usha				
8	Data Cabling				
1	Supply & laying of 25mm OD medium duty PVC conduit c/w junction box, circular box, elbows, bends & other accessories as required by chase cutting on wall, through partition or over false ceiling. The work includes making good all damages to original finish, painting etc. as required	m	40		
	PVC Conduit- CAPI/ BEC/ Sieko/ AKG				
2	Supply & laying of CAT - 6e cables Giga speed thru pre-laid PVC conduit as directed by the consultant from Server to Switch, Switch to computer data socket including interconnections as required complete in all respects.	m	85		
	Cable - Digi Link/ Clipser/ National/ Polycab/ Lapp/ Finolex				
3	Supply & Fixing of XL RJ 45 toolless information outlet Grey colour cat 6e Giga speed including interconnection with connectors (cost to be borne by contractor) as required complete in all respects.	Each	8		
	I/O- DigiLink/ Tyco (AMP)/ Schneider/ D- Link				
4	Supply & fixing of 7ft Grey colour Patch chord Giga speed Systemax/ D link make	Each	8		
	Patch Chord- DigiLink/ Tyco (AMP)/ Schneider/ D- Link				
5	Supply & fixing of 3ft Grey colour Patch chord Giga speed Systemax/ D link make	Each	8		
	Patch Chord- DigiLink/ Tyco (AMP)/ Schneider/ D- Link				
6	Dismantling & refixing of existing Rack, Patch Panel & Switch from the existing branch to the new proposed location.	Each	1		
	TOTAL COST OF ELECTRICAL WORKS				
Note: All rates are excluding G.S.T					

Estimate for Furnishing works for Baroda U.P. Bank					
Branch - Dilwal					
Region - Kanpur Dehat					
1.No offsite prefabrication shall be allowed in any case. All fabrication shall be done at the site after getting the materials inspected by the architect					
2.No payment shall be made for any in completed or unsatisfactory work					
3.The Contractor should strictly follow the Booklet requirements of the Bank					
including the detailed drawings in the booklet. Any discrepancy between the booklet and the Specifications below should be brought to the notice of					
4. List of material to be strictly as per the booklet.					
5. Cable Managers to be provided in the tables and Counters wherever required.					
6. All underframe should be properly treated with antitermite and waterproofing material					
7. All Locks in the drawers and doorsetc. should be of Godrej					
8. All keyboard Trays and Drawers to be on Channel Sliding Mechanism.					
*The contractor to follow the banks colour Coding. Any other specified colour to be superceded by the Banks Colour code.					
*All board to be BWP. Of approved brand and if written BWR it should be superceded by BWP board/ply.					
S.No.	Description of item	Unit	Qty.	Rate	Amount
1	Dismantling of Existing Furnitures Works etc.	Job	1.00		
	Dismantling and demolishing of the existing Furnitures etc complete in all respects. and disposal of refuse.				
2	Main Door Powder Coated Aluminum with fixed window glazing Powder Coated.	Sq.ft.	75.00		
	P/F aluminium entrance door with powder coating as per bank colour code. section 2mm thick glazed aluminium door, 3.75" x 2" Al. section including locks floor spring tower bolt, mortice locks, floor spring of hemco/ everite etc. as per design and as per direction of the Architect. All sections to be of hindalco/ indal along with SS C-shaped handles of kitch or equivalent make along with, mortice locks floor spring of hemco/ everite make. The item also includes door lock completed to the satisfaction of the architect. The Glazing to be 8 mm thick glass with etching as per design. This also includes the fixed glazing on both the sides of the entrance door (Ultra Shutter Lock No1920(MS)/5478 (SS)). (INCLUDE ENTRANCE DOOR TOP TO BE BLOCKED BY 6 MM PLY AND IT IS NOT INCLUDE THE MEASUREMENT)				
3	Branch Manager Table with Side Table.	NOS.	1.00		
	Size-5'-6" X 2'-6" X 2'-6"				
	Side Table-3'-0" X 2'-6" X 1'-6"				
	Ply Wood-19.0mm thick BWP				
	Supports-2" X 2" & 2" X 1.5" CP Teak Wood and beading Patti				
	Drawer-1'-6" wide two drawers and one shutter below the drawers at left side of the table and two drawers at side table and below two shutters				
	Laminate-1.0mm thick approved colour				
	Key Board Tray-Metal INNOFIT make				
	CPU Metal Stand, Twin Telescopic Drawer Fittings, Brass Powder Coated Wire Manager				
	Foot Rest-12.0mm thick BWP				
	Handle-Brush finish stainless steel, Brass Ball Catches 12.0 thick plain glass with edge polish at top of the table (Other Exposed Edge of Ply with half round beading with approved colour polish)				
4	Credit Officer Table with side table with 12 mm thick bevelled glass on top.	No	1.00		
	Size-5'-0" X 2'-6" X 2'-6"				
	Other specifications as above 1				
5	Low Height Partition	Sq.ft.	250.00		

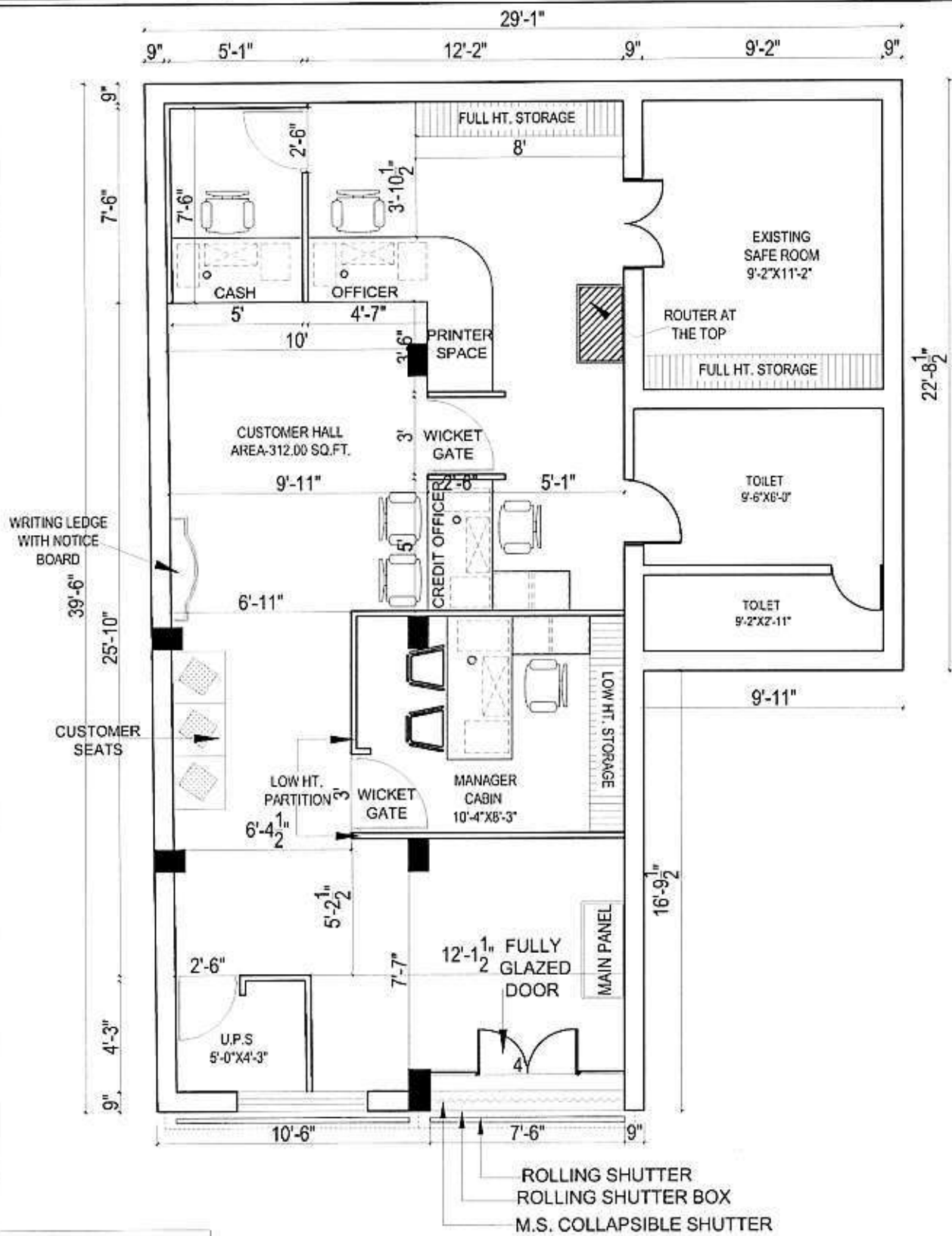
	Half Height partition to be made with Anodized Aluminium frame work, heavy sections (2mm thickness) of 2"x1.5" sections, spacing of 2'0"x2'0" on bothsides and covered with 9mm thick BWP plywood finished with 1mm thick laminate of approved colours for skirting & borders and white colour laminates for base on both sides with all necessary fixing accessories, arrangements and etc. Partition shall have 12mm thick etched glass and fixed with teak wood beading with melamine polish. Clear glass shall be finished with frosted film sticking over the glass of approved pattern and design. The height of the glass should be from 3'-0" to 4'-6". Rate to include providing cutouts and provisions to run electrical conduits, switches, etc. Cost include wastages, transports, loading, unloading charges, labours, materials, tools, lead, lift and etc. Complete as per drawings and instructions of the Architect.				
6	Cash Cabin Partition	Sq.ft.	162.00		
	Providing and fixing of Cash Enclosures at height of 7'-0" with Anodized aluminium frame work, heavy sections (2mm thickness) of 2"x1.5", spacing of 2'0"x2'0" on bothsides and covered 6mm thick BWP plywood finished with 1mm thick laminate of approved colour. Partition shall have provision for opening and 19mm BWP plywood tray for challan receiving purpose. Cost include aluminium grill and fixed with teak wood beading and duco paint. Cost also include 3 Nos of Solid core flush Doors with sizes of 2'-6"x7'-0", fixed in the partition. Door shall have teak wood beading and lipping with duco paint. Door finished with 1mm thick laminate of approved colour for skirting of approved pattern. Door shall have 8mm glass fixed with teak wood beading and duco paint. Rate to include hardware's like brass hinges, godrej three nos of night latch, door closure, door stopper and handles. Cost also include cash transaction opening shall be provided with door arrangements made with BWP plywood frame work finished by laminate, duco paint and locking system. Cost include wastages, transports, loading, unloading charges, labours, materials, tools, lead, lift and etc. Complete as per drawings and instructions of the Architect.				
	Decorative Grill (12mm thk)-hexagonal opening as per instruction of Bank's Engineer/Architect.) All exposed edges of Plywood shall be fixed with 1/8" C.P. Teak Lipping.				
7	Cash Counter	Rft.	5.50		
	A. Cash counters as per the drawing				
	Providing and fixing into position Cash counters as per detailed drawing made of Phenol bonded 19mm thick BWP commercial board finished with 1.0mm thick BWP laminate on top, front and sides as per detailed drawing. The front member of the cash counter to continue to 3'-8" height. At 3'-8" m height a projection of 15cm extended towards the customers side while a projection of 25.5 cm will be extended towards the staff. The outward projection to be made of 19mm thick phenol bonded commercial board finished with 1mm thick laminate top. The counter to have one drawer unit of 3 drawers & space for CPU. 2 drawers to have division for cash as banks specifications. The exposed edges to have TW beading as in the design.				
	The item included all hardware such as channels of glydo/hettich / flyrail, self closing hinges/ locks/ handles/ laminated keyboard tray, Other hardware etc. The exposed surfaces to be finished with 1mm thick laminate of approved shade. Provision of footrest to be made as specified. All exposed wooden surfaces to be finished with clear melamine polish as approved by the Architect. All unexposed surfaces to have synthetic enamel paint with primer, all complete as per detailed drawings and direction of the Architect. The counter to have provision for cable manager and keeping mouse.				

8	Front Counter	Rft.	16.00		
	A. Running counter as per the drawing				
	Providing & Fixing clerical counter made out of 19.0mm thick ply (as per list of materials and Drawing) frame work for top, verticals, shelves, apron, sides, drawer unit, shutters, side units, customer top, foot rest, 12.0 mm thick ply (as per list of materials for drawer sides, sliding shutters, front apron & 6mm thick ply for side unit back, drawer bottom, drawer unit back along with necessary 2" X 2" or 2" X 1.5" of laminate matching imported wood moulding & teak wood supports for fixing of top. The clerical counter shall have 2'-6" in depth & counter shall have two tops i.e. one at 2'-6" for writing and second at 3'-0" for customer in height finish in approved make/color black granite of top on the counter. complete. The clerical counter shall have 1 No. of key board tray, 2 Nos. of equal drawers or as per the Bank requirements & one open able shutter. All exposed surfaces i.e. apron, counter side etc. finish with approved make/color 1.00mm thick laminate & moulding finish with 3 coats of melamine polish and internal surfaces shall have zinc oxide polish along with necessary approved Stainless Steel				
	Hinges, Ball Catches, Stainless Steel Locks, approved design Stainless Steel Handles, Stainless Steel Powder Coated Grommet (wire manager) Wood Foot Rest (Movable) Earl-Bihari make Twin Telescopic Channel, CPU Hanger/Trolley INNOFIT make etc. complete as per detail drawing and Instructions of the Bank's Engineer/ Architect				
	this item shall have hinges floor springs/sliding arrangement/hydraulic door closer, mortise locks (Godrej make all), etc. The rate shall include cost of all materials, labour, T&P, wastages, etc. required for proper completion of work, all complete to the satisfaction of the Architect.				
9	Cash Cabin-Aluminium Grill Top with teak Decorative Grill Partition).	SQFT	44.00		
	On cash cabin top				
	Providing and fixing of aluminium grill with square size 75mm x 75mm - 8mm, on top of the cash cabins etc. The grill shall be tightly stretched and nailed to a wooden frame work, made out of 50mm x 40mm teak/ hard wood (with anti-termite) members at 750mm c/c approx. both ways or as per site conditions. The erection of framework shall include for expansion bolts cleats, clamps bolts, nuts, screws, rivets and other accessories. All teak wood surfaces shall be painted with two coats of synthetic enamel over one coat of primer. The rate shall include cost of all materials, labour, T&P, wastages, etc. required for proper completion of work, all complete to the satisfaction of the Architect.				
10	12mm Glass on Front Counter & Cash Counter	Sq.ft.	40.00		
	12 MM float glass with rounded edges with etching as per the requirement of bank for Front counter (Height: 60 cms) (With teak wood frame 70 cm).				
11	Storage (Low Height)	Sq.ft.	185.00		
	Size-2'-6" highX 1'-6"deep				
	Ply Wood-19.0mm thick board for side top and door & back 6.0mm IS 303 with shutters, shelf 19.0mm ply				
	Shelf-19.0mm thick BWP				
	Handle-Brush finish stainless steel				
	Lock-Vijayan/Godrej				
	Internal surface zinc oxide polish and other required accessories instructed by Bank's Engineer/Architect.				
12	Column / Wall Panelling /Meter Boxing	Sq.ft.	185.00		



LEGENDS FOR FIXTURES & FITTINGS WITH QUNATITY

S.NO.	SYMBOL	DESCRIPTION	HT.
1.	—	4' long LED TUBE LIGHT	8'-0"
2.		CEILING FAN	
3.		Wall mounted Fan	6'-6"
4.		AFF/ EXHAUST	8'-6"
5.		LED bulb light holder	8'-6"
6.		SWITCH BOARD	4'-6"
7.	PP/CP/DP	POWER/ COMPUTER/ DATA	1'-0"
8.		MAIN LT PANEL	
9.		TPN Db	6'-0"
10.		SPN Db	6'-0"



ALTERNATIVE-1

	Column Panelling 8'-6" only considered with Anodized Aluminium frame work, heavy sections (2mm thickness) of 2"x1.5", spacing of 2'0"x2'0" on bothsides and covered with 9mm thick BWP plywood finished with 1mm thick laminate colours for skirting & borders,.Rate to include providing cutouts and provisions to run electrical conduits, switches, etc. Cost include necessary hardwares like clamps, screws and etc. Cost include provisions for electrical db closing 19mm BWP plywood door arrangements,wastages, transports, loading, unloading charges, labours, materials, tools, lead, lift and etc. Complete as per drawings and instructions of the Architect.				
13	Notice Baord	No.	1.00		
	Notice Board made of 19.00 mm board (size: 3'-0"x3'-0") laminated sides andcovered by good quality Cherry Colour Velvet with attached Cheque Writing Desk (6"x6"x9") with attached Two Battens for Support, Sunmica Pasted on all sides.				
14	Writing Desk Including Suggestion Box and Cheque Drop Box	No.	1.00		
	Writing ledge of 19 mm Phenol bonded board as/design on 19 mm thick with pockets for slips of 6mm glass machine polished with seperators completed to the satisfaction of the architect and the Drawing. The Writing ledge includes a Suggestion box below, cheque drop box and a notice board above complete to the satisfaction of the Architect.				
15	Hydraulic Door Closure. (to be Godrej)	No.	1.00		
	Providing and fixing of hydraulic door closure (Make-Godrej, Product Code-4539 or equivalent) for doors. It shall incorporate the following–				
-	Body manufactured from Aluminium extruded alloy machined to extreme accuracy.				
-	Rack and Pinion-made of machined alloy steel duly heat-treated.				
-	Adjustable closing speed.				
-	Suitable for right hand and left hand opening doors.				
-	Suitable for door / frame mounting.				
-	Suitable for door weight up to 60 kgs.				
-	Suitable for 180 / 100 degree door opening.				
-	All complete to the satisfaction of the Architect.				
	Total				
Note: All rates are excluding G.S.T.					