

PROJECT - TENDER FOR ELECTRICAL/DATA CABLING WORKS.				
BANK - Baroda U.P. Bank				
BRANCH -Lewa Road				
REGIONAL OFFICE- Chandauli				
*ALL WORKS TO BE DONE AS PER TENDER CONDITIONS.				
DESCRIPTION OF ITEM	QTY	UNIT	RATE (Rs.)	AMOUNT (Rs.)
Installation of 200Amp Kit kat Fuse unit 3 nos with 200 Amp neutral link on wooden board (3' x 3') complete with connections (new).	1	Set		
<b>ELECTRICAL PANEL</b> Design, manufacture, providing, storing & installing in position, effecting proper connection, testing and commissioning of panel made of 14 SWG, CRCA sheet steel. It shall be dust and vermin proof. It shall have compartmentalized construction with bus bar chambers, cable alley, cable glands plate etc. as required, duly painted from inside as well outside. It shall have the following - MAIN PANEL. 1 No. 100 Amp. TPN, MCCB (18 KA breaking capacity), Busbars. 100 Amp., 3 phase, 4 strips, 415 volts, 50 Hz. copper busbars with colour coded PVC heat shrinkable sleeves. Instruments. Multi function Meter for Voltage, Ampere, Power factor, KWH, Data 1 No. with CT 75/5 Outgoing. 5 Nos. 63 Amp. TP, MCB (For LDB, PDB, Branch UPS DB, ATM UPS DB and Spare Feeder) 10 AMP DP MCB. 2 Nos (for Glow Sign board, and spare feeder) 1 No., 100 Amp. Four Pole Change Over for D.G. Set. (Seperate from the panel) The design of panel should be got approved by the Architect before manufacturing. The job shall be completed, to the satisfaction of the Bank Engineer/Architect.	1	Nos.		
<b>UPS I/P, O/P AND DISTRIBUTION</b>				
20/32 AMP industrial socket along with MCB for UPS I/P and O/P	2	Nos.		
12 way SPN db double door (1Nos 32A DPMCB and 10 Nos. 6 to 16A SPMCB ) UPS Power Branch .	1	No.		
SITC of 63 Amp TPN MCB in Encloser complete in all respects as required. ( UPS)	1	No.		
SITC of 63Amp Rotary Phase selector switch complete with RYB indication lifht in incloser complete in all respects as required.	1	Nos.		
<b>RAW POWER &amp; FAN, LIGHTING DB &amp; AC DISTRIBUTION BOARD</b>				



4 WAY TPN DB Double Door (1 No. 63 AMP TP MCB and 12 Nos. 6-32 AMP. SPMCB) (For AC, Light system, Power Points) all complete with blanking plates	2	Nos.		
<b>CABLES</b>				
3.5 Core 35.0 Sq.mm Aluminium Armoured Cable (Electric Meter to Electric Panel)	15	Mtr.		
4 X 6.0 Sq.mm Copper Wire + 1X 4.0 Sqmm copper earth wire in PVC Pipe fixing on walls or chassing the walls and making it good with cement mortar of 1:5 ratio including Connecting ,testing etc. compete (Panel to UPS Incomer, LDP, PDB and ATM UPS Incomer).	14	Mtr.		
Same as above but 4 x 10.00 Sqmm Copper Counductor Cable. (Kit Kat fuse unit to AC DB) complete with lugs.	16	Mtr.		
2 X 6.0 Sq.mm Copper Wire (ROTARY SWITCH TO UPS and UPS DB) + 1X 2.5 Sqmm copper earth wire in PVC Pipe fixing on walls or chassing the walls and making it good with cement mortar of 1:5 ratio including Connecting ,testing etc. compete	45	Mtr.		
2 X 2.5 Sq.mm Copper Wire (Electric Panel to Glow Sign Board) + 1X 1.5 Sqmm copper earth wire in PVC Pipe fixing on walls or chassing the walls and making it good with cement mortar of 1:5 ratio including Connecting ,testing etc. compete with lugs	18	Mtr.		
<b>AC POINT</b>				
Point Wiring with 2 No. 4.0 Sq.mm and 1 No. 2.5 Sq.mm Multistrand Copper Wire & 20/25 Amp. Metal clad plug & Socket DB complete in all respect as required by the Bank (for 1.0 & 2.0 Tr AC)	0	Nos.		
<b>EARTHING</b>				
PIP technology GEL type 50mmdia 3000mm long earth electrod.	2	Nos.		
12 SWG Bare Copper Earth Wire from earthing pit /Earth terminal to load point (UPS DB and Main DB etc)	22	Mtr.		
<b>UPS POINT</b>				
Supply & Installation of point wiring for <b>Primary UPS</b> or stabilized power plug points on workstations / table for computers using 3 X1.5 Sq.mm copper conductor multi starnd FR PVC sheathed flexible wire pulled through floor raceways/conduit and taken upto table top using PVC rigid or flexible conduits run within wooden/metal partitions. Each point consisting of 2 nos of 10A , 3 pin sockets & 1 No., 20A Switch with socket (Modular)with indicator, wired together forming one point. The earth wire of green color only.	7	Nos.		
<b>RAW POWER POINT</b>				





Supply & Installation of point wiring for Raw power plug points on workstations / table for computers using 3 X2.5 Sq.mm copper conductor PVC sheathed flexible wire pulled through already laid floor raceways and taken upto table top using PVC rigid or flexible conduits run within wooden/metal partitions. Each point consisting of 1 nos of 16A , 6 pin sockets & 1 No., 16A Switch (Modular), wired together forming one point. The earth wire of green color only.	5	Nos.		
LIGHT/FAN POINT				
Supply & Installation of concealed point wiring using 600v grade 1.5 Sq.mm copper conductor PVC insulated wires (with proper R,Y,B color code ) pulled through heavy gauge PVC conduits laid concealed over false ceiling including 2 Nos. 2.5 sqmm circuit wires from the relevant DB and also including 2.5 sqmm green color copper earth wire and switch plate, switches, etc. as approved by the Bank's Engineer/Architect.				
Primary light points including the cost of 10 A modular switch	30	Nos.		
Ceiling Fan Point including the cost of 10A modular Switch along with 4/5 step electronic fan regulator.	2	Nos.		
Wall Fan Point along with 10 AMP modular switch	8	Nos.		
Exhaust Fan Point along with 10 AMP modular switch	1	Nos.		
6/10A Switch with 5pin 10A socket in light & fan board	5	Nos.		
DATA CABLING & POINT				
Supplying and laying of D-Link make CAT-6 (UTP) cable through trenches / conduits.				
Supplying and laying D-link make CAT-6 Cable complete with CAT-6 information outlet with plate & surface Box at individual Tables	7	Nos.		
Supplying and fixing of 2 mtr long crimped patch cord	7	Nos.		
24 Port D-Link Switch	1	No.		
SITC of 9U rack	1	No.		
FIXTURES				
Supply and Installation of Square light fitting (2' x 2') LED green square Philips. Supply and Installation of Square light fitting (2' x 2') LED green square Philips.	14	Nos.		
Down Lighter 1x12W LED Panel white	14	Nos.		
Tube Light(LED) - Patti Type. (18 watts)	4	Nos.		
1200mm Ceiling Fan	4	Nos.		
400mm Wall Mounted Fan	6	Nos.		
Exhaust Fan (9") Metal Body	1	Nos.		
Call Bell Wireless.	1	No.		
1x 7 W LED Bulb with holder	4	No.		
			TOTAL (Rs.)	
			GRAND TOTAL	
NOTE -: All work should be done as per Bank's Specification.				



PROJECT - SPECIFICATION FOR FURNITURE WORKS.		
BANK - BARODA U.P. BANK		
BRANCH- LEWA ROAD		
REGIONAL OFFICE- CHANDALI		
*ALL WORKS TO BE DONE AS PER TENDER CONDITIONS.		
A	FURNITURE ITEMS	
1	LAMINATES (IS-2046) / VENEER	GREEN LAM / CENTURY / ARCHID / FORMICA / SUNMICA
2	COMMERCIAL PLY (IS-303) / WATERPROOF PLY (IS-710) / BLOCK BOARD (IS-1659) / FLUSH DOOR (IS- 2202)	ARCHID/ CENTURY / GREEN /SAMRAT
3	ADHESIVES	FEVICOL/ VAMICOAL
4	LOCKS	GODREJ
	MULTIPURPOSE GROUP LOCK	E-MPL1-22 / E-MPL1C-22 (EBCO)
	NIGHT LATCH	8812 (GODREJ)
	CYLINDRICAL LOCK (SS MATT FINISH)	3792-WITH KEY AND 3786-KEYLESS (GODREJ) / C120SS (EUROPA)
	MORTISE DEAD LOCK (TWO WAY)	8815(GODREJ)
	MORTISE LOCK WITH DOOR HANDLE	MATIZ 8083(GODREJ)
5	DRAWER CHANNELS	GODREJ/ HATTICH/ OZONE
	TELESCOPIC CHANNELS (ZINK PLATED)	STDS35(I)35/ STDS25(I)35/ STDS50(I)35/ STDS60(I)35
	BOTTOM CHANNELS (POWDER COATED)	BMDS 35/ BMDS 37/ BMDS 55/ BMDS 60 (EBCO)
6	GENERAL HARDWARE	SS MATT FINISH
	DOOR STOPPER	I) BLACK/IVORY/BROWN/SILVER COLOR POWDER COATED DS1 (EBCO) II) SPRING TYPE BLACK/BROWN/IVORY COLOR POWDER COATED (ECGL'S STERLING)
	HINGES	I) 3"/4"/5"/6" 1.8MM TH. SS MATT FINISH (SUZU) II) 75X12X19 1.2 MM TH. SS MATT FINISH FOR STORAGE (SUZU) III) AUTO CLOSE HINGES – SLIP ON HINGE- EURO / CLICK ON HINGE-I (EBCO) FOR STORAGE
	HANDLES 'D' OR 'C' TYPE	1) 3"/4"/6"10MM DIA SS 202 MATT FINISH (ANJALI)





	TOWER BOLT	3"/4"/6"/8" BRASS EXTRUDED SS MATT FINISH (OSWAL)
	SLIDING CHANNEL	EBCO MAKE APPROVED BY ARCHITEC/BANK.
7	FLOOR SPRING	RITZ,HYPER,EVERITE (ISI Mark)
8	DOOR CLOSURE	RITZ,HYPER,EVERITE (ISI mark)
9	PATCH FITTINGS FOR DOOR AND FIXED GLASS PARTITION (TOP/BOTTOM PATCH, PIVOT, PATCH LOCK, L ARM, L CONNECT, CONNECTOR, FLOOR SPRING, HANDLE, PLASTIC PROFILE)	GODREJ / XL C SERIES(DORMA) / OPF SERIES (OZONE)
10	GLASS / MIRRORS	SAINT GOBAIN / MODI
11	ALUMINUM SECTION	JINDAL / HINDALCO
12	WINDOW BLINDS	VISTA / AEROLUX/HUNTER DUGLUS / MAC
13	POLISH / PAINT	ASIAN PAINTS / BERGER / NEROLAC
14	PARTICLE BOARDS	NOVAPAN / KITLAM/DECO BOARD
15	COMPUTER ACCESSORIES	
	CPU HANGER/ SHELF	SIDE MOUNTED IS CPU HL SM (INNOFITT) /CPUSM(EBCO) ,
	CABLE MANAGER (60MM)	I) METAL - CO60ZN1(EBCO) II) PVC - CO 60 (EBCO) BLACK/IVORY/GREY COLOR
16	ACP PANEL	TIMEX / ALU DECOR / EURO
19	WHITE FILM FOR GLASS	CRYSTAL / SONA MAKE VINYL FROSTED FILM
B	PAINTS	ICI, ASIAN,DULUX, BERGER, NEROLAC, JOHONSON & NICOLSAN
1	ANTI CORROSIVE PAINT	TIKITAR, FINCOAT
2	RED OXIDE	ASIAN, DULUX,NEROLAC
3	POLISH	ASIAN MELAMINE
4	EXTERIOR PAINTS	DULUX WEATHERSHIELD OR APP. EQUIVALENT
5	ENAMEL PAINT	ICI, DULUX, ASIAN, NEROLAC
C	FALSE CEILING	
1	GYPSUM BOARD	GYPROC (SAINT GOBAIN)
2	FRAMING WITH COMPLETE SYSTEM	GYP STEEL ULTRA (SAINT GOBAIN), RAMCO FUJI
3	HILUX BOARDS	RAMCO OR APPROVED EQUIVALENT



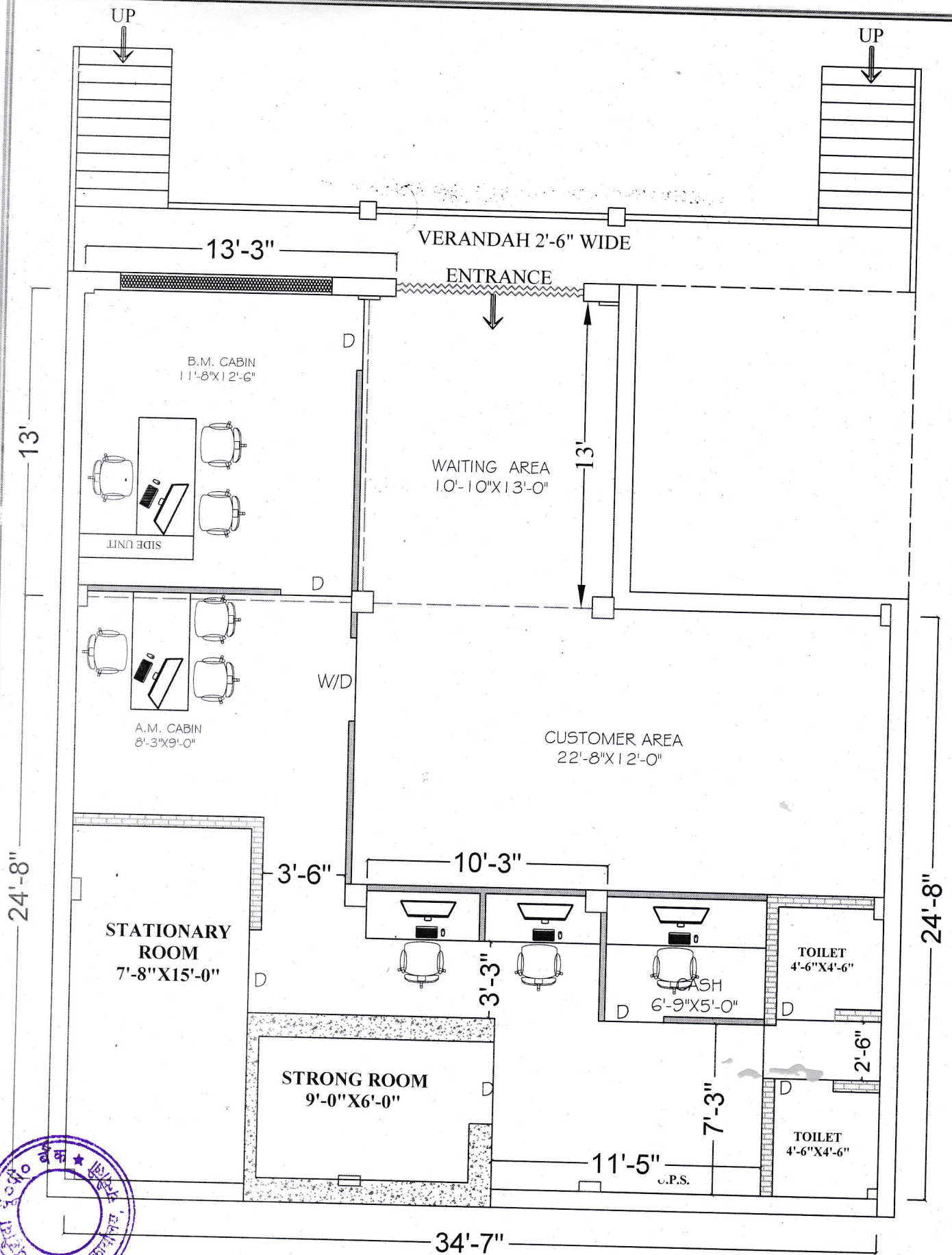
4	MINERAL FIBRE TILES CEILING WITH COMPLETE SYSTEM	ARMSTRONG/SAINT GOBAIN/USG
<b>PROJECT - SPECIFICATION FOR ELECTRICAL WORKS.</b>		
<b>BANK - BARODA U.P. BANK</b>		
<b>BRANCH- LEWA ROAD</b>		
<b>REGIONAL OFFICE- CHANDALI</b>		
<b>*ALL WORKS TO BE DONE AS PER TENDER CONDITIONS.</b>		
<b>D</b>	<b>APPROVE MAKE LIST FOR ELECTRICAL</b>	
1	PVC rigid conduits & Accessories:	1.5 mm thick ( MMS ) ISI and FIA approved - Precision / Vraj / Nihir / BLP / PFI / Anchor / Polycab make. ( Only white coloured pipes FRLS type to be used. ).
2	L.T. Cables:	Havells / KEI / Polycab / Finolex.
3	Wires (FRLS):	Havells / KEI / Polycab / Finolex.
4	Main Distribution Boards:	MDS Legrand (Lexic ) / Hager / Crabtree XPOA / Schneider ( Eazy 9 ) / L & T EXORA / C & S Wintrip / Siemens Bitaguard.
5	ELCB / RCCB / Miniature Circuit Breaker:	MDS Legrand (Lexic ) / Hager / Crabtree XPOA / Schneider ( Eazy 9 ) / L & T EXORA / C & S Wintrip / Siemens Bitaguard.
6	Switch gears:	MDS Legrand (Lexic ) / Hager / Crabtree XPOA / Schneider ( Eazy 9 ) / L & T EXORA / C & S Wintrip / Siemens Bitaguard.
7	Change Over Switch:	HPL Socomac/ Havells / L & T / Hager.
8	Domestic fittings:	
	a) All Switching Modular Accessories.	MK Wrapped Wround Plus / Schneider Livia / L & T entis / Crabtree Verona / Salzer Elite / Legrand Myris / C & S Divino / SSK Ace.
	b) Holders / ceiling roses	Anchor
	c) Adhesive Tape	Bhor (Steel Grip) .
9	10 - 30 A Polycarbonate Socket & Top:	MDS Legrand (Lexic ) / Hager / Crabtree XPOA / Schneider ( Eazy 9 ) / L & T EXORA / C & S Wintrip / Siemens Bitaguard.
10	Telephone Wires / Cable:	Finolex / Havells / L & T / Polycab.
11	Telephone tag block:	Krone make.
12	Cable Lugs:	Dowell / Lotus / Jainson / 3 D.
13	Cable gland Single / Double Compression:	HMI / Comet / 3D.



14	Ammeter / Voltmeter:	AE / HPL / MECO / Enercon make.
15	Selector switches:	L & T salzer / Kaycee make.
16	Indicator lamps:	LED type Teknic / Precifine/ Binay.
17	Connector strips:	Wago / Elmex make.
18	Lighting Fixtures :	Wipro / Philips / GE / Crompton. only
19	Exhaust fan (Light duty):	Khaitan / Crompton / Havells.
20	Ceiling Fan ( 5 star rated ):	Crompton ( High Breeze Plus ) / Havells.
21	Wall mounted Fan ( 5 star rated ):	Crompton ( High Flow Wave ) / Havells.
22	Data Cable - I / O Unit:	D - Link / Digi Link.







PROPOSED PLAN FOR:-  
 BARODA U.P. BANK, BRANCH- LEWA ROAD,  
 R.O. - CHANDAULI  
 DRW. TITLE :- UPPER GROUND FLOOR  
 INTERIOR PLAN



Ar. RAJESH KUMAR SINGH (B.Arch)

VISION ARCH

Plot no. 166, V.D.A. Colony, Badalalpur  
 (Chandmari) Varanasi M.No.9450165944  
 EMAIL: VARCH2000@GMAIL.COM