



**बड़ौदा यू.पी.बैंक**  
**Baroda U.P. Bank**

प्रधान कार्यालय : बुद्ध विहार व्यावसायिक योजना, लारामंडल, गोरखपुर-273016  
शिविर कार्यालय : ए-1, सिविल लाइंस, रायबरेली-229001, फोन : 0535-2702075  
e-mail : ho@barodauprb.co.in

## TENDER NOTICE

Baroda U.P. Bank, Regional Office Faizabad, intends to invite Tenders from bonafide empanelled contractors for the proposed interior work of Ambarpur Branch at AmbedkarNagar, U.P. as per enclosed Offer Bid/BOQ proforma.

The completion period of work will be 30 days from the date of issue of order. The work shall be executed under the supervision of our consulting Architect and as per specifications demonstrated in Offer Bid proforma/BOQ.

Offer Bid proforma/BOQ is attached with this notice. Offer should be valid for a minimum period of -120- days from the last date of submission. No brokerage shall be paid. The sealed covers marked as Bid superscribing "FURNISHING WORK BID FOR AMBERPUR BRANCH" be put in one sealed cover/packet addressed and submitted to The Regional Manager, Baroda U.P. Bank, Regional Office- Faizabad , Baldev Niwas Compound, Acharya Narendra Dev Nagar, Reidganj, Faizabad, U.P.-224001 within 15 days from the day of publication of this advertisement / on or before 13.05.2021 by 17.00 hrs.\*

Any decision taken by Bank at any point of time in connection with this process shall be final and conclusive and no claim or dispute from any quarter in that regard shall be entertained.

**Date: 29.04.2021**

  
Regional Manager

*Attached: Offer Bid Proforma/BOQ*

**Gunjan and Associates**Architects, Engineers, Interiors  
& Landscape Designers

141,Sainik Nagar,Raibareilly Road, Lucknow-226002

Phone: 0522-3553324, 9839018489, 9838818489

E-mail:sudio@gunjanandassociates.com

URL:www.gunjanandassociates.com

**Bill of Quantity for Furnishing works for Baroda U.P. Bank****Branch at Ambarpur, Ambedkar Nagar****Region - Faizabad**

1.No offsite prefabrication shall be allowed in any case. All fabrication shall be done at the site after getting the materials inspected by the architect

2.No payment shall be made for any in completed or unsatisfactory work

3.The Contractor should strictly follow the Booklet requirements of the Bank

including the detailed drawings in the booklet. Any discrepancy between the booklet and the Specifications below should be brought to the notice of the Architect.

4. List of material to be strictly as per the booklet.

5. Cable Managers to be provided in the tables and Counters wherever required.

**6. All underframe should be properly treated with antitermite and waterproofing material**

7. All Locks in the drawers and doorsetc. should be of Godrej

8. All keyboard Trays and Drawers to be on Channel Sliding Mechanism.

**\*The contractor to follow the banks colour Coding. Any other specified colour to be superceded by the Banks Colour code.**

**\*All board to be BWP. Of approved brand and if written BWR it should be superceded by BWP board/ply.**

S.No.	Description of item	Unit	Qty.	Rate	Amount
1	<b>Branch Manager Table with Side Table.</b>	NOS.	1.00		
	Size -5'-6 (L) X 2'-6" (W) X2'-6" (H) Providing and placing in position table made of phenol bonded 19mm thick commercial board with top front and sides finished in <b>1.0 MM Thick laminate and 12mm thick toughened glass on top</b> . The front facade of the table to have 6mm thick and 29mm wide moulding. Every table shall be provided with a key board, drawer, and a cabinet with a shutter below W-375mm, H-750mm, Depth- 500mm.The storage unit shall consist of provision for C.P.U. 600X250 size Keyboard to be made of 19 mm thick commercial board and finished Drawers and a cabinet with a shutter below W-375mm, H-750mm, Depth- 500mm. shall consist of 12 mm thick commercial board for bottom , sides and back of 19 mm thick phenol bonded commercial board with laminate in front and shall slide on tray system provision (sliding mechanism).				
	All the units shall be provided with all the necessary hardware as approved by the Architect. such as knobs, handles, etc. All unexposed surfaces to have two coats of synthetic enamel paint with primer and base, all complete , specifications and directions of the engineer in charge.				

<b>2</b>	<b>OFFICER TABLE WITH SIDE CREDENZA</b>	<b>1.00</b>	<b>NOS.</b>		
	Size -4'-9" (L) X 2'-6" (W) X2'-6" (H) Providing and placing in position table made of phenol bonded 19mm thick commercial board with top front and sides finished in 1.0 mm thick laminate. The front facade of the table to have 6mm thick and 29 mm wide moulding. Every table shall be provided with a key board, drawer, and a cabinet with a shutter below W-450mm, H-750mm, Depth- 500mm.The storage unit shall consist of provision for C.P.U 600X250 size Keyboard to be made of 19 mm thick commercial board and finished.Drawers and a cabinet with a shutter below W-450mm, H-750mm, Depth- 500mm. shall consist of 12 mm thick commercial board for bottom, sides and back of 19 mm thick phenol bonded commercial board with laminate in front and shall slide on tray system provision . Footrest in the teak wood as shown in the drawing to be provided. All exposed edges of ply/ board shall be finished with 6 mm thick teak wood lipping in clear melamine polish.				
	The edges of the Table top to be finished with 24 mm teak wood moulding as approved by the Architect. All the units shall be provided with all the necessary hardware as approved by the Architect such as knobs, handles, etc. All unexposed surfaces to have synthetic Two coats of synthetic enamel paint with primer and base, all complete as per specifications and directions of the Architect.				
<b>3</b>	<b>Cash Cabin Partition</b>	<b>Sq.ft.</b>	<b>155.00</b>		
	Cash cabin partition made of both side 6.00 mm commercial ply on kail wood frame section 50x35 mm and 1.00 mm mica, aluminum grill partition and mica laminated aluminum grill door complete with locks, top of cash cabin covered by aluminum grill. Including all locks & handles,door closer. Size of cash cabin 5.6 ft x 7 ft x 7.5 ft, .and include Front of the cash Cabin to be glazed with 12 mm thick etching glass fixed in position by teak wood members complete to the satisfaction of the architect.The cash cabin to have night latches as per direction of the architect.This would also include decorative aluminium jali at the top of cash cabins fixed with teak wood members.(CASH CABIN TOP IS NOT INCLUDED IN THE MEASUREMENT).				
<b>4</b>	<b>Cash Counter</b>	<b>Rft.</b>	<b>5.25</b>		
	Bank counter of approved design for cashier made of 19.00 mm commercial block board and mica 1.00 mm thick of approved brand and colour on front customer top and writing desk. Height of counter from customer side 114 cm (45").width of writing desk 75 cm.(30") with provision of cupboard after every 1.20 mts made of 19.00 mm block board with 1.0 mm sunmica pasted on both side( inner and outer) , and teakwood beading complete with quality polish finish. Mica pasted on both sides external & internal including all locks & handles with door closer .				
<b>5</b>	<b>Front Counter</b>	<b>Rft.</b>	<b>17.00</b>		

	Front counter made of 19.00 mm block board with table top at the height 75 cm and 80 cm wide sunmica 1.0 mm on top and cupboard and sliding key board with provision of fixing of glass in front. Mica pasted on both sides external & internal including all locks & handles				
<b>6</b>	<b>Cash Cabin- Aluminium Grill Top with teak Decorative Grill Partition).</b>	<b>SQFT</b>	<b>42.00</b>		
	Providing and fixing of Aluminum grill work in cash counter top with all nessecary fixing support of 'L' , 'H' and 'C' aluminium sections and etc.Cost include 'L' , 'H' and 'C' aluminium sections, hardwares, tools, wastages, lead, lift, labour charges, oading,unloading charges, cutting, transport and etc.Complete as per instructions of the Architect.				
<b>7</b>	<b>12 MM Glass on Front Counter &amp; Cash Counter</b>	<b>Sq. ft.</b>	<b>45.00</b>		
	12 MM float glass with rounded edges with etching as per the requirement of bank for Front counter (Height: 60 cms) (With teak wood frame 70 cm).				
<b>8</b>	<b>Low Height Partition</b>	<b>Sq.ft.</b>	<b>230.00</b>		
	Low Height Partition made of both sides 6.00 mm commercial ply laminated with 1.0 mm sunmica on Cheed Wood frame section 50.00 mmx30.00 mm with glass of 12 mm and door made of 100 x 25 cheed wood frame and ply and mica including all locks, handles & bolt, quality polish etc. Sample bank's low height partition .(LOW HEIGHT PARTITION HEIGHT 4'-0")				
<b>9</b>	<b>Storage (Low Height )</b>	<b>Sq.ft.</b>	<b>70.38</b>		
	<b>Size-2'-6" highX 1'-6"deep</b>				
	<b>Ply Wood-19.0mm thick board for side top and door &amp; back 6.0mm IS 303 with shutters, shelf 19.0mm ply</b>				
	<b>Shelf-19.0mm thick MR Grade IS303 ply</b>				
	<b>Handle-Brush finish stainless steel</b>				
	<b>Lock-Vijayan/Godrej</b>				
	Internal surface zinc oxide polish and other required accessories instructed by Bank's Engineer/Architect.				
<b>10</b>	<b>Column /Wall Panelling /Meter Boxing</b>	<b>Sq.ft.</b>	<b>158.04</b>		
	Providing & fixing in position 2"x 2" kailwood frame and finished with 6 mm thk. Commercial ply on both sides with 1.0 mm thk. Laminate on top as per instruction of the Architect.column panelling only 7.5' height				
<b>11</b>	<b>Notice Baord</b>	<b>No.</b>	<b>1.00</b>		
	Notice Board made of 19.00 mm board (size: 3'-0"x3'-0") laminated sides and covered by good quality Cherry Colour Velvet with attached Cheque Writing Desk (6"x6"x9") with attached Two Battens for Support, Sunmica Pasted on all sides.				
<b>12</b>	<b>Writing Desk Including Suggestion Box and Cheque Drop Box</b>	<b>No.</b>	<b>1.00</b>		

	Writing ledge of 19 m.m. Phenol bonded board as/design on 19 mm thick with pockets for slips of 6m.m. glass machine polished with seperators completed to the satisfaction of the architect and the Drawing. The Writing ledge includes a Suggestion box below, cheque drop box and a notice board above complete to the satisfaction of the Architect.				
<b>13</b>	<b>Hydraulic Door Closure. ( to be Godrej )</b>	<b>No.</b>	<b>1.00</b>		
	Providing and fixing of hydraulic door closure (Make - Godrej, Product Code - 4539 or equivalent) for doors. It shall incorporate the following –				
-	Body manufactured from Aluminium extruded alloy machined to extreme accuracy.				
-	Rack and Pinion-made of machined alloy steel duly heat - treated.				
-	Adjustable closing speed.				
-	Suitable for right hand and left hand opening doors.				
-	Suitable for door/frame mounting.				
-	Suitable for door weight up to 60 kgs.				
-	Suitable for 180 / 100 degree door opening.				
	All complete to the satisfaction of the Architect.				
	<b>Total</b>				
<b>14</b>	<b>Bayback of old Furniture</b>	<b>Job</b>	<b>1.00</b>		
	<b>Grand Total (Rs.)</b>				

**Note: All rates are excluding G.S.T.**

For GUNJAN & ASSOCIATES  
  
 (Ar. GUNJAN KAPUR)  
 PROPRIETOR

**Ar. Gunjan Kapur**

**for Gunjan & Associates**

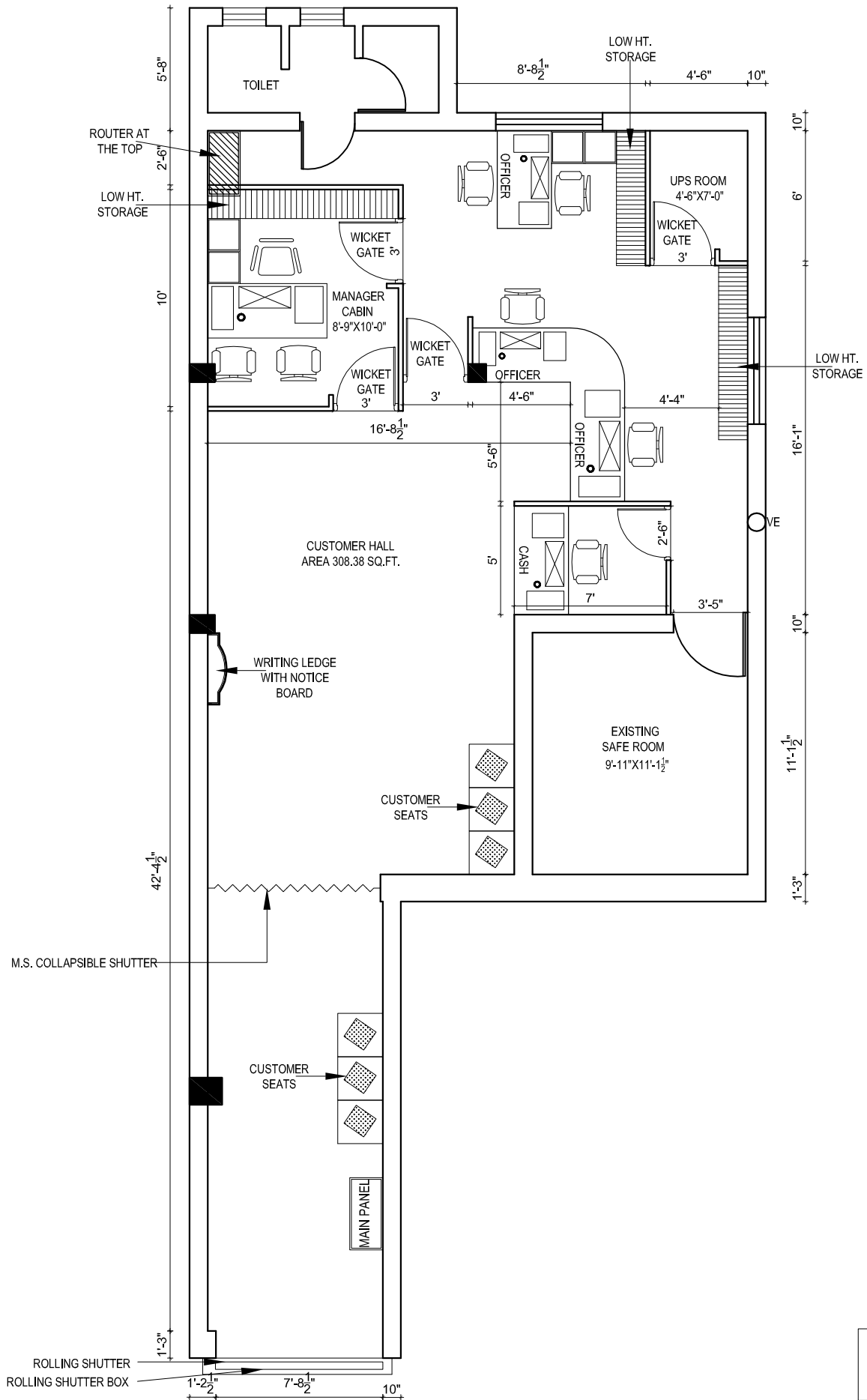
**BARODA U.P BANK****LIST OF MATERIALS OF APPROVED BRAND AND/OR MANUFACTURER**

1. The contractor shall use materials in their work subject to inspection, prior to dispatch, by Owner or his authorized representative of any materials not otherwise specified, shall be in Accordance with the following list. All materials not otherwise specified shall be in accordance With the latest Indian Standard Specifications, where such exists with prior approval of Owner /Architects. The contractor shall be bound to offer sample of materials, which are Claimed to be conforming to I.S Specification, for testing at an approved testing laboratory.
2. Contactor shall purchase all materials from the makers or their authorized stockist only. Necessary documentary evidences must be produced to the Owner or their authorized Representative on demand.
3. Contractor shall be bound to supply items or any make of the items as per the choice of the Owner/ Architects.

**A CIVIL / FURNISHING WORK**

S.No	Description	Approved Brand/ Manufacturer
1.	Cement	M/s ACC, M/sPrism ,M/s Jaypee
2.	Wood	Kail wood
3.	Polish	MRF Polyurethane
4.	Termite treatment	Chloroporyphos 20% concentration / Dusban /Terminator pidlite make
5.	Soft Board	Celotex
6.	False Ceiling and Sections	Grid Tiles ---Armstrong, St Gobain Gypsum India,
7.	Aluminium sections	Hindalco, Jindal, Indal
8.	Vitrified Floor tiles	SOMANY,ASIAN,JOHNSON
9.	Block boards / Plywood/Flush doors	M/s Duro ( BWP),M/s Century(BWP), M/s Archid (Gold), (BWP) No alternate brands from the same manufacturer allowed
10.	Laminates	M/s Green, M/s Merino, M/s Century, M/s Archid, <b>1.0 mm thick only.</b>
11.	Hardware-(Aluminium)	Approved design, brand, quality & manufacture Allowed
12.	Hardware	ALL HARDWARE TO ONLY GODREJ
13.	Drawer/ cabinet Handless/locks	Dorset / Kitch/ Godrej/ hettich
14.	Magnet Catcher	Supreme, Excel
15.	Drawer / cabinet shutter Accessories	Ebbco, Hettich, Hafele
16.	Synthetic Enamel Paints, Distemper or Plastic paint Best quality of make as approved	Asian Paints Ltd), Berger Paints (India) Ltd.(Luxol), ICI, Nerolac.
17.	Venetian blinds/ verticals	Vista/sun
18.	Glazing	M/s Modiguard, M/s asahi india, Saint Gobain.
19.	Door Closer/ floor spring	Godrej, Dorma, Ozone
20.	Glue Adhesive	Fevicole, Century
21.	Door handles/ Locks	Godrej
22.	Screw	Excel GKW
23.	Glass brass bracket	Flora, Perfect
24.	POP bag or readymade work	Diamond (Super fine quality)
25.	GI section for Partitions, Panel, false ceiling	Same Company as of Gypsum Bard or Mineral Fibre tiles
26.	Film	Alkor, Garware, 3M
27.	Plants	
28.	Wire management holes	Twinkle
29.	Cement Board	E board, Bison,
30.	Vitrified floor tiles adhesive / Grout	Bal Endura, Dr. Fixit Fevimate XL with Polymer Modified Mortar, ROFF Granite tile adhesive

31.	Texture	Spectrum , Heritage, Acro paint
32.	Upholstery	Raymonds
33.	Sanitary Fixtures	Cera, Hindware, Parryware
34.	GI Pipes and accessories	TATA
35.	CI Pipes and accessories	NECO
36.	Plumbing Fittings	Jaquar Continental series
37.	Ceramic Tiles	Kajaria (High Lighter Concept)
38.	Chairs / Sofa	Godrej, Delite / Debono



CARPET AREA-  
1014.11 SQ.FT.

ALTERNATIVE-2

DRG. TITLE:-

LAYOUT PLAN FOR  
BARODA U.P. BANK BRANCH AT,  
AMBARPUR AMBEDKAR NAGAR,  
REGION - FAIZABAD.

Drq.Title

LAYOUT PLAN

North



Date

MAR -2021

Drawn By

GUNJAN & ASSOCIATES

ARCHITECTS, ENGINEERS, INTERIOR  
AND LANDSCAPE DESIGNERS,  
141, SAINIK NAGAR, LANE NO-9 RAEBARELI ROAD  
LUCKNOW-226002

Phone: +91 9839018489, 9838818489

E-mail:- arunjan@yahoo.com

E-mail:- studio@gunjanandassociates.com

Web:- www.gunjanandassociates.com