



**बड़ौदा यू.पी. बैंक**  
**Baroda U.P. Bank**

**Regional Office: Chandauli**  
**Phone: 05412-251038**

Ref: BUP Bank/ROCHAN/P&E/Furnishing/586/2021-22

Dated: 08.12.2021

**TENDER NOTICE**

Baroda U. P. Bank, Regional Office, Chandauli intends to invite Tender from bonafide empanelled contractors for the proposed interior work of **Chandauli branch** at Chandauli (**Chandauli Region**), District- Chandauli, U.P. as per enclosed offer BID/BOQ profarma.

The completion period of work will be 30 days from the date of issue of order. The work shall be executed under the supervision of our consulting Architect and as per specification demonstrated in offer BID Profarma/BOQ.

Offer BID Profarma/BOQ is attached with this notice. Offer should be valid for a minimum period of 120 days from the last date of submission. No brokerage shall be paid. The sealed covers marked as Bid superscribing " **FURNISHING WORK, ELECTRICAL WORK & LAN CABLING WORK BID FOR CHANDAULI BRANCH** " be put in one sealed cover/packet addressed and submitted to **The Regional Manager, Baroda U.P. Bank, Regional Office-Chandauli, G.T.Road, Alinagar, Post- Mughalsarai, Chandauli, Pin Code- 232101** within 21 days from the date of publication of this Tender Notice on website / on or before dated **29.12.2021 by 5.00 P.M.**

Any decision taken by Bank at any point of time in connection with this process shall be final and conclusive and no claim or dispute from any quarter in that regard shall be entertained.

- **Please note that Retention money @10% of cost value will be hold, which will be payable after one year if no adverse comment is noted.**

  
**Regional Manager**

क्षेत्रीय कार्यालय, अलीनगर, मुगलसराय, चन्दौली-232001, दूरभाष: 05412-251036 / 37 / 38

Regional Office, Alinagar, Mughalsarai, Chandauli-232001, Telephone: 05412-251036/37/38

e-mail: ROCHAN@barodauprb.co.in

Dated :- 02-12-2021

**Schedule of Quantity/ Tender of Furnishing work of Baroda U.P. Bank  
Chandauli Main Branch Distt. & R.O. Chandauli**

S.No.	Item's of work	Qty	Unit	Rate	Amount(Rs.)
1.	<b>Bank Low ht. Counter</b> 2'-6" wide made out of 19mm thick board with drawer unit and front side 12mm thick Etching Glass Supported with Teak wood or Aluminum member With 1.0 mm,thick laminate on the top & Drawer unit shall be provided on one side while with space for CPU by its side pull out tray on slide shall be provided on each counter for keeping keyboard. all the exposed edges shall have 6 mm. TW lapping duly polished inside surface shall be enamel painted two coats over primer coats. It shall be locks & handles etc. provision for wire management shall be made. Complete work as per branch Manager/ Architect Satisfaction.	9.00	Rft		
2.	P/F of <b>Bank Cash counter</b> in partition two level cash counter 5'-0" long (with 3'-10" and 2'-6"height) counter for customer to be 1'-6"wide and counter to be 3'-0"wide with drawer unit made out of 19mm thick board with 1.0 mm thick laminate on top and front and other internal surface to be painted/polished complete as per item no.1	6.0	Rft		
3.	P/F of <b>Cash cabin partition</b> front-over the counter supported on 2"x1-1/2" sal wood frame work cover with 8.0 mm thk. Etching glass supported of 1"x 1/2" beading with book window in size 5"x6" center of the counter with 2"x2" spacing Aluminium grill will be fixed in front of partition Side partition supported 2"x1-1/2" sal wood well seasoned structure with a coat of antitermite treatment up to 3'-0" height framing of inside area with 2"x1-1/2" sal wood section 2'-0"c/c				



(2)

horizontal and vertical with both side  
6mm thick ply&1.0mm thick laminates  
both side. The upper portion up to 4'-0"  
height shall be of 2-1/2"x2"x2-1/2"  
Aluminum grill will be fixed complete  
with all accessories and labour.

248.00 sft

4. P/F of Low Ht.(4'-6'' High) Partly glazed  
Laminated Portion in **Branch Manager/  
Advance dept. Cabin** the Under Framing  
shall be of 2''x2'' sal wood ( Anti termite Treatment)  
for under framing at a max. distance 2'-0'' in each  
direction. 6 mm th. Waterproof Ply shall be fixed on  
two side & 1.0mm thick laminated shall be pasted over  
its with chemical adhesive Provision shall be made  
molding melamine Polished shall be fixed Wherever  
necessary bottom 4'' width shall have 5mm th.  
Plane glass 242.00 sft
5. P/F of Low Ht.(4'-6'' High) Laminated Portion  
for **UPS Space** the Under Framing shall be of  
2''x2''sal wood ( Anti termite Treatment) for under  
frame in at a max. distance 2'-0'' in each direction.  
6 mm th. Waterproof Ply shall be fixed on two side &  
1.0mm thick laminated shall be pasted over its with  
Chemical adhesive 54.00 sft
6. P/F Low height partition/**Wicket gate** all  
specification as item No.4 . 14.00 sft
7. Providing and fixing in position double leaf  
powder coated **Aluminum** entrance door  
made of 14 guage thick sheet. All member  
shall be of 4''x1-3/4''section and bottom rail  
shall be of 5''x1-3/4''section with 6mm thick  
clear sheet glass including 4''dia 2 Nos. handles  
10''long 2 Nos, Tower bolts, floor spring 2 Nos.  
lock etc. complete. 110.00 sft
8. P/F of **Godrej Night latch.** 1.0 No  
9. P/F of **Godrej mortic lock** 2.0 Nos  
10. P/F of **Door closer** I.S.I mark 1.0 Nos.



(3)

11. Providing and fixing **Writing desk** in position box type Wooden writing in public space of approximate size 4'-0" x 2'-0" made out of 19mm thick good approved quality ply with 6" to 9" wide wide pigeon hole type compartments in the front facade boxing for keeping pay-in-ship, book literature etc. These Writing table's must have laminates 1.0 mm thick on top writing desk and two sides of the Boxes. With beading, lipping, molding and painting /polishing complete. 1.0 No.
12. Suggestion box 1.0 No.
13. Check Drop Box 1.0 No.
14. Providing and fixing Aluminum grill in cash cabin Grill Size 2-1/2"x2"x2-1/2" will be fixed complete with all accessories & labour. 63.0 sft
15. Providing and fixing in position **Notice boards** of approximate size 3'-0"x2'-0" and 6" deep made out of 19mm thick ply with fully glazed shutter in front and soft board with felt cloth lining at the back inclusive of good approved quality lock to this shutter, hinges, fixtures, handle etc. and front laminate /painted complete as directed by bank architect. 1.0 No.
16. Providing and placing in position **side units** made out of 19mm board with 1.0mm laminate with sliding hinged shutters (made out of 12mm thick ply with 1.0mm thick laminate on it) complete with handles etc. size 4'-0"x1'-6"x2'-6" 2.0 No.
17. Providing and fixing **Column/Wall paneling** (8'-6" Height) paneling all specification as per item no.4. 174.00 sft



(4)

18. Providing & fixing wooden **Filling Cabinet**  
1'-6" deep to be fixed on the wall frame made out  
of 19mm thick commercial ply with siding  
hinge shutters made out of 12mm thick ply  
with 1.0mm laminate on the front & side other  
other internal surface to be painted as complete  
with handle, lock, wall catches etc. 56.00 sft
19. P/F in Position **Branch Manager Table**  
( Size-6'-0" x3'-0" ) made out of 19mm th.  
water proof board with 1.0 mm th. Laminated  
on all exposed surface (others external surface  
shall be painted with two coats of enamel paint  
over one coat of primer) It shall have one unit  
on one side while provision to be made for pull  
out tray on slides. the table to be finished in  
TW/ HW lapping & godrej lock, handles, footrest,  
latches all complete. 1.0 No.
20. P/F in Position **Officer Table**  
( Size-5'-0" x2'-6" ) made out of 19mm th.  
water proof board with 1.0 mm th. Laminated  
on all exposed surface (others external surface  
shall be painted with two coats of enamel paint  
over one coat of primer) It shall have one unit  
on one side while . 2.0 No.
21. **Distemper on walls** surface's with oil bound  
distemper two coats, with approved colour,  
Brand and manufacture of reqd. shade on under  
coateds wall surface to give an even shade  
over and including a priming coat with  
cement primer of approved brand and manufacture  
such as Berger, Shalimar, Asian, Nerolac distemper  
After the priming coat has been applied And  
perfectly died. All holes, scratches if Any shall  
be required as mentioned in Preparations of  
of surface and then first Coat of distemper  
applied and allowed to Dry then second coat  
distemper shall be Applied. Work completed  
up to the bank satisfaction. 4350.00 sft

-----  
Total Rs. -----

(Rs. ----- Lacs ----- Thousand ----- Hundred ----- Only.)



(4)

18. Providing & fixing wooden **Filling Cabinet**  
1'-6" deep to be fixed on the wall frame made out  
of 19mm thick commercial ply with siding  
hinge shutters made out of 12mm thick ply  
with 1.0mm laminate on the front & side other  
other internal surface to be painted as complete  
with handle, lock, wall catches etc. 56.00 sft
19. P/F in Position **Branch Manager Table**  
( Size-6'-0" x3'-0" ) made out of 19mm th.  
water proof board with 1.0 mm th. Laminated  
on all exposed surface (others external surface  
shall be painted with two coats of enamel paint  
over one coat of primer) It shall have one unit  
on one side while provision to be made for pull  
out tray on slides. the table to be finished in  
TW/ HW lapping & godrej lock, handles, footrest,  
latches all complete. 1.0 No.
20. P/F in Position **Officer Table**  
( Size-5'-0" x2'-6" ) made out of 19mm th.  
water proof board with 1.0 mm th. Laminated  
on all exposed surface (others external surface  
shall be painted with two coats of enamel paint  
over one coat of primer) It shall have one unit  
on one side while . 2.0 No.
21. **Distemper on walls** surface's with oil bound  
distemper two coats, with approved colour,  
Brand and manufacture of reqd. shade on under  
coateds wall surface to give an even shade  
over and including a priming coat with  
cement primer of approved brand and manufacture  
such as Berger, Shalimar, Asian, Nerolac distemper  
After the priming coat has been applied And  
perfectly died. All holes, scratches if Any shall  
be required as mentioned in Preparations of  
of surface and then first Coat of distemper  
applied and allowed to Dry then second coat  
distemper shall be Applied. Work completed  
up to the bank satisfaction. 4350.00 sft

-----  
Total Rs. -----

(Rs. ----- Lacs ----- Thousand ----- Hundred ----- Only.)



**Detail Tender for Electrical Work LAN Cabling work of Chandauli  
Branch-Baroda U.P. Bank Ro-Chandauli**

Sl.No.	Particulars	Qty.	Unit	Rate/Unit		Amount	
				Rs.	P.	Rs.	P.
1.	S/F of plug socket board consisting of 3 plug 5 Amp, three pin, three switch and one indicator with 1.5 sq mm separate circuit wiring for computer .	7	No				
2.	S/F of UPS earthing-S/burying of Dual pipe technology (Ripe in Pipe) earthingelectrode having GI 80mm O/D pipe with 25 micron coating, 3metres long. The space between two pipes to be filled with Highly conducive & Non corrosive chemical compound. The vacant space between pipe & hole shall also be filled with Compound all around. The job also includes S/F of GI strip clamp with two holes (with SS/GI bolts & nuts) on the electrode& taking two earthing leads of 4mm dia copper wire (Assumed length of 10m -beyond 10m to be paid extra)upto Main panel complete in all respects with guaranteed E/N voltage of less than 2 volts and resistance less tahn 1ohms. The 4mm dia Cu. earth wire shall be terminated on a separate 6way earthlink. The connections for Panel earthing& earth bus in the panle should be taken from this earthlink	2	No				
3	S/W 10 Amp, Plug point with 2.5 sq mm copper wire in counter with continuous earthing wire complete in all respect with modular switches /socket.	6	No				
4	S/F of LED Batten 20 watt light Fitting with 1.5 sq mm wiring complete in all respect including modular switches	20	No				
5	S/F of 20 Amp plug point with 2.5 sq mm wiring including modular switches /socket with continuous circuit wiring.	5	No				
6	Providing & Fixing of wall mounted fans (400dia) complete with 1.5 Sq mm wiring and modular switches. The work to include making hole in wall	3	No				



7	Supplying and Fixing of cabin fans (400Dia) in cash cabin/ in 1.5 sq mm wiring and modular switches.	1	No		
8	Supplying and Fixing of circuit wiring for computer in 2.5 sq mm copper wire.	8	No		
9	Supplying and Fixing of wiring for lights and fans 1.5 sq mm copper wire complete in all respect.	10	No		

Sl.No.	Items of Work	Qty.	Unit	Rate/Unit Rs. P.	Amount Rs. P.
10	Supplying and Fixing of exhaust fan in toilet/hall 15 Inch dia 1.5 sq mm wiring and modular switches.	2	No		
11	S/F of ceiling fan (1200 dia) with hooks in rooms with adding rod of suitable length wherever necessary including 1.5 sq mm wiring and modular switches and regulator	6	No		
12	S & F of 12 way SPN DB double door with 10No SP MCB and 1 no DPMCB 40 AMP for computer	2	No		
13	Sub main wiring of UPS input and UPS output power supply with 2 no 6 sq mm No. 4 sq mm copper flexible wire in PVC conduit pipe. (payment as/actual length on site)	30	Mtr		





Sl.No.	Items of Work	Qty.	Unit	Rate/Unit Rs. P.	Amount Rs. P.
14	Supply and fixing on board 3 no KIT KAT cut out 200 amp with neutral link on board	1	Job		
15	S/F 63 Amp Changeover	1	No		
16	S/F 63 Amp Main Switch	1	No		
<b>LAN Cabling</b>					
17	Supplying and drawing CAT 6 PVC insulated and Sheathed LAN cable through PVC conduit including testing, commissioning etc.as required.	175	Mtr		
18	Supply and fixing of RJ modem Jack for computer including making connection, soldering etc	7	No		
19	Supply and Fixing of Patch Card with CAT 6 Jack	7	No		
				<b>Total Rs.</b>	

**GRAND TOTAL -----**

(Rs. ----- Lacs ----- Thousand ----- Only.)

**Total Work Furnishing Rs. ----- + Total Work Electrical Rs. -----**

**Combined Total Work Furnishing & Electrical Rs. ----- (----- Lacs ----- Thousand -----  
Hundred ----- Only.**



**PROJECT - SPECIFICATION FOR FURNITURE & ELECTRICAL WORKS.****BANK - BARODA U.P. BANK****BRANCH- CHANDAULI MAIN BRANCH****REGIONAL OFFICE- CHANDAULI****\*ALL WORKS TO BE DONE AS PER TENDER CONDITIONS.**

<b>A</b>	<b>FURNITURE ITEMS</b>	
1	LAMINATES (IS-2046) / VENEER	GREEN LAM / CENTURY / ARCHID / SAMRAT / FORMICA / SUNDEK OR APPROVED EQUIVALENT
2	COMMERCIAL PLY (IS-303) / WATERPROOF PLY (IS-710) / BLOCK BOARD (IS-1659) / FLUSH DOOR (IS- 2202)	ARCHID/ SAMRAT / CENTURY / EURO / GREEN OR APPROVED EQUIVALENT BY EIC.
3	ADHESIVES	FEVICOL / BLUECOAT/ VAMICOAL
4	LOCKS	GODREJ
	MULTIPURPOSE GROUP LOCK	E-MPL1-22 / E-MPL1C-22 (EBCO)
	NIGHT LATCH	8812 (GODREJ)
	CYLINDRICAL LOCK (SS MATT FINISH)	3792-WITH KEY AND 3786-KEYLESS (GODREJ) / C120SS (EUROPA)
	MORTISE DEAD LOCK (TWO WAY)	8815(GODREJ)
	MORTISE LOCK WITH DOOR HANDLE	MATIZ 8083(GODREJ)
5	DRAWER CHANNELS	GODREJ/ HATTICH/ OZONE.
	TELESCOPIC CHANNELS (ZINK PLATED)	STDS35(I)35/ STDS25(I)35/ STDS50(I)35/ STDS60(I)35
	BOTTOM CHANNELS (POWDER COATED)	BMDS 35/ BMDS 37/ BMDS 55/ BMDS 60 (EBCO)
6	GENERAL HARDWARE	SS MATT FINISH
	DOOR STOPPER	I) BLACK/IVORY/BROWN/SILVER COLOR POWDER COATED DS1 (EBCO) II) SPRING TYPE BLACK/BROWN/IVORY COLOR POWDER COATED (FCGI'S STERLING)
	HINGES	I) 3"/4"/5"/6" 1.8MM TH. SS MATT FINISH (SUZU) II) 75X12X19 1.2 MM TH. SS MATT FINISH FOR STORAGE (SUZU) III) AUTO CLOSE HINGES – SLIP ON HINGE- EURO / CLICK ON HINGE-I (EBCO) FOR STORAGE
	HANDLES 'D' OR 'C' TYPE	1) 3"/4"/6"10MM DIA SS 202 MATT FINISH (ANJALI)
	TOWER BOLT	3"/4"/6"/8" BRASS EXTRUDED SS MATT FINISH (OSWAL)

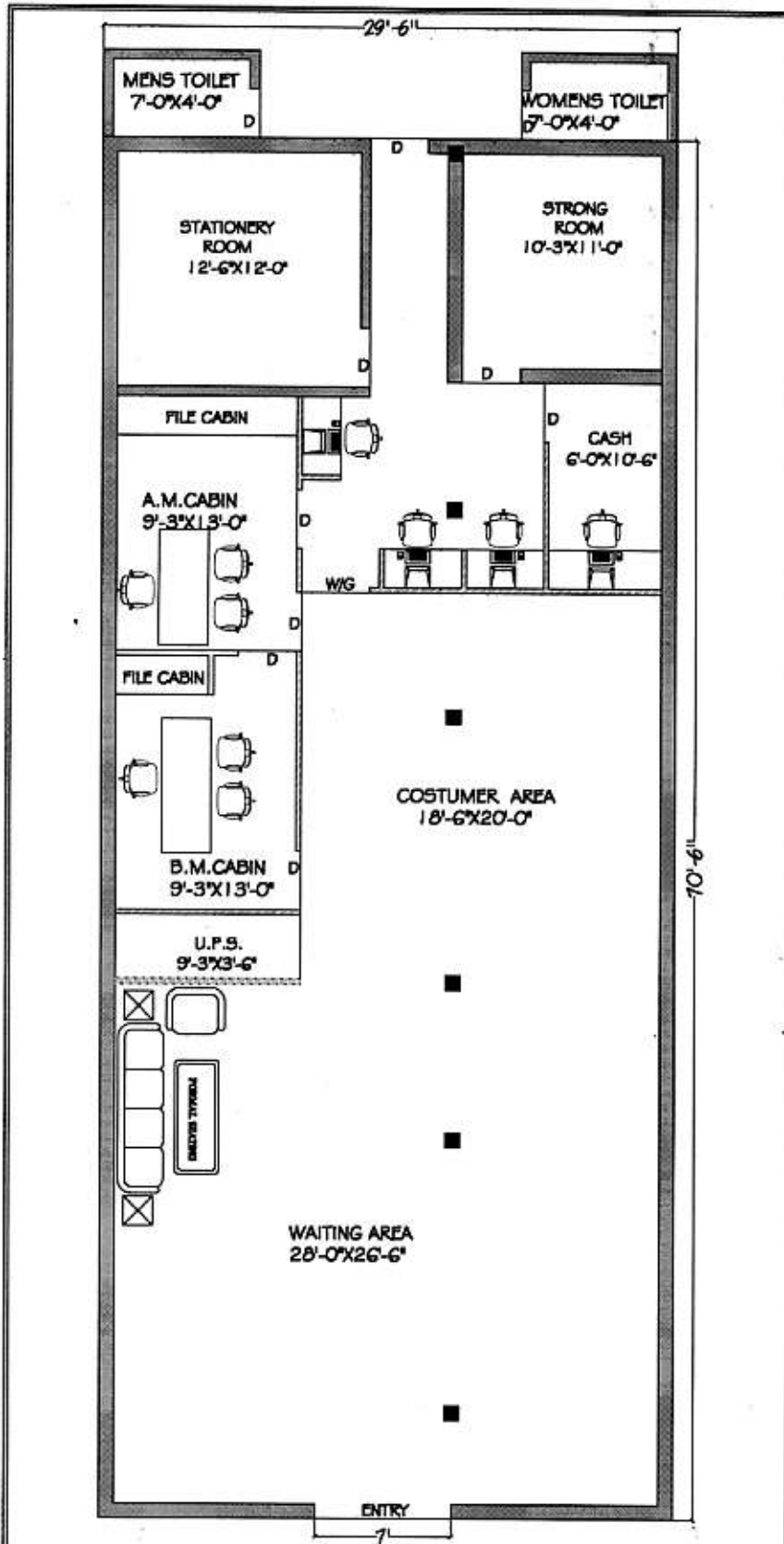


	SLIDING CHANNEL	EBCO MAKE APPROVED BY ARCHITEC/BANK.
7	FLOOR SPRING	
	60 KG	7477 (GODREJ) / M-74 (HARDWYN)
	80 KG	8293 (GODREJ) / M-74 (HARDWYN)
	100 KG	8294 (GODREJ) / M-76 (HARDWYN)
8	DOOR CLOSER	
	60 KG	DOUBLE SPEED 8292-SILVER, 7325- GOLDEN (GODREJ) / SCORPIO (HARDWYN)
	FIRE RATED 60 KG	1938 (GODREJ) / TRITON (HARDWYN)
9	PATCH FITTINGS FOR DOOR AND FIXED GLASS PARTITION (TOP/BOTTOM PATCH, PIVOT, PATCH LOCK, L ARM, L CONNECT, CONNECTOR, FLOOR SPRING, HANDLE, PLASTIC PROFILE)	GODREJ / XL C SERIES(DORMA) / OPF SERIES (OZONE) OR APPROVED EQUIVALENT
10	GLASS / MIRRORS	SAINT GOBAIN / MODI
11	ALUMINUM SECTION	JINDAL / INDAL / BANCO
12	WINDOW BLINDS	VISTA / AEROLUX/HUNTER DUGLUS / MAC
13	POLISH / PAINT	ASIAN PAINTS / BERGER / NEROLAC
14	PARTICLE BOARDS	NOVAPAN / DECO BOARD
15	COMPUTER ACCESSORIES	
	CPU HANGER/ SHELF	SIDE MOUNTED IS CPU HL 5M (INNOFIT) /CPUSM(EBCO) ,
	CABLE MANAGER (60MM)	I) METAL - CO60ZN1(EBCO) II) PVC - CO 60 (EBCO) BLACK/IVORY/GREY COLOR
16	ACP PANEL	TIMEX / ALU DECOR / EURO OR APPROVED EQUIVALENT
19	WHITE FILM FOR GLASS	CRYSTAL / SONA MAKE VINYL FROSTED FILM
<b>B</b>	<b>PAINTS</b>	ICI, ASIAN,DULUX, BERGER, NEROLAC, JOHNSON & NICOLSAN
1	ANTI CORROSIVE PAINT	TIKITAR, FINCOAT
2	RED OXIDE	ASIAN, DULUX,NEROLAC
3	POLISH	ASIAN MELAMINE
4	EXTERIOR PAINTS	DULUX WEATHERSHIELD OR APP. EQUIVALENT
5	ENAMEL PAINT	ICI, DULUX, ASIAN, NEROLAC
<b>C</b>	<b>FALSE CEILING</b>	
1	GYPSUM BOARD	GYPROC (SAINT GOBAIN)
2	FRAMING WITH COMPLETE SYSTEM	GYP STEEL ULTRA (SAINT GOBAIN), RAMCO FUJI
3	HILUX BOARDS	RAMCO OR APPROVED EQUIVALENT
4	MINERAL FIBRE TILES CEILING WITH COMPLETE SYSTEM	ARMSTRONG/SAINT GOBAIN/USG



D APPROVE MAKE LIST FOR ELECTRICAL		
1	PVC rigid conduits & Accessories:	1.5 mm thick ( MMS ) ISI and FIA approved - Precision / Vraj / Nihir / BLP / PFI / Anchor / Polycab make. ( Only white coloured pipes FRLS type to be used. )
2	L.T. Cables:	Havells / KEI / Polycab / R. R. Kable / Finolex.
3	Wires (FRLS):	Havells / KEI / Polycab / R. R. Kable / Finolex.
4	Main Distribution Boards:	MDS Legrand (Lexic) / Hager / Crabtree XPOA / Schneider ( Eazy 9 ) / L & T EXORA / C & S Wintrip / Siemens Bitaguard.
5	ELCB / RCCB / Miniature Circuit Breaker:	MDS Legrand (Lexic) / Hager / Crabtree XPOA / Schneider ( Eazy 9 ) / L & T EXORA / C & S Wintrip / Siemens Bitaguard.
6	Switch gears:	MDS Legrand (Lexic) / Hager / Crabtree XPOA / Schneider ( Eazy 9 ) / L & T EXORA / C & S Wintrip / Siemens Bitaguard.
7	Change Over Switch:	HPL Socomac/ Havells / L & T / Hager.
8	Domestic fittings:	
	a) All Switching Modular Accessories.	MK Wrapped Wround Plus / Schneider Livia / L & T entis / Crabtree Verona / Salzer Elite / Legrand Myris / C & S Divino / SSK Ace.
	b) Holders / ceiling roses	Anchor or equivalent approved make.
	c) Adhesive Tape	Bhor (Steel Grip) or approved .
9	10 - 30 A Polycarbonate Socket & Top:	MDS Legrand (Lexic) / Hager / Crabtree XPOA / Schneider ( Eazy 9 ) / L & T EXORA / C & S Wintrip / Siemens Bitaguard.
10	Telephone Wires / Cable:	Finolex / R. R. Kable / Havells / L & T / Polycab.
11	Telephone tag block:	Krone make.
12	Cable Lugs:	Dowell / Lotus / Jainson / 3 D.
13	Cable gland Single / Double Compression:	HMI / Comet / 3D.
14	Ammeter / Voltmeter:	AE / HPL / MECO/ Enercon make.
15	Selector switches:	L & T salzer / Kaycee make.
16	Indicator lamps:	LED type Teknic / Precifine/ Binay.
17	Connector strips:	Wago / Elmex make.
18	Lighting Fixtures :	Wipro / Philips / GE / Crompton. only
19	Exhaust fan (Light duty):	Khaitan / Crompton / Havells.
20	Ceiling Fan ( 5 star rated ):	Crompton ( High Breeze Plus ) / Havells.
21	Wall mounted Fan ( 5 star rated ):	Crompton ( High Flow Wave) / Havells.
22	Data Cable - I / O Unit:	D - Link / Digi Link.





**PROPOSED PLAN FOR:-  
BARODA U.P. BANK MAIN BRANCH  
R.O. CHANDALI**

DRW. TITLE :- GROUND FLOOR  
INTERIOR PLAN  
PLAN (III)



*Ar. RAJESH KUMAR  
SINGH (B.Arch)*

**VEDON ARCH SH-15/160-1k,  
Bhadai, Varanasi  
M.No.9450165944  
EMAIL:- VARCH0036@GMAIL.COM**

