



बड़ौदा यू.पी. बैंक
Baroda U.P. Bank

SHORT TERM TENDER NOTICE
(For Empanelled Furnishers & Interior Decorators only)

FURNISHING & INTERIOR DECORATION WORK IN SATTI
BRANCH OF BARODA U.P. BANK

IMPORTANT DATES

DATE OF ISSUE OF TENDER NOTICE	02.03.2022
LAST DATE AND TIME OF SUBMISSION OF TENDER	23.03.2022 up to 05:00 P.M.
DATE OF OPENING OF TENDER (FINANCIAL BID)	24.03.2022 at 03:00 P.M.

Baroda U.P. Bank
Regional office Kanpur Dehat
Nabipur, Jainpur Kanpur Dehat
209311(U.P.) (Mob : 7311149818)


Regional Manager

Date: 02.03.2022



NOTICE INVITING TENDER

Sealed item rate short term tenders are invited on behalf of the Regional Manager, Baroda U.P. Bank, from the Furnishers & Interior Decorators having valid Empanelment with the Baroda U.P. Bank for the work of FURNISHING & INTERIOR DECORATION WORK IN SATTI BRANCH OF BARODA U.P. BANK, Regional Office Kanpur Dehat.

1. Issue of tender documents : 02/03/2022 to 23/03/2022
2. Last date of receipt of tender documents : 23/03/2022 upto 5.00 PM
3. Date of opening of tender documents : 24/03/2022 at 03.00 PM
4. Place of submission & opening of tender : Baroda U.P. Bank, REGIONAL OFFICE, KANPUR DEHAT
5. Period for completion of work from order date : Maximum 30 days
6. Retention percentage : 10% (Ten percent) from final bill
7. Defect liability period : 12 months from the date of completion certificate issued by the Bank Architect.
8. Release of retention money : After 14 days from defect liability period.

12/03/22

SUBMISSION OF TENDER

The tenders are to be submitted in a sealed envelope and clearly superscribed as "Tender for FURNISHING & INTERIOR DECORATION WORK IN SATTI BRANCH OF BARODA U.P. BANK, REGIONAL OFFICE, KANPUR DEHAT.

- Bids must be submitted through hand to hand or through registered Post.
- The bid must contain two Envelopes as per procedure given below

FIRST ENVELOPE MUST CONTAIN ALL THE DOCUMENTS GIVEN BELOW:

1. Photo copy of PAN Number duly attested.
 2. Photo copy of GST Number duly attested.
 3. Registration certificate of both work i.e 'furniture & fixture work' and 'Electric & data cabling work
 4. All the documents should be self attested along with stamp of the Firm.
- IT MUST BE MENTIONED ON ENVELOPE "DOCUMENT SUBMITTED FOR BID OF FURNISHING & INTERIOR DECORATION WORK IN RASOOLABAD BRANCH".

SECOND ENVELOPE MUST CONTAIN ALL THE DOCUMENTS GIVEN BELOW:

SECOND ENVELOPE MUST CONTAIN only bid and nothing else.

- The price must be submitted on the prescribed format
- Price bid will not be accepted on any other format or document.
- It must be clearly mentioned "PRICE BID OF FURNISHING & INTERIOR DECORATION WORK IN RASOOLABAD BRANCH".

BOTH TWO ENVELOPES MUST BE KEPT IN THIRD SEALED ENVELOPE AND SUPERSCRIBED "BID FURNISHING & INTERIOR DECORATION WORK IN RASOOLABAD BRANCH".

GENERAL INSTRUCTIONS TO TENDERERS

1. The term "Contractor" shall mean the successful tenderer to whom the Contract shall be awarded.
2. The Contractor should quote the rates in figures and words. Any corrections or Over-writing should be initialed by the Contractor.
3. The Contractor should submit the tenders with seal, signature and date on each Page.
4. The Contractors should submit the cost of the main items as per tender specifications. Further modification after awarding of the contract shall be not allowed unless there is specific instruction by the Bank/Architect to change specifications.
5. The contract is time-bound and the works are to be completed within the time limit specified in the notice inviting tenders. This is a working office and the contractor has to work with no or minimum obstruction to its regular services.
6. The decision of Employer and the Architect is final and binding.
7. The contractor must submit registration certificate of both work i.e 'furniture & fixture work' and 'Electric & data cabling work' in separates envelope must be mention "Technical Bid for furnishing & electrical work".
8. The contractor must submit the tender for both work i.e 'furniture & fixture work' and 'Electric & data cabling work', Partially filled tender will be rejected.
9. **For Electrical fixtures and light points required as per drawings the contractor has to draw the wires from the existing positions of light points, power points wherever and if applicable. The contractor shall submit the certificate from electrical contractor holding required license/certification from directorate of electrical safety (U.P.)/competent authority of any other State.**

TERMS & CONDITIONS

1. Unless otherwise mentioned, all works are with no allowance for Lapse waste. Unless otherwise described or measured separately, price for all the items shall include all necessary straight & curved edges.
2. Any damage to the work before the site is handed over, is to be replaced or made good at the expense of the contractor to the entire satisfaction of the Architect/Bank.
3. Income Tax, Other Tax as applicable shall be deducted at source as per the Income Tax Act / Rules.
4. The quantities indicated are subject to change. The payment of the bill shall be made as per the actual measurement as certified by the architect but not exceeding the total value quoted in the tender form.
5. The Architect or any officer of the Employers will be free to inspect the work at the site during the period of execution. Any suggestion of change or modification to improve the quality of work will be carried out subject to prior approval of the competent authority of the employers and that of the Architect.
6. In case of failure to take up the work even after accepting the work order, or leaving the work incomplete, or for defective work not rectified, or violation of the terms and conditions, the contractor will be de-panelled/blacklisted.
7. For any item of work not covered or any unforeseen items of work, payment will be made according to the rates approved for similar nature of work, the costing done by the Architect, as per current PWD schedule of rates, or as per analysis of material cost, labour rate and profit to the Contractor at 10%. The Contractor must obtain prior approval in writing before undertaking such additional works.
8. The tenderers shall sign each & every page of the tender documents including the drawings attached here to.
9. The amount is to be quoted in figures as well as in words. In case the rates quoted in words and in figures are in variance, the amount written in words shall be taken as final.
10. The Contractor shall make their own arrangement at their own cost for storing materials, plants, tools etc. The employers will not be liable for security of the Contractor's materials.
11. No tools or plants will be issued by the bank.
12. The Employer / Architect reserves the right to accept or reject any tender without assigning any reason whatsoever and the said decision shall be final and binding upon the tenderer.
13. In case of breach of contract by the Contractor for slow progress of works or any other claim of damage, the Employer or the Architect may have the power to rescind the contract without furnishing further reasons thereof.
14. The Architect shall have the power to ask the contractor to furnish the sample/ color / test certificate from any Govt. /Authorized agent for any materials used/ to be used in the Works, the expenditure of which is to be borne by the Contractor.
15. The Employer shall be not be liable for any damages or compensation payable as a consequence of any accident or injury to any workman or other persons in the employment of the Contractor or any sub-contractor.
16. On completion of the Works, all rubbish, debris, materials, tools, Laborers, etc. to be removed by the contractor from the site and the contractor will hand over the site clean & clear & in usable condition within 3 days of completion of the works. Failing this, the employer may
17. Dispose the materials at the cost of the contractor.
18. In case of any dispute, the matter will be referred to the Regional Manager, Baroda U.P. Bank, Ragional Office Kanpur Dehat (UP).
19. Final Payment after completion of Project will be done with the certificate of Architect with deduction of retention money by the Bank.
20. The rates quoted in the tender shall exclude GST but include all excise tax, octroi & other taxes, no escalation of rates will be allowed under any circumstances.



FINANCIAL QUOTES
(To be submitted in sealed envelope)

**FURNISHING & INTERIOR DECORATION WORK IN REGIONAL
SATTI BRANCH OF BARODA U.P. BANK, REGIONAL OFFICE,
KANPUR DEHAT.**

Estimate for Furnishing works for Baroda U.P. Bank					
Branch at Satti					
Region - Kanpur Dehat					
1.No offsite prefabrication shall be allowed in any case. All fabrication shall be done at the site after getting the materials inspected by the architect					
2.No payment shall be made for any in completed or unsatisfactory work					
3.The Contractor should strictly follow the Booklet requirements of the Bank including the detailed drawings in the booklet. Any discrepancy between the booklet and the Specifications below should be brought to the notice of the Architect.					
4. List of material to be strictly as per the booklet.					
5. Cable Managers to be provided in the tables and Counters wherever required.					
6. All underframe should be properly treated with antitermite and waterproofing material					
7. All Locks in the drawers and doorsetc. should be of Godrej					
8. All keyboard Trays and Drawers to be on Channel Sliding Mechanism.					
*The contractor to follow the banks colour Coding. Any other specified colour to be superceded by the Banks Colour code.					
*All board to be BWP. Of approved brand and if written BWR it should be superceded by BWP board/ply.					
S.No.	Description of item	Unit	Qty.	Rate	Amount
1	Branch Manager Table with Side Table. Size -5'-6" (L) X 2'-6" (W) X 2'-6" (H) Providing and placing in position table made of phenol bonded 19mm thick commercial board with top front and sides finished in 1.0 mm Thick laminate and 12mm thick toughened glass on top. The front facade of the table to have 6 mm thick and 29 mm wide moulding. Every table shall be provided with a key board, drawer, and a cabinet with a shutter below W-375mm, H-750mm, Depth- 500mm. The storage unit shall consist of provision for C.P.U. 600X250 size Keyboard to be made of 19 mm thick commercial board and finished Drawers and a cabinet with a shutter below W-375mm, H-750mm, Depth-500mm. shall consist of 12 mm thick commercial board for bottom, sides and back of 19 mm thick phenol bonded commercial board with laminate in front and shall slide on tray system provision (sliding mechanism). All the units shall be provided with all the necessary hardware as approved by the Architect. such as knobs, handles, etc. All unexposed surfaces to have two coats of synthetic enamel paint with primer and base, all complete, specifications and directions of the engineer in charge.	NOS.	1.00		
2	Cash Cabin Partition Cash cabin partition made of both side 6.00mm commercial ply on kail wood frame section 50x35 mm and 1.00 mm mica, aluminum grill partition and mica laminated aluminum grill door complete with locks, top of cash cabin covered by aluminum grill. Including all locks & handles, door closer. Size of cash cabin 5.0 ft x 7 ft x 7.5 ft, and include Front of the cash Cabin to be glazed with 12 mm thick etching glass fixed in position by teak wood members complete to the satisfaction of the architect. The cash cabin to have night latches as per direction of the architect. This would also include decorative aluminium jali at the top of cash cabins fixed with teak wood members. (CASH CABIN TOP IS NOT INCLUDED IN THE MEASUREMENT).	Sq.ft.	205.00		
3	Cash Counter	Rft.	5.00		

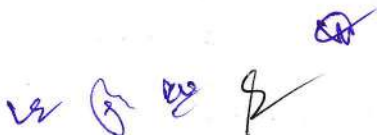
w G w P M

	Bank counter of approved design for cashier made of 19.00 mm commercial block board and mica 1.00 mm thick of approved brand and colour on front customer top and writing desk. Height of counter from customer side 114cm (45"). width of writing desk 75cm.(30") with provision of cupboard after every 1.20 mts made of 19.00 mm block board with 1.0 mm sunmica pasted on both side (inner and outer), and teakwood beading complete with quality polish finish. Mica pasted on both sides external & internal including all locks & handles with door closer .				
4	Front Counter	Rft.	10.00		
	Front counter made of 19.00 mm block board with table top at the height 75 cm and 80 cm wide sunmica 1.0 mm on top and cup board and sliding key board with provision of fixing of glass in front. Mica pasted on both sides external & internal including all locks & handles				
5	Cash Cabin-Aluminium Grill Top with teak Decorative Grill Partition).	SQFT	40.00		
	Providing and fixing of Aluminum grill work in cash counter top with all nessecary fixing support of 'L', 'H' and 'C' aluminium sections and etc. Cost include 'L', 'H' and 'C' aluminium sections, hardwares, tools, wastages, lead, lift, labour charges, oading, unloading charges, cutting, transport and etc. Complete as per instructions of the Architect.				
6	12 MM Glass on Front Counter & Cash Counter	Sq. ft.	32.00		
	12 MM float glass with rounded edges with etching as per the requirement of bank for Front counter (Height: 60 cms) (With teak wood frame 70 cm).				
7	Low Height Partition	Sq.ft.	210.00		
	Low Height Partition made of both sides 6 mm commercial ply laminated with 1.0 mm sunmica on Cheed Wood frame section 50.00 mmx30.00 mm with glass of 12 mm and door made of 100 x 25 cheed wood frame and ply and mica including all locks, handles & bolt, quality polish etc. Sample bank's low height partition. (LOW HEIGHT PARTITION HEIGHT 4'-0")				
8	Storage (Low Height)	Sq.ft.	30.00		
	Size-2'-6" highX 1'-6" deep				
	Ply Wood -19.0mm thick board for side top and door & back 6.0mm IS 303 with shutters, shelf 19.0mm ply				
	Shelf-19.0mm thick MR Grade IS303 ply				
	Handle-Brush finish stainless steel				
	Lock-Vijayan/Godrej				
	Internal surface zinc oxide polish and other required accessories instructed by Bank's Engineer / Architect.				
9	Column / Wall Panelling /Meter Boxing	Sq.ft.	155.00		
	Providing & fixing in position 2"x 2" kailwood frame and finished with 6 mm thk. Commercial ply on both sides with 1.0 mm thk. Laminate on top as per instruction of the Architect. column panelling only 7.5' height				

10	Notice Board	No.	1.00		
	Notice Board made of 19.00 mm board (size: 3'-0"x3'-0") laminated sides and covered by good quality Cherry Colour Velvet with attached Cheque Writing Desk (6"x6"x9") with attached Two Battens for Support, Sunmica Pasted on all sides.				
11	Writing Desk Including Suggestion Box and Cheque Drop Box	No.	1.00		
	Writing ledge of 19 mm Phenol bonded board as/design on 19 mm thick with pockets for slips of 6mm glass machine polished with separators completed to the satisfaction of the architect and the Drawing. The Writing ledge includes a Suggestion box below, cheque drop box and a notice board above complete to the satisfaction of the Architect.				
12	Hydraulic Door Closure. (to be Godrej)	No.	1.00		
	Providing and fixing of hydraulic door closure (Make-Godrej, Product Code-4539 or equivalent) for doors. It shall incorporate the following –				
-	Body manufactured from Aluminium extruded alloy machined to extreme accuracy.				
-	Rack and Pinion-made of machined alloy steel duly heat-treated.				
-	Adjustable closing speed.				
-	Suitable for right hand and left hand opening doors.				
-	Suitable for door/frame mounting.				
-	Suitable for door weight up to 60 kgs.				
-	Suitable for 180/100 degree door opening.				
	All complete to the satisfaction of the Architect.				
13	Three seater nickel polish bench in all respects	2.00	No		
	Providing & Placing three seater stainless steel benches with arms Confirming to grade 202, similar to HC IS, having nickel contents less than 1% perforated in regular shape 1cm x 1cm having perforation 49 X 49(seat and back), Hand rest on all three seats. Overall length of bench 60" X 64.5"(hand to hand) height, bottom to seat level 18" overall height 36" X 37.5" Weight 38.5-39.5 kgs Approx, plate width 16" seat.				
	Total Amount				
Note: All rates are excluding G.S.T.					

Seal

Sign of Furnisher/Contractor



**ESTIMATE FOR ELECTRICAL WORKS
FOR BARODA UP BANK, SATTI, RO KANPUR DEHAT**

S.NO.	PARTICULARS	Unit	Qty	Rate	Amount
	A - Light, Fan, 16A & 6A points - All switch & sokets shall be modular type complete with cover plate & GI/ MS box.				
1	<u>L&F Points+ Power points</u>				
1	Point Wiring for light, fan & exhaust fan points controlled thru modular switches complete with boxes & cover plate - The point wiring shall be carried with 3*1.5sq.mm FRLSH stranded Cu. Wires in 20mm PVC conduit pipe.The job also include circuit wiring with 3*1.5sq.mm FRLSH Cu stranded wires in 20mm OD PVC conduit from nearest TPN/ SPN Db to SDb. The conduit pipe shall be concealed in wall/ floor/ panelling/ partitions or above false ceiling as per requirement. The job shall be complete & to the entire satisfaction of the Bank. Each Switch board should be provided with suitable capacity fuses/ fuse indicator	Point	37		
	PVC Insulated FRLSH Copper wire (ISI Marked)- Skyline/ Finolex/ Havells/ Polycab				
	PVC Conduit- CAP/ BEC/ Sieko/ AKG				
	Modular Switch/ Sockets - ABB/ Legrand/ MK/ Anchor/ Elleys/ Roma				
2	6 A switch socket points on Sdb: S/F of 6A switch points with an additional indicator and 6Amp. modular Type switch & socket. It shall have 3*1.5sq.mm FRLSH stranded Cu. Wire as per requirement. The job shall be complete & to the entire satisfaction of the Bank.	Point	8		
	PVC Insulated FRLSH Copper wire (ISI Marked)- Skyline/ Finolex/ Havells/ Polycab				
	Modular Switch/ Sockets - ABB/ Legrand/ MK/ Anchor/ Elleys/ Roma				
3	Power Point: Raw power points on workstations / table / Printer etc with 3*2.5 Sq.mm FRLSH Cu. stranded wire laid in 20mm OD PVC pipe medium conduit pipe laid & concealed in wall/ floor/ panelling/ partitions or above false ceiling as per requirement. Each power point shall also consists of 1 nos of 16A , 2/3/5 pin sockets & 1 No., 16A Switch , wired together forming one point. The earth wire of green color only.	Point	8		
	PVC Insulated FRLSH Copper wire (ISI Marked)- Skyline/ Finolex/ Havells/ Polycab				
	PVC Conduit- CAP/ BEC/ Sieko/ AKG				
	Modular Switch/ Sockets - ABB/ Legrand/ MK/ Anchor/ Elleys/ Roma				
2	<u>Air Conditioning</u>				
1	AC Point: Providing AC points with circuit wiring with 3*4sq.mm FRLSH Cu stranded wires to be laid in 20mm PVC medium concealed in wall/ floor/ panelling/ partitions as per requirement. The work shall include S/F of MCB protected power unit for AC c/w 25A 2P MCB including proper connections. The job shall be complete & to the entire satisfaction of the Bank.	Point	0		
	PVC Insulated FRLSH Copper wire (ISI Marked)- Skyline/ Finolex/ Havells/ Polycab				
	PVC Conduit- CAP/ BEC/ Sieko/ AKG				
	MCB Protected Power unit c/w10kA MCB "C"- Havells/ L&T/ Siemens/ Schnider				

Handwritten signature and initials in blue ink.

3	Wiring with 3*4.0sq.mm FRLSH stranded Cu. wires laid in 20mm OD PVC/ flexible pipe heavy duty laid on floor & concealed in wall/ floor as per requirement to various voltage stabilizers. The job includes making connections at both ends with proper size of lugs to the entire satisfaction of the Bank.	m	0		
	PVC Insulated FRLSH Copper wire (ISI Marked)- Skyline/ Finolex/ Havells/ Polycab				
	PVC Conduit- CAP/ BEC/ Sieko/ AKG				
3	<u>UPS</u>				
	<u>Assumed 2nos.of 3KVA UPS with 1P input & 1P output (1working + 1Sb)</u>				
	The work shall also include cutting chase for conduits in the wall/ floor (Without damaging the building/wall) along with clamping the conduit at every 750mm interval & finally finishing the surface & matching the same with the existing surface. (Item 6, 7 & 8)				
1	<u>UPS supply regulating Changeover: S/F of 32A 4P changeover near Main Db for regulating UPS supply including proper connections. The incoming supply shall be tapped from 32A 3P MCB in main Db/ panel.</u>	Each	1		
	<u>When branch is closed this change over shall always remain in "ON" position. It will enable supply to UPS even when branch is closed in evening.</u>				
	Changeover Switch- C&S/ Havells/ L&T/ HPL				
2	S/ F of 4way SPN Db metallic c/w 32A 4P MCB including all connections complete in all respects to the entire satisfaction of the Architect/ bank.	Each	2		
	(1 near change over & 1 in UPS Room)				
	Distribution Boards Double door in steel sheet housing - ABB/ MDS/ Lexic/ Siemens/ HPL				
	MCB- 10kA "C" Characteristics L&T/ Siemens/ Schnider/ Legrand				
3	Incoming supply to UPS room: S/laying of 4 core 4sq.mm XLPE insulated armoured Copper conductor cable from main Panel to 4way TPN Db in the UPS room to be laid in medium duty 20mm PVC conduit/ pipe & run on surface or concealed in wall/ floor/ false ceiling including connections at both ends with lugs.	m	25		
	Cables Armoured/ Unarmoured - Finolex/ Polycab/ Havells/ RR Kabel/ KEI				
4a	S/ F of 4 way HTPN Db complete with 63A 4P MCB as incomer & 2*32 A 2P MCB as outgoing for branch MCB complete in all respects to the entire satisfaction of the Architect/ bank.	Each	0		
b	S/ F of 2way SPN Db c/w 32A 2P for regulating UPS input supply complete in all respects to the entire satisfaction of the Architect/ bank.	Each	2		
	Distribution Boards Double door in steel sheet housing - ABB/ MDS/ Lexic/ Siemens/ HPL				
	MCB- 10kA "C" Characteristics L&T/ Siemens/ Schnider/ Legrand				
5	Supply & laying of incoming & outgoing wiring to & from UPS with 3*4 sq.mm FRLSH stranded Cu. Wires laid in 20/25 mm flexible PVC pipe medium duty to UPS incoming & from UPS outgoing.	m	10		
	PVC Insulated FRLSH Copper wire (ISI Marked)- Skyline/ Finolex/ Havells/ Polycab				
	PVC Conduit- CAP/ BEC/ Sieko/ AKG				

W/ G 20 8 20

6	UPS Output Db in UPS Room - S/F of 8way SPN Db c/w 63A 2P MCB and 40A 2P for branch + 2*16A 2P MCB's for FDAS & CCTV as outgoing feeders including proper connections thru lugs. The job shall be complete & to the entire satisfaction of the Bank.	Each	1		
	Distribution Boards Double door in steel sheet housing - ABB/ MDS/ Lexic/ Siemens/ HPL				
	MCB- 10kA "C" Characteristics L&T/ Siemens/ Schnider/ Legrand				
7	UPS Output Distribution Boards				
	Location on RHS wall opposite pillar behind officer on counter - S/ F of 12way SPN Db c/w 32A 2P MCB and 3nos. 6A 1P (1 for cash + 2 for router) + 2*16A 1P (1BM+ 1for 2 officers on counters) MCB's complete in all respect and as required & to the satisfaction of the bank.	Set	1		
	Distribution Boards Double door in steel sheet housing - ABB/ MDS/ Lexic/ Siemens/ HPL				
	MCB- 10kA "C" Characteristics L&T/ Siemens/ Schnider/ Legrand				
8	Input Wiring for UPS Db from UPS room with 2*4.0+1*1.5 sq.mm FRLSH stranded Cu. wires laid in 20mm OD PVC pipe medium duty conduit pipe laid & concealed in wall/ floor/ panelling/ partitions or above false ceiling as per requirement. The rate should include the cost of all materials, labour, T&P, taxes & levies, scaffolding, shifting of furniture, carting away the debris and cleaning the floor etc. The job shall be complete & to the entire satisfaction of the Bank.	m	15		
	PVC Insulated FRLSH Copper wire (ISI Marked)- Skyline/ Finolex/ Havells/ Polycab				
	PVC Conduit- CAP/ BEC/ Sieko/ AKG				
9	Point wiring for UPS points on workstations / table for computers using 3*1.5 Sq.mm FRLSH Cu. stranded wire laid in 20mm OD PVC pipe medium conduit pipe laid & concealed in wall/ floor/ panelling/ partitions or above false ceiling as per requirement. Each point shall consist of 3 nos of 6A , 2/3 pin sockets & 1 No., 16A Switch , wired together forming one point. The earth wire of green color only.	Each	7		
	PVC Insulated FRLSH Copper wire (ISI Marked)- Skyline/ Finolex/ Havells/ Polycab				
	PVC Conduit- CAP/ BEC/ Sieko/ AKG				
	Modular Switch/ Sockets - ABB/ Legrand/ MK/ Anchor/ Elleys/ Roma				
4	<u>Distribution Mains</u>				
1	S/F of 3no.63A 415V Kit kats rewirable Porcelain fuse carrier & base c/w 4hole heavy duty terminals with shroud & cover including making of connection from electronic meter c/w wooden board etc.	Set	1		
LOM	SFU/ Fuses- HPL/ L&T/ Siemens/ GE Power/ Schnider (MG)				
2	ELECTRICAL PANEL/ Main controlling Db	No.	1		
	SITC of 4way Vertical TPN DB complete with 100A 4P MCCB as Incomer, 63A 3P MCB - 2Nos (1 HTPN+ 1UPS) and 25A 1P MCB- 3 Nos (1 Signage + 1 strong room + 1 spare) complete in all respects as required. The job shall be completed, to the satisfaction of the Bank Engineer/Architect.				

12/12/2019

LOM	Distribution Board single/ double door in steel sheet housing - ABB/ MDS/ Lexic/ Siemens/ HPL				
	MCCB- Legrand/ Schnider (MG)/ ABB/ Siemens/ L & T				
	MCB- 10kA "C" Characteristics L&T/ Siemens/ Schnider/ Legrand				
3	<u>Changeover</u> : S/F of 63A 4P changeover near Main Db for regulating DG supply including proper connections.	Each	1		
LOM	Changeover Switch- C&S/ Havells/ L&T/ HPL				
4	S/ laying of XLPE insulated armoured Copper Conductor cables including cost of lugs, cable glands etc. The cable should be laid on surface with proper clamps @750mm or laid & concealed in wall/ floor/ PVC Conduit/ false ceiling complete in all respect. The work also includes cutting chases for conduits in the wall/ floor (Without damaging the building) along with clamping the cable. All connection shall be done thru proper size of lugs				
	4c 10sq.mm for Pole & fuse Kit Kats	m	23		
	4c 6sq.mm from Main panel to HTPN Db	m	25		
LOM	Cables Armoured/ Unarmoured - Finolex/ Polycab/ Havells/ RR Kabel/ KEI				
	Cable Lugs- Dowells				
4	Hall Db - SITC of 6way HTPN Db complete in all respect as under- Siemens/ Havells/ Hagers or equivalent- Location rear wall in UPS space o/s Record room	Each	1		
	Incomer -63A 4P MCB				
	8no. 16A 1P-MCBs 10 KA for single PP (1 cash + 2 router+ 2BM, 2 for officers besides cash & 1 D /w)				
	4no. 10A 1P-MCB for L&F				
	3nos. 6A 1P-MCB for L&F				
	Blanking Plates - 3no.				
	All connections to be terminated thru lugs				
LOM	Distribution Board single/ double door in steel sheet housing - ABB/ MDS/ Lexic/ Siemens/ HPL				
	MCB- 10kA "C" Characteristics L&T/ Siemens/ Schnider/ Legrand				
5	Strong room controlling DP MCB - Circuit wiring with 3*1.5sq.mm FRLSH Cu stranded wires to be laid in 20 mm OD PVC medium duty laid & concealed in wall/ floor/ panelling/ partitions or above false ceiling as per requirement. The job also includes supply & fixing of 32A 2P MCB in 2way metallic box including connections with lugs. The job shall be complete & to the entire satisfaction of the Bank.	Job	1		
	PVC Insulated FRLSH Copper wire (ISI Marked)- Skyline/ Finolex/ Havells/ Polycab				
	PVC Conduit- CAP/ BEC/ Sieko/ AKG				
	MCB 10kA "C" Characteristics L&T/ Siemens/ Schnider/ Legrand				
6	Glow sign Board - Circuit wiring with 3*1.5sq.mm FRLSH stranded Cu. conductor to be laid in 20mm OD medium PVC conduit duly laid & concealed in wall/ floor/ panelling/ partitions or above false ceiling as per requirement.	m	12		
	PVC Insulated FRLSH Copper wire (ISI Marked)- Skyline/ Finolex/ Havells/ Polycab				
	PVC Conduit- CAP/ BEC/ Sieko/ AKG				

12/8/20 1/1

7	Timer - Supply of 40 A SP 230 V analog time switch panel(TIMER), in manufacturer sheet steel panel, fully prewired with all components like time switch, MCB, contactor, selector switch, indicating lamp.(1 for sign board)	Each	1		
	Timers- L&T/ Legrand/ Schnider/ Siemens/ GE				
5	DG Set Supply				
	S/laying of 4c 10sq.mm XLPE insulated Armoured Al. conductor cable c/w 1*6 sq.mm FRLSH Cu Stranded wire (earthwire) from proposed DG set to Changeover switch including its connections at both ends with lugs duly clamped with saddles @600mm with MS clamps (Made from 25x3mm MS flat) duly screwed with 32x8mm screws complete in all respect or if required buried in ground as per site conditions	m	14		
LOM	Cables Armoured/ Unarmoured - Finolex/ Polycab/ Havells/ RR Kabel/ KEI				
	Cable Lugs- Dowells				
6	Earthing				
1	Panel: S/burying of Dual pipe technology (Pipe in Pipe) earthing electrode having GI 80mm O/D pipe with 25 micron coating, 3metres long. The job also includes S/F of GI strip clamp with two holes (with SS/GI bolts & nuts) on the electrode & taking one lead of 4sq.mm Cu Stranded wire upto Main panel complete in all respects with guaranteed E/N voltage of less than 2 volts and resistance less than 1 ohms. The 4sq.mm Cu stranded wire shall be terminated on the earth bolt in panel. The distance between two earthing pits to be 10ft or more.	Job	1		
2	UPS: S/burying of Dual pipe technology (Pipe in Pipe) earthing electrode having GI 80mm O/D pipe with 25 micron coating, 3metres long. The job also includes S/F of GI strip clamp with two holes (with SS/GI bolts & nuts) on the electrode & taking one lead of 4sq.mm Cu Stranded wire upto 6way earthlink in UPS room complete in all respects with guaranteed E/N voltage of less than 2 volts and resistance less than 1 ohms. The 4sq.mm Cu stranded wire shall be terminated on a separate 6way earthlink. The connections for UPS earthing shall be taken from this earthlink. The distance between two earthing pits to be 10ft or more.	Job	1		
3	Supply & Fixing of 4sq.mm FRLSH Cu. Stranded wire on surface or in recess for loop earthing as required earthing to Db's or main panel as required.	m	30		
	PVC Insulated FRLSH Copper wire (ISI Marked)- Skyline/ Finolex/ Havells/ Polycab				
4	S/F of G I Strip 32x6mm earth clamp 200mm long c/w 6holes duly tapped	Each	1		
7	SUPPLY & FIXING LIGHT & FAN ITEMS				
1a	SITC of 2*22w LED Highly robust Industrial Box type Luminaire c/w 2nos. 22w LED tubes with built in driver, Double sided connection suitable for Surface, Wall and Conduit mounting c/w 2 nos. 20mm metallic conduit pipe for hanging complete in all respects. - Make as approved by Bank/ architect	Nos.	10		
1b	BEAM - SITC of above type fitting but on beam complete in all respects	Nos.	4		
	Light fittings - Philips/ Wipro/ Osram/ Havells/ Crompton Greaves				

Handwritten signatures and initials in blue ink.

2	S/F of Surface & wall mounted LED batten - Ultra-slim poly carbonate decorative LED batten with inbuilt heat sink, anti glare polycarbonate diffuser & energy efficient electronic driver 20W 1800 lumens - Make as approved by Bank/ architect	Each	10		
	Light fittings - Philips/ Wipro/ Osram/ Havells/ Crompton Greaves				
3	Angle holder complete in all respect with 8w LED lamp (for Toilet area)	Each	1		
	LED Bulb - Philips/ Wipro/ Osram/ Havells/ Crompton Greaves/ Syska				
	Angle holder - Legrand/ MK/ Anchor/ Elleys/ Roma				
4	S/F of metal body wall mounted fan 450mm sweep - Sturdy & heavy duty metallic Blades, Nickel Chrome plated guard -Make as approved by Bank/ architect	Each	2		
	Fans- Crompton/ Havells/ Bajaj/ Usha				
5	S/F of energy saving/ efficient ceiling fan 1200mm sweep double ball bearing type c/w Electronic modular regulator- Make as approved by Bank/ architect	Each	9		
	Fans- Crompton/ Havells/ Bajaj/ Usha				
6	Supply & Fixing of metallic fresh air fan 230mm sweep - Make as approved by Bank/ architect	Each	1		
	Fans- Crompton/ Havells/ Bajaj/ Usha				
	Telephone				
1	S/F on wall/ furniture/ partition recessed type modular telephone socket outlet (RJ-11) with mounting box & front plate complete with chase cutting, mending good etc. as required complete including Supply & laying of 2 pair 0.5mm dia. PVC insulated unarmoured telephone cables through rigid PVC conduit of suitable diameter from telephone junction box to telephone socket outlet including interconnection as required complete in all respects.	Each	3		
	Telephone Wire -Delton/ Skyline/ Finolex/ Rallison/ Batra Henley				
2	Supply & fixing of MDS box	Each	1		
	MDS box - Krone/ Pouyet/ TVS				
3	Supply & fixing of 10 pair box	Each	1		
	Telephone Tag Blocks- Krone/ Pouyet/ TVS				
	Data Cabling				
1	Supply & laying of 25mm OD medium duty PVC conduit c/w junction box, circular box, elbows, bends & other accessories as required by chase cutting on wall, through partition or over false ceiling. The work includes making good all damages to original finish, painting etc. as required.	m	45		
	PVC Conduit- CAP/ BEC/ Sieko/ AKG				
2	Supply & laying of CAT - 6e cables Giga speed thru pre-laid PVC conduit as directed by the consultant from Server to Switch, Switch to computer data socket including interconnections as required complete in all respects.	m	110		
	Cable - Digi Link/ Clipser/ National/ Polycab/ Lapp/ Finolex				

Handwritten signature or initials in blue ink.

3	Supply & Fixing of XL RJ 45 toolless information outlet Grey colour cat 6e Giga speed including interconnection with connectors (cost to be borne by contractor) as required complete in all respects.	Each	7		
	I/O- DigiLink/ Tyco (AMP)/ Schnider/ D- Link				
4	Supply & fixing of 7ft Grey colour Patch chord Giga speed Systimax/ D link make	Each	7		
	Patch Chord- DigiLink/ Tyco (AMP)/ Schnider/ D- Link				
5	Supply & fixing of 3ft Grey colour Patch chord Giga speed Systimax/ D link make	Each	7		
	Patch Chord- DigiLink/ Tyco (AMP)/ Schnider/ D- Link				
6	Supply & Fixing of 24 Port patch panel	Each	1		
	Patch Panel - DigiLink/ Schnider/ D- Link/ systemics		1		
7	Supply & Fixing of wall mounted Cyber rack 4U with front VNTD glass perforated front door and removable rear locking door, Fan Assembly - Cable entry from rear	Each	1		
	Rack - President/ Schnider/ Systemics				
8	Supply & fixing of 1U - PVC cable Manager with cover	Each	1		
	Krone/ Pouyet/ TVS				
TOTAL COST OF ELECTRICAL WORKS					
Note: All rates are excluding G.S.T					

Seal

Sign of Furnisher/Contractor

BARODA U.P BANK

LIST OF MATERIALS OF APPROVED BRAND AND/OR MANUFACTURER

1. The contractor shall use materials in their work subject to inspection, prior to dispatch, by Owner or his authorized representative of any materials not otherwise specified, shall be in Accordance with the following list. All materials not otherwise specified shall be in accordance With the latest Indian Standard Specifications, where such exists with prior approval of Owner /Architects. The contractor shall be bound to offer sample of materials, which are Claimed to be conforming to I.S Specification, for testing at an approved testing laboratory.
2. Contactor shall purchase all materials from the makers or their authorized stockist only. Necessary documentary evidences must be produced to the Owner or their authorized Representative on demand.
3. Contractor shall be bound to supply items or any make of the items as per the choice of the Owner/ Architects.
- 4.

A CIVIL / FURNISHING WORK

S.No	Description	Approved Brand/ Manufacturer
1.	Cement	M/s ACC, M/sPrism ,M/s Jaypee
2.	Wood	Kail wood
3.	Polish	MRF Polyurethane
4.	Termite treatment	Chloroporyphos 20% concentration / Dusban /Terminator pidlite make
5.	Soft Board	Celotex
6.	False Ceiling and Sections	Grid Tiles ---Armstrong, St Gobain Gypsum India,
7.	Aluminium sections	Hindalco, Jindal, Indal
8.	Vitrified Floor tiles	SOMANY,ASIAN,JOHNSON
9.	Block boards / Plywood/Flush doors	M/s Alstone , M/s Amulya No alternate brands from the same manufacturer allowed
10.	Laminates	M/s Green, M/s Merino, M/s Century, M/s Archid, M/s Airolam, 1.0 mm thick only.
11.	Hardware-(Aluminium)	Approved design, brand, quality & manufacture Allowed
12.	Hardware	ALL HARDWARE TO ONLY GODREJ
13.	Drawer/ cabinet Handless/locks	Dorset / Kitch/ Godrej/ hettich
14.	Magnet Catcher	Supreme, Excel
15.	Drawer / cabinet shutter Accessories	Ebbco, Hettich, Hafele
16.	Synthetic Enamel Paints, Distemper or Plastic paint Best quality of make as approved	Asian Paints Ltd), Berger Paints (India) Ltd.(Luxol), ICI, Nerolac.
17.	Venetian blinds/ verticals	Vista/sun
18.	Glazing	M/s Modiguard, M/s asahi india, Saint Gobain.
19.	Door Closer/ floor spring	Godrej, Dorma, Ozone
20.	Glue Adhesive	Fevicole, Century
21.	Door handles/ Locks	Godrej
22.	Screw	Excel GKW
23.	Glass brass bracket	Flora, Perfect
24.	POP bag or readymade work	Diamond (Super fine quality)
25.	GI section for Partitions, Panel, false ceiling	Same Company as of Gypsum Bard or Mineral Fibre tiles
26.	Film	Alkor, Garware, 3M
27.	Plants	
28.	Wire management holes	Twinkle
29.	Cement Board	E board, Bison,
30.	Vitrified floor tiles adhesive / Grout	Bal Endura, Dr. Fixit Fevimate XL with Polymer Modified Mortar, ROFF Granite tile adhesive

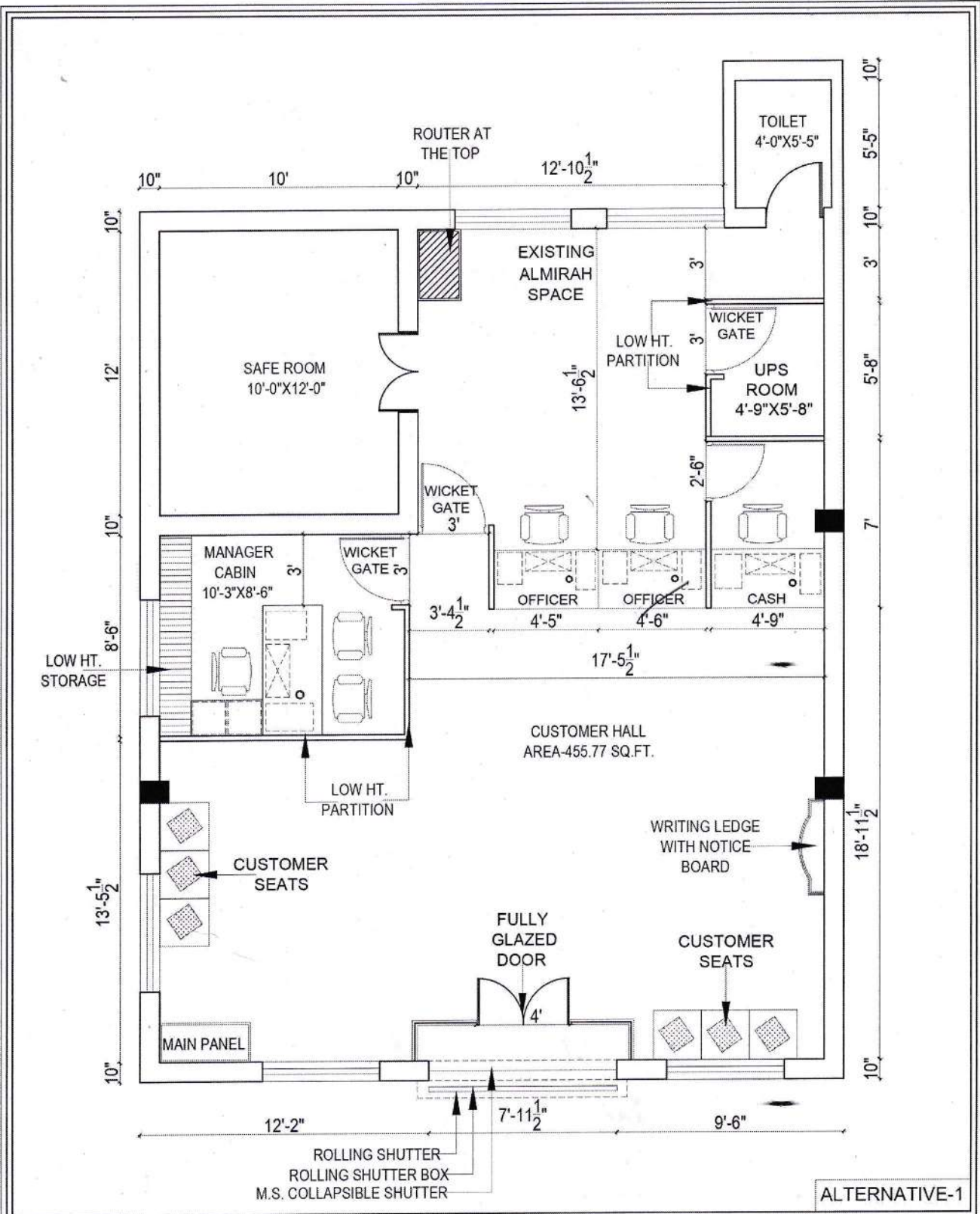
Handwritten signature and initials in blue ink.

31.	Texture	Spectrum , Heritage, Acro paint
32.	Upholstery	Raymonds
33.	Sanitary Fixtures	Cera, Hindware, Parryware
34.	GI Pipes and accessories	TATA
35.	CI Pipes and accessories	NECO
36.	Plumbing Fittings	Jaquar Continental series
37.	Ceramic Tiles	Kajaria (High Lighter Concept)
38.	Chairs / Sofa	Godrej, Delite / Debono

ELECTRICAL		
1.	MCCB	MDS legrands, ABB, GE, SIEMENS, as per Specification
2.	Changeover	Indo Asian/ HPL Socomec / GE/ Standard stangaurd/ as per Specification
3.	Distribution board	MDS / Standard / Indo Asian / HPL/ as per Specification
4.	MCB	MDS / Standard / Indo Asian / HPL/ as per Specification
5.	Cable	Gloster / Rallison / Incab / CCI/ as per Specification
6.	Copper wire	(ISI Marked)- Skyline/ Finolex/ Havells/ Polycab /as per Specification
7.	Switch / Socket / Call bell and accessories	ABB/ Legrand/ MK/ Anchor/ Elleys/ Romaas per Specification
8.	Electrical Light Fittings / Fixtures Complete	LED-Legrand/ MK/ Anchor/ Elleys/ Roma
9.	Wall Fan / Ceiling Fan / Exhaust Fan	Celling Fan =Bajaj / Crompton/ Havells/ Bajaj/ UshaWall Mounted Fan= Crompton/ Havells/ Bajaj/ Usha(Metalic Body)

NOTE: In case any make is mentioned in bill of quantity, it will take precedence over those given in the Given in the "Acceptable Makes of Materials" above.
The choice of make at a specific site will have to be consent with the project architect.

Handwritten signature and initials in blue ink.




DRG. TITLE:-
**REVISED LAYOUT PLAN FOR
 BARODA U.P. BANK
 BRANCH AT SATTI
 REGIONAL OFFICE
 KANPUR DEHAT.**

Drg. Title
**REVISED
 LAYOUT PLAN**

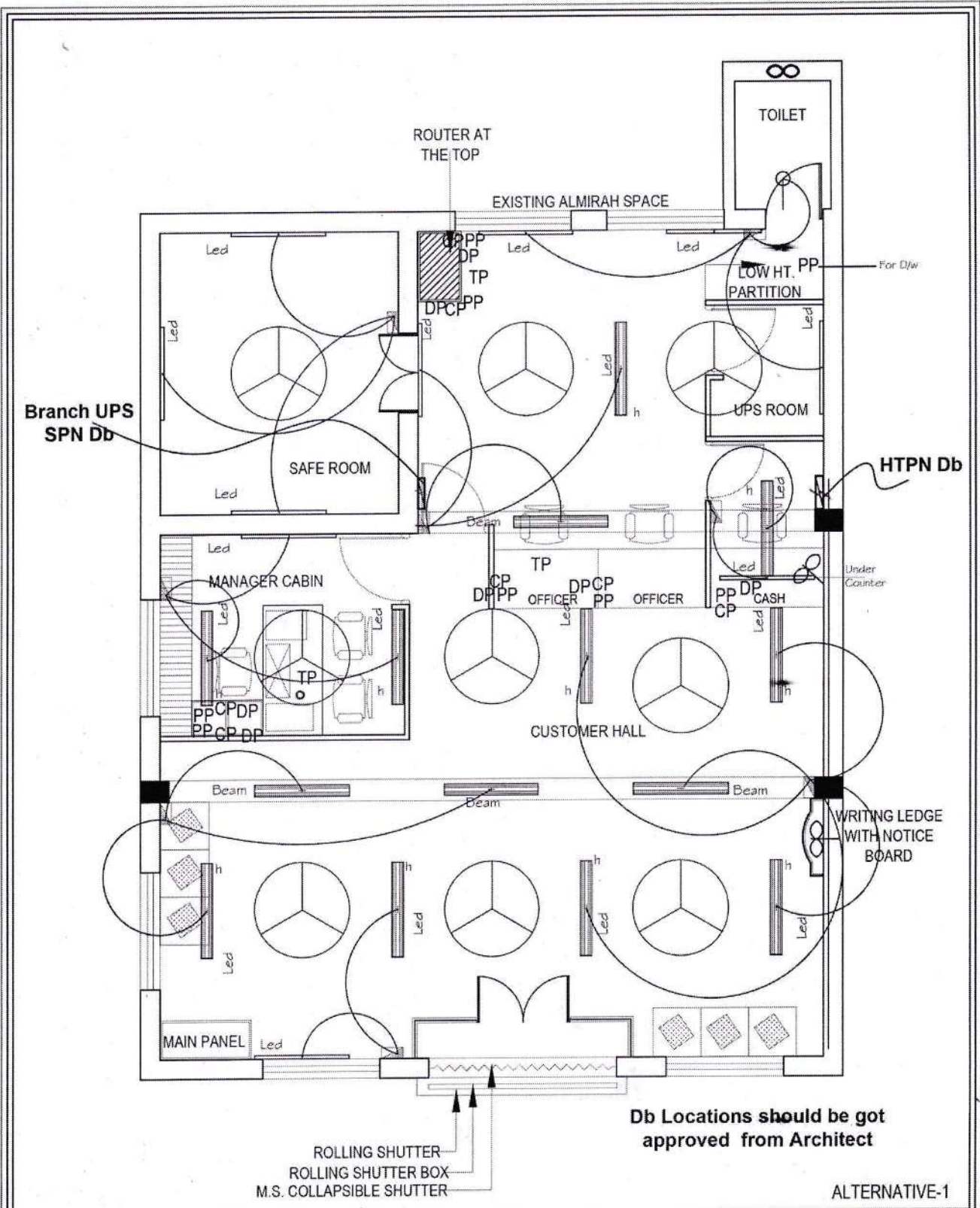
Date
DEC- 2021

North



Drawn By

Handwritten signature and date: 24/12/21



ALTERNATIVE-1

DRG. TITLE:-

ELECTRICAL PLAN FOR
BARODA U.P. BANK
BRANCH AT SATTI
REGIONAL OFFICE
KANPUR DEHAT.

Drq. Title
**ELECTRICAL
PLAN**

Date
DEC- 2021

North

Drawn By

Handwritten signature/initials in blue ink.