

TENDER NOTICE

Baroda U.P. Bank, Regional Office Jaunpur, intends to invite Tenders from furnishers/applicants for the proposed Furnishing/interior and electrical works of our Branch-JAUNPUR MAIN, at Jaunpur as per enclosed offer Bid/BOQ proforma.

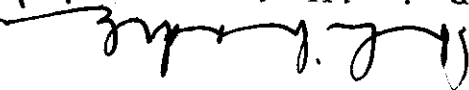
The completion period of work will be 21 days from the date of issue order. The work shall be executed under the supervision of our consulting Architect and as per specifications demonstrated in Offer Bid proforma/BOQ.

Offer Bid proforma/BOQ is attached with notice. Offer should be valid for a minimum period of 120 days from the last date of submission. No brokerage shall be paid. The sealed cover marked as Bid super scribing "FURNISHING WORK BID FOR JAUNPUR MAIN, BRANCH" be put in one sealed envelope and other sealed cover marked as Bid super scribing "ELECTRICAL WORK BID FOR JAUNPUR MAIN, BRANCH" be put in another one sealed envelope.

Both sealed envelope addressed and submitted to The Regional Manager, Baroda U.P. Bank Regional Office-Jaunpur, Pawan Plaza Civil Line Jaunpur U.P-222002 within 21 days from the day of publication of this advertisement /on or before 31-10-2022 by 05.00 P.M.

Any decision taken by bank at any point of time in connection with this process shall be final and conclusive and no claim or dispute from any quarter in that regard shall be entertained.

Date-07-10-2022
Enclosed: Offer Bid Proforma/BOQ


Regional Head
02/10/2022

4
8

S. NO.	PARTICULARS	Unit	Qty	Rate	Amount
	A-Electrical wiring (All switches to be Modular type - Anchor/Havells or equivalent approved by architect)				
	Light & Fan points				
1	Supply & Installation of concealed point wiring using 600V grade 3x1.5 sqmm copper conductor PVC insulated wires (with proper R,Y,B color code) pulled through heavy gauge 19mm PVC conduit pipe heavy duty concealed in wall/floor/partitions or above false ceiling as per requirement including 2 Nos. 2.5 sqmm circuit wires from the relevant DB and also including 1.5 sqmm green color copper earth wire and switch plate, switches, etc. as approved by the Bank's Engineer/Architect. All switch & sockets shall be modular type complete with cover plate & GI/MS box. The work shall also include for cutting chase for conduits and moulded boxes, if required, in the wall/floor interval & finally finishing the surface & matching the same with the existing surface. The rate should include the cost of all materials, labour, T&P, taxes & levies, scaffolding, shifting of furniture, carrying away the debris and cleaning the floor etc. The job shall be complete & to the entire satisfaction of the Bank.	Point	54		
a	Light points + A&F points including the cost of 6A switch	Point			
b	Ceiling Fan Point including the cost of 6A Switch along with electronic regulator	Point	16		
c	Wall Fan Point along with 6A switch	Point	3		
d	6A switch & Socket on SDB	Point	11		
2	RAW POWER POINT				
	Single Power Points - Supply & Installation of point wiring for Raw power plug points on workstations / table for computers using 2 X2.5 + 1x1.5 Sqmm copper conductor PVC sheathed flexible wire pulled through heavy gauge 19mm PVC conduit pipe heavy duty concealed in wall/floor/partitions or above false ceiling as per requirement. Each point consisting of 1 nos of 16A, 2/3/5 pin sockets & 1 No. 16A Switch wired together forming one point. The earth wire of green color only. All switch & sockets shall be modular type complete with cover plate & GI/MS box. The work shall also include for cutting chase for conduits and moulded boxes, if required, in the wall/floor interval & finally finishing the surface & matching the same with the existing surface. The rate should include the cost of all materials, labour, T&P, taxes & levies, scaffolding, shifting of furniture, carrying away the debris and cleaning the floor etc. The job shall be complete & to the entire satisfaction of the Bank.	Point	6		
3	AIR CONDITIONING				
	conductor (Finolex/Anchor/Skytone) in 19mm M.S conduit pipe heavy duty 18swg laid & concealed in wall/floor/partitions or above false ceiling as per requirement. The job includes supply & fixing of flush mounted 4in one appliance protector pre-wired IP 20 with factory fitted 25A, 2P MCB and 25A socket (Hagers/ Siemens/ABB). The rate should include the cost of all materials, labour, T&P, taxes & levies, scaffolding, shifting of furniture, carrying away the debris and cleaning the floor etc. The job shall be complete & to the entire satisfaction of the Bank.	Point	7		
3	MAIN INCOMING PANEL & DISTRIBUTION				
A	SITC of 100A kit kals fuse unit 3nos in wooden pada complete with 100amp, Neutral link complete in all respect as required.	Set	1		
	1 No for Meter				
	1 No for Panel to Outer Side Of Wall (For Generator Connection)				
B	Supply, Installation, Testing & Commissioning of main distribution board panel fabricated of 18swg (powder coated) comprising of indicator lamps 3 nos	Nos.	1		
	Voltmeter & ammeter (one each)				
	Rotary selector switches 2 nos for voltmeter & ammeter				
	Busbar (each of R/Y/B +N) copper 100 amp each				
	125 Amp MCCB (Siemens/L&T/ABB/Schneider) incoming 3P adjustable 25KA				
	Changeover TPN 100 amp for DG set (Havells/ABB/Sochomac)				
	Outgoing 63A 3P MCB's - 6 nos.				
	Outgoing 32Amp 2P MCB's - 6 nos.				
	Earth bus bar 25x5mm GI strip - 2nos. At the bottom.				
4	UPS				
A	Existing UPS to be use				
B	UPS Power Input System: SITC of 4way TPN Double door DB IP 42 horizontal Complete with 1no. Incoming 32A, 1P MCB and 3 x 32A 2P MCB's to regulate supply for UPS complete in all respect as required and to the satisfaction of the bank.	Set	1		

PROJECT - ESTIMATE FOR ELECTRICAL WORKS.

BANK - BARODA UP BANK

BRANCH - JAUNPUR

Architects, Engineers, Interiors & Landscape Designers,
 Shop no-1, First Floor, Jeevan Plaza
 Vram Khand-5, Gomti Nagar, Lucknow-226010
 E-Mail: bharatanassociates@gmail.com

8

S.NO.	PARTICULARS	Unit	Qty	Rate	Amount
E	UPS Output Power Distribution System: SITC of 12 way SPN DB Double door IP-43 Siemens make with 32A DP 10KA MCB and 09 nos. SP 10KA MCB complete in all respect and as required & to the satisfaction of the bank. Siemens/L&T/ MDS/ Schneider	Set	1		
G	Supply & fixing of 4nos. 6A switches & sockets (Modular type c/w MS/GI box & cover plate) complete with computer point circuit wiring with 2x2.5sq.mm + 1x 1sq.mm stranded Cu. Single core Copper conductor (Finolex/Anchor/RPG) to be laid in PVC conduit 1" dia/ vertical drops heavy duty laid & concealed in wall/ floor/ panelling/ partitions or above false ceiling as per requirement.	Per Node	11		
E-EARTHING	Existing Earthing to be use				
9					
F-FIXTURES & FITTINGS					
A	a) Supplying and fixing Philips make 36W LED FLAT PANEL 600x600 suitable for recess mounting, CRCA sheet, aesthetic looking, or eqv Philips/havells	Each	16		
B	Supply installation testing and commissioning of 1*20watt Batten type tubular LED light fitting with LEDs, driver, diffuser, and housing complete in all respects in UPS room and record w/c/bath room /suitable place with wipro /laguar)	Each	10		
C	b) Supplying and fixing Philips make or eqv 10 W LED round type downlighter (Philips/wipro /laguar)	Each	28		
E	i) Supply & installation of wall bracket fan 450 MM (Heavy duty/ high speed) Make Bajaj/crompton greaves/havells/Orient (to be supplied after consultation with architect/Electrical Engineer as per approved drawing)	Each	16		
F	g) Supply & fixing of the 1200 mm 48" Sweep Ceiling fan (Orient PSPO/crompton greaves/havells) with downward rod(below false ceiling), canopy etc. including of PVC flexible copper wire (white colour)(High speed) (Warranty Certificate is necessary)with downward rod, circular boxes, ball sockets, ceiling plates,suitable arm bracket etc. including connection with wire)White colour (WITH REGULATOR)	Each	3		
G	Supply and fixing LED Bulb 9 watt	Each	4		
12	L-DATA CABLING				
A	Supply & Fixing of XL RJ 45 toolless information outlet with Duplex face plate with dual connectors Grey colour cat be including cost of supplying & laying CAT 6e (as directed by Architect from Server to Switch, Switch to computer I/O data socket as required complete in all respects) in 25mm dia rigid PVC conduit (including laying of GI draw wire by chase cutting on floor, wall, through partition or over false ceiling. The data cabling pipe should be laid at a minimum distance of 3ft from pipes laid down for power distribution) including interconnection with connectors as required complete in all respects	Each	12		
B	Supply & fixing of 7ft Grey colour Patch chord Giga speed Systemax/ D link make	Each	12		
C	Supply & fixing of 3ft Grey colour Patch chord Giga speed Systemax/ D link make	Each	12		
D	S/F of 24Port Jack Panel fully loaded systemax make	Each	1		
E	S/F of 9 U wall mounted rack c/w fan etc as required	Each	1		
F	S/F of Cable Manager as required	Each	1		
	All Existing switches, Fans & tubelights which are in good condition to be use.				
	GRAND TOTAL AMOUNT				

DETAILED ESTIMATE

OF FURNISHING WORK FOR BARODA UTTAR PRADESH BANK JAVNPUR BRANCH.

Sl. No.	Description	Unit	Quantity	Rate	Amount
1	(a) Cash Cabin partition made of both side 6.00 mm commercial ply on Kail/Chir wood Sleeper frame of section 50x35 mm & 1.00 mm thick mica over the ply with aluminium grill partition make the provision for door shutter and fix the aluminium grill of cabin including cost of all material, labours tools & plants etc.	Per Sq.ft	230		
	(b) Fix the aluminium grill on the ceiling of Cash Cabin including cost of all labours, tools & plants etc.	Per Sq.ft	70		
2	Full height Cash Cabin with Glass Cash Cabin partition made of both side 6.00 mm commercial ply on Kail/Chir wood Sleeper frame of section 50x35 mm & 1.00 mm thick mica over the ply with fixing of 12.00 mm thick Glass including cost of all material,	Per Sq.ft	0		
3	Counter (Passing, Cash, Posting etc) Width of counter is 30", and height & Writing top of counter is 30", Public Counter 9"x9" with two drawer of size 16"x6"x18" with telescoping runner and one cup board of 14"x16"x18" all locking system and magnet 1.00 mm thick mica GL/VL at front portion of counter in vermillion color & grey color with teakwood beeding, 19.00 mm ply board Key Board C.P.U Stand with all counter as shown in map including cost of material, labours tools & plants etc(Shatabdi Co. Ply I.S.I mark and mica Greenlam/Vergolan)	Per Running ft	32		
4	Low/Full Height Partition Frame of Chirwood of size 2"x1.5", 6mm thick ply I.S.I Shatabdi on both side frame, 1.00 mm thick mica GL/VL I.S.I mark, teak wood beeding, Polish/Painting including cost of all material, labours, tools and plant etc with 12mm glass	Per Sq.ft	505		
5	UPS Partition (Bison Board) other specification same as above	Per Sq.ft	100		
6	Glass (A) 12.00 mm thick glass/Modi/ASI Co With name of bank(Plain Eching) including cost of all material, labours, tools and plant etc. (B) 12.00 mm thick glass/Modi/ASI Co With name of bank(colored Eching) including cost of all material, labours, tools and plant etc.	Per Sq.ft	65		
7	Suggestion Box With wall fitting (Size 12"x15"x6")	Per Piece	1		
8	Notice Board With wall fitting(Size 36"x36"x4")	Per Piece	1		
9	Public Writing Table- (Size 36"x24"x42") Teak wood, 19 mm board, 1.00 mm thick mica GL/VL teak wood beeding including cost of all material, labours tools and plant etc.	Per Piece	1		

4/8

Handwritten marks: a checkmark and the number '4'.

24	Designer MDF board column cladding with CNC Cutting and backing of Acrylic / Metalim, Jaali to be painted in white duco mpaint and LED strip lighting to be included in this rate. The support system to be as above.	Sq.ft	95		
23	Wall covering with 19mm ply, 1.00mm thick sumnica and teak wood including cost of all material, labour, tools and plants etc.	Per Sq.ft	265		
22	Public writing wall stand (including cost of fitting) 36"x16"x9" 19mm Board, 1.00 mm thick mica, teak wood bedding, Polish/Paint with fitting.	Per Piece	1		
21	Center Table with teak wood and 10mm glass ISI (size 48"x24"x18")	Per Piece	1		
20	Cheque drop box including cost of fitting (size 12"x15"x6")	Per Piece	1		
18	Filler covering with 19.00 mm tick ply, 1.00 mm tick sumnica, teak wood bedding including cost of all material, labors, tools & plants.	Per Sq.ft	220		
17	Door stopper ISI marked including cost of fitting	Per Piece	5		
16	Door latch ISI marked including cost of fitting	Per Piece	7		
15	Capsule Door closure ISI marked including cost of fitting	Per Piece	0		
14	Door closure ISI marked including cost of fitting	Per Piece	5		
13	Night latch lock ISI marked including cost of fitting.	Per Piece	4		
12	Handle lock ISI marked including cost of fitting (1)brass (2)stainless steel.	Per Piece	2		
11	Public settee size 60"x18"x18" Teak wood, 19 mm thick board, 1.00 mm thick mica GL/VL teak wood bedding including cost of all material, labour tools and plant etc. with 3" foam sleep well 32 density and covering cloth of superior quality.	Per Piece	2		
10	Public Writing Table Round Shape: (Size 36"x36"x42") Teak wood, 19 mm board, 1.00 mm thick mica GL/VL teak wood bedding including cost of all material, labour tools and plant etc.	Per Piece	0		

OF FURNISHING WORK FOR BARODA UTTAR PRADESH BANK JAUNPUR BRANCH.

DETAILED ESTIMATE

Ref No.: BA/BUPB/ROJ/2022 Dated 07-10-2022

Bharat and Associates,
 Architects, Engineers, Interiors &
 Landscape Designers,
 Shop no-1, First Floor, Jeevan Plaza
 Vram Khand-5, Gomti Nagar, Lucknow-226010
 E-Mail: bharatandassociatesiko@gmail.com

DETAILED ESTIMATE

OF FURNISHING WORK FOR BARODA UTTAR PRADESH BANK JAUNPUR BRANCH.

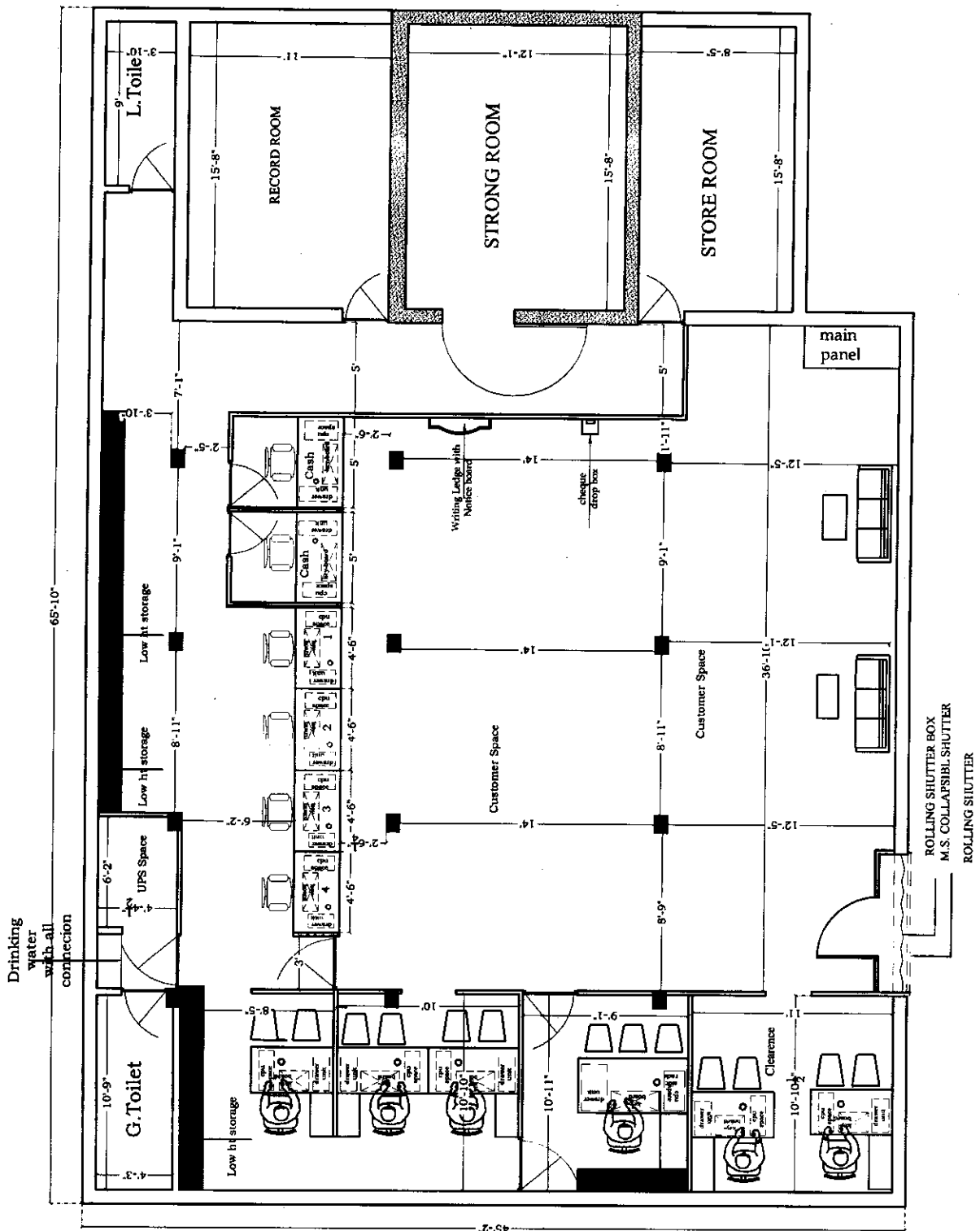
Sl. No.	Description	Unit	Quantity	Rate	Amount
25	Aluminum Section Door with Glass Aluminum entrance door with partition made of aluminum section of Hindalco/ Jindal 1.75"x1.75" and 1.5 m with 5mm thick glass with door made of door section 1.75" x 1.75" and door bottom 4.5"x1.75" (114mmx44mm) with 5mm glass complete with lock, door closures, tower bolt and handles etc.	Per Sq.ft	120		
26	Raise Ceiling(Arstrong)	Sqft	1440		
27	Raise Ceiling Works (Gypsum) with Cove Design Providing and fixing Ecophon/"AMF-Star" or equivalent approved Regular type mineral ceiling Tiles Edge :- Microlook, GRIDS:- Silhouette 15mm.Black/White reveal grids system as per the manufacturers' specification of Mineral Fiber ceiling including suspension system fittings & frame work as per manufacturer's specifications				
28	Wooden table with side rack : (60"x30"x30") 19 M.M Board, 1 pc drawer, polish paint with 8 M.M Glass top.	Per Piece	1		
29	Wooden table with side rack : (54"x30"x30") 19 M.M Board, 1 M.M. Sunmika of ISI mark, key board side cup Board, 1 pc drawer, polish paint with 8 M.M Glass top.	Per Piece	5		
30	Full height storage / low height storage / back storage (credenza) Providing and fixing in position full height storage / low height storage / back storage (credenza) as shown in drawing no. (8) (9) and (10) respectively using plywood of required thickness finished sides shall be finished with white enamel paint as detailed therein. The storage units shall be provided with handles (stainless steel finish) as per approval of the project consultant/bank.	Sft	180.00		
Grand Total:					0

PRODUCED BY AN AUTODESK EDUCATIONAL PRODUCT

PROPOSED LAYOUT PLAN OF
BARODA UP GRAMIN BANK
MAIN JAUNPUR OPP. 1

PRODUCED BY AN AUTODESK EDUCATIONAL PRODUCT

BHARAT & ASSOCIATES
FLAT NO. 119, 4TH FLOOR, BLOCK J, INDRAPRASTH
APARTMENT RATANLALNAGAR, KANPUR.
7572003109, 7572003101, 7572003110.



PRODUCED BY AN AUTODESK EDUCATIONAL PRODUCT

PRODUCED BY AN AUTODESK EDUCATIONAL PRODUCT