



बड़ौदा यू.पी. बैंक
Baroda U.P. Bank

ROKAND/03/P&E/2022-23/179

Date 06-01-2023

SHORT TERM TENDER NOTICE
(For Empanelled Furnishers & Interior Decorators only)

INTERIOR DECORATION WORK IN MOHAMMADPUR MALASA
BRANCH OF BARODA U.P. BANK

IMPORTANT DATES

DATE OF ISSUE OF TENDER NOTICE	06.12.2022
LAST DATE AND TIME OF SUBMISSION OF TENDER	27.01.2023 up to 05:00 P.M.
DATE OF OPENING OF TENDER (FINANCIAL BID)	29.01.2023 at 03:00 P.M.

Baroda U.P. Bank
Regional office Kanpur Dehat
Nabipur, Jainpur Kanpur Dehat
209311(U.P.)

NOTICE INVITING TENDER

Sealed item rate short term tenders are invited on behalf of the Regional Manager, Baroda U.P. Bank, from the Furnishers & Interior Decorators having valid Empanelment with the Baroda U.P. Bank for the work of INTERIOR DECORATION WORK IN MOHAMMADPUR MALASA BRANCH OF BARODA U.P. BANK, Regional Office Kanpur Dehat.

1. Issue of tender documents : 06/01/2023 to 27/01/2023
2. Last date of receipt of tender documents : 27/01/2023 up to 5.00 PM
3. Date of opening of tender documents : 29/01/2023 at 03.00 PM
4. Place of submission & opening of tender : Baroda U.P. Bank, REGIONAL OFFICE, KANPUR DEHAT
5. Period for completion of work from order date : Maximum 30 days
6. Retention percentage : 10% (Ten percent) from final bill
7. Defect liability period : 12 months from the date of completion certificate issued by the Bank Architect.
8. Release of retention money : After 14 days from defect liability period

(Handwritten signature)



SUBMISSION OF TENDER

The tenders are to be submitted in a sealed envelope and clearly superscribed as "Tender for FURNISHING & INTERIOR DECORATION WORK IN MOHAMMADPUR MALASA BRANCH OF BARODA U.P. BANK, REGIONAL OFFICE, KANPUR DEHAT.

- **Bids must be submitted through hand to hand or through registered Post.**
- **The bid must contain two Envelopes as per procedure given below**

FIRST ENVELOPE MUST CONTAIN ALL THE DOCUMENTS GIVEN BELOW:

1. Photo copy of PAN Number duly attested.
 2. Photo copy of GST Number duly attested.
 3. Registration certificate of both work i.e 'furniture & fixture work' and 'Electric & data cabling work
 4. All the documents should be self attested along with stamp of the Firm.
- IT MUST BE MENTIONED ON ENVELOPE "DOCUMENT SUBMITTED FOR BID OF FURNISHING & INTERIOR DECORATION WORK IN MOHAMMADPUR MALASA BRANCH".

SECOND ENVELOPE MUST CONTAIN ALL THE DOCUMENTS GIVEN BELOW:

SECOND ENVELOPE MUST CONTAIN only bid and nothing else.

- The price must be submitted on the prescribed format
- Price bid will not be accepted on any other format or document.
- It must be clearly mentioned "PRICE BID OF FURNISHING & INTERIOR DECORATION WORK IN MOHAMMADPUR MALASA BRANCH".

BOTH TWO ENVELOPES MUST BE KEPT IN THIRD SEALED ENVELOPE AND SUPERSCRIBED "BID FURNISHING & INTERIOR DECORATION WORK IN MOHAMMADPUR MALASA BRANCH".

GENERAL INSTRUCTIONS TO TENDERERS

1. The term "Contractor" shall mean the successful tenderer to whom the Contract shall be awarded.
2. The Contractor should quote the rates in figures and words. Any corrections or Over-writing should be initialed by the Contractor.
3. The Contractor should submit the tenders with seal, signature and date on each Page.
4. The Contractors should submit the cost of the main items as per tender specifications. Further modification after awarding of the contract shall be not allowed unless there is specific instruction by the Bank/Architect to change specifications.
5. The contract is time-bound and the works are to be completed within the time limit specified in the notice inviting tenders. This is a working office and the contractor has to work with no or minimum obstruction to its regular services.
6. The decision of Employer and the Architect is final and binding.
7. The contractor must submit registration certificate of both work i.e 'furniture & fixture work' and 'Electric & data cabling work' in separates envelope must be mention "Technical Bid for furnishing & electrical work".
8. The contractor must submit the tender for both work i.e 'furniture & fixture work' and 'Electric & data cabling work', Partially filled tender will be rejected.
9. **For Electrical fixtures and light points required as per drawings the contractor has to draw the wires from the existing positions of light points, power points wherever and if applicable. The contractor shall submit the certificate from electrical contractor holding required license/certification from directorate of electrical safety (U.P.)/competent authority of any other State.**

Handwritten signature and initials in blue ink.



TERMS & CONDITIONS

1. Unless otherwise mentioned, all works are with no allowance for Lapse waste. Unless otherwise described or measured separately, price for all the items shall include all necessary straight & curved edges.
2. Any damage to the work before the site is handed over, is to be replaced or made good at the expense of the contractor to the entire satisfaction of the Architect/Bank.
3. Income Tax, Other Tax as applicable shall be deducted at source as per the Income Tax Act / Rules.
4. The quantities indicated are subject to change. The payment of the bill shall be made as per the actual measurement as certified by the architect but not exceeding the total value quoted in the tender form.
5. The Architect or any officer of the Employers will be free to inspect the work at the site during the period of execution. Any suggestion of change or modification to improve the quality of work will be carried out subject to prior approval of the competent authority of the employers and that of the Architect.
6. In case of failure to take up the work even after accepting the work order, or leaving the work incomplete, or for defective work not rectified, or violation of the terms and conditions, the contractor will be de-panelled/blacklisted.
7. For any item of work not covered or any unforeseen items of work, payment will be made according to the rates approved for similar nature of work, the costing done by the Architect, as per current PWD schedule of rates, or as per analysis of material cost, labour rate and profit to the Contractor at 10%. The Contractor must obtain prior approval in writing before undertaking such additional works.
8. The tenderers shall sign each & every page of the tender documents including the drawings attached here to.
9. The amount is to be quoted in figures as well as in words. In case the rates quoted in words and in figures are in variance, the amount written in words shall be taken as final.
10. The Contractor shall make their own arrangement at their own cost for storing materials, plants, tools etc. The employers will not be liable for security of the Contractor's materials.
11. No tools or plants will be issued by the bank.
12. The Employer / Architect reserves the right to accept or reject any tender without assigning any reason whatsoever and the said decision shall be final and binding upon the tenderer.
13. In case of breach of contract by the Contractor for slow progress of works or any other claim of damage, the Employer or the Architect may have the power to rescind the contract without furnishing further reasons thereof.
14. The Architect shall have the power to ask the contractor to furnish the sample/ color / test certificate from any Govt. /Authorized agent for any materials used/ to be used in the Works, the expenditure of which is to be borne by the Contractor.
15. The Employer shall be not be liable for any damages or compensation payable as a consequence of any accident or injury to any workman or other persons in the employment of the Contractor or any sub-contractor.
16. On completion of the Works, all rubbish, debris, materials, tools, Laborers, etc. to be removed by the contractor from the site and the contractor will hand over the site clean & clear & in usable condition within 3 days of completion of the works. Failing this, the employer may
17. Dispose the materials at the cost of the contractor.
18. In case of any dispute, the matter will be referred to the Regional Manager, Baroda U.P. Bank, Regional Office Kanpur Dehat (UP).
19. Final Payment after completion of Project will be done with the certificate of Architect with deduction of retention money by the Bank.
20. The rates quoted in the tender shall exclude GST but include all excise tax, No escalation of rates will be allowed under any circumstances.


(D.P Gupta)
Chief Manager





Estimate for Furnishing, Electrical and Air Conditioning Piping works for Baroda U.P. Bank

Branch at Mohammadpur malasa, Regional Office Kanpur Dehat.

- 1.No offsite prefabrication shall be allowed in any case. All fabrication shall be done at the site after getting the materials inspected by the architect
- 2.No payment shall be made for any in completed or unsatisfactory work
- 3.The Contractor should strictly follow the Booklet requirements of the Bank
- 4.List of material to be strictly as per the booklet.
- 5.All underframe should be properly treated with antitermite and waterproofing material
- 6.All Locks in the drawers and doorsetc. should be of Godrej
- 7.Etching to be provide as per Banks Design and Specification.

S.No.	Item	Units	Qty.	Rate	Amount
1	False Ceiling Works Gypsum	Sqft	540.00		
	Providing and fixing Gypsum False Ceiling which includes USG Knauf ST50 Perimeter Channels {Material-IS277,120GSM galvanizing coating both sides inclusive} of size 0.50mm thick (having One Flange of 20mm and another flange of 30mm and a web of 27mm) along with perimeter of ceiling, screw fixed to brick wall / partition with the help of Nylon sleeves and screws at 600mm centers. Then suspending USG Knauf ST50 intermediate channels {Material-IS277,120GSM galvanizing coating both sides inclusive} of size 45mm (0.9mm thick with two flanges of 15mm each) from the soffit at 1220mm centers with USG Knauf ST50 ceiling angle of width 25mm X 10mm X 0.50mm thick fixed to Soffit with soffit cleat and Anchor fasteners. USG Knauf ST50 Ceiling section of 0.50mm (Material-IS277,120GSM galvanizing coating both sides inclusive) thick having knurled web of 51mm and two flanges of 27mm each with lips of 10.5mm are then fixed to the intermediate channel with the help of connecting clips and in direction perpendicular to the intermediate channel at 457 mm centers. Gypsum board facia of 150 mm high as per the direction of the Architect.				
	USG Knauf 12.5mm thick Standard Plasterboard (conforming to IS 2095:2011, 3rd party certified is then screw fixed to ceiling section with 25mm dry wall screws at 230mm centers. Screw fixing is done mechanically with drilling machine with suitable attachment. Finally tapered edges of the Standard Plasterboards are to be jointed and finished so as to have a flush look which includes filling and finishing with Premix Jointing compound, joint paper tape (Confirming to ASTM C475) suitable for Standard board (as per recommended practice of manufacturer) . Rate to be included all kinds of profiles and cut outs required for light fixtures, Speakers, Smoke detector, trap doors and AC grill in the ceiling.				
	No additional payment to be payable for grooves, cut-outs, additional supports for electrical / HVAC& all services ,etc. No deduction of electrical fixtures / AC diffuser / grills etc. from payable ceiling area.i				
	The ceiling fixing should adhere to the manufacturers instructions				
2	Mineral Fiber ceiling with UNI T 15mm T Grid & 16mm MPRESSIONS™ ClimaPlus™ Ceiling tiles (600x600mm)	Sqft	396.00		
	This includes USG Knauf UNI T 15mm grid Wall angle of 19mmx 19mm x 0.40mm shall be screw fixed to brick wall/partition with the help of approved screws at 600mm centres. Then suspending USG Knauf UNIT 15mm Main T grid of 15mm x 38mmx0.30mm of length 3600mm is hung with USG Knauf adjustable level clips 80x30x0.70mm & 4mm diameter GI rod which are connected to USG Boral Soffit Cleat 37mmx27mmx1.6mm and 8mm dia 40mm long Anchor Fasteners @1200mm centres or as approved from RCC Slab. The USG Boral UNIT 15 Cross T of 15mm x 38mmx0.30mm of 1200mm length shall be interlocked between main T Grid at 600mm centres to form 1200 x 600mm modules. 600 x 600mm modules to be formed by click fitting USG Knauf UNIT 15 Cross T of 15mm x 38mm of 600mm length centrally between the 1200mm cross T's Then 16mm thick IMPRESSIONS™ ClimaPlus™ ceiling panel having FLB edge of size 595x595 shall be placed into the above grid of size 600x 600 mm.This ceiling panel confirms to ASTM E84 surface burning characteristics. (Class A, Flame Spread: 25 & Smoke developed: 50). The Ceiling panel provides NRC 0.60, CAC minimum: 33. Light Reflectance: 0.84, recycled content -45% Thermal Resistance: R- 0.3 & can withstand Relative Humidity up to RH 99% (limiting conditions -Max 49 degree C/99%RH). The front & back side of the tile has anti- Microbial ZOE coating				
3	Main Door with Fixed Aluminium Glazing Powder coated of Bank colour coding. (Only 8'-6" to be measured for payment purpose).	Sqft	135.00		



	Door Size-4'-0" X 7'-0"				
	Frame- 6"X2" Aluminium powder coated frame (18 gauge) (All four sides) with approved colour Bank's Engineer/Architect				
	Glass 5.0/ 6.0mm thick Plane glass with mat film as approved by architect/bank engineer)				
	Floor Spring-Heavy Duty appropriate size (Hyper/Everite make)				
	Handle-'D' Type stainless steel finish both sides with push/pull indication)				
4	Meter Boxing (Only front face to be measured for payment purpose)	Sqft	40.00		
	Manufacturing, supplying and fixing box type meter storage with overall depth of 1'6" and height as per the size of the meter. comprising of the following.				
	19mm BWP block board hinged double shutter, height as size of the panel with around beadings 3/4" x 1/2", powder coated handles, piano hinges, magnetic ball catches, lock, locking arrangement, tower bolts etc., all as per directions.				
	All visible surfaces to be fixed with 1.0mm thick lamination sheet with matching grains & grooves as per instructions				
	All internal & rear surfaces to be painted with two coats of enamel paint over a coat of primer/putty as directed to get a smooth finish and 4nos-6" wide Powder Coated 2 nos Aluminium Aircon Louvers.	Sqft	85.00		
5	Full Height (Unglazed Partition (A.C.Area Block Partition)				
	Unglazed Partition (ceiling height only considered and above necessary ceiling supports to be provided) with Anodized Aluminium frame work, heavy sections (2mm thickness) of 2"x1.5" section, spacing of 2'0"x2'0" on bothsides and covered with 9mm thick BWP plywood finished with 1mm thick laminate of approved colour borders on both sides and approved colour laminate for base colour on both sides. Above 1'0"/2'6"/3'0" height partition, fixed with 12mm bevelled glass with sticker frosted film sticking over the glass of approved pattern and design. Rate to include providing cutouts and provisions to run electrical conduits, switches, etc. Cost include wastages, transports, loading, unloading charges, labours, materials, tools, lead, lift and etc. Complete as per drawings and instructions of the Architect.				
	The job shall also include for provision of laying conduits, switch boxes etc. The erection of partition shall include for expansion bolts cleats, clamps bolts, nuts, screws, rivets and other accessories, all complete up to the satisfaction of the Architect.				
	The partition and doors shall have hinges floor springs / sliding arrangement/ hydraulic door closer, mortise locks with handle set (Godrej, Dorma make all), etc. The rate shall include cost of all materials, labour, T&P, wastages, etc. required for proper completion of work, all complete to the satisfaction of the Architect.				
6	Drain Water Piping Constructed out of PVC Hard Pipes, fitting, accessories, bends, elbows, tees, hanger, support, anchors, ISI approved Finolex/Prince Make (32mm)	RM	52.00		
7	Copper Piping Refrigerant along with insulator Piping for Hi Wall /1.0/1.5 ton, 1/2 and 1/4 Soft Copper Refrigerant piping with complete fitting, elbows bends supporting arrangements Nissan, Merchant, MET tube, Totaline tube, pressure tested tube and S.I.T.C. of 12.5 Sq.mm. & 6.25 Sq.mm. dia. Copper refrigerant pipe with foam insulation between Indoor & Out door units with breaking of wall for making hole wherever required For Split Air- Conditioners. And S.I.T.C. of 19 mm dia & 16 mm dia Copper Refrigerant Pipes with Foam insulation between Indoor & Out door units. with breaking of wall wherever required for 2-3 Tr Cassette/ Inverter Air conditioners.	Rm	85.00		
8	S.I.T.C. of 4 core Copper conductor flexible cable between Indoor & Outdoor Unit through holes made as above	Rm	90.00		
A	TOTAL				
ESTIMATE FOR ELECTRICAL WORKS					
1	A - Light, Fan, 16A & 6A points - All switch & sokets shall be modular type complete with cover plate & GI/ MS box.				



	The work shall also include for cutting chase for conduits and moulded boxes, if required, in the wall/ floor (Without damaging the building/wall) along with clamping the conduit at every 750mm interval & finally finishing the surface & matching the same with the existing surface. Item 1,3, 4 & 5				
	The rate should include the cost of all materials, modular switch complete with MS box & cover plate, labour, T&P, taxes & levies, scaffolding, shifting of furniture, carting away the debris and cleaning the floor etc				
1	Primary Point Wiring for light points controlled thru modular switches complete with boxes & cover plate - The point wiring shall be carried with 3*1.5sq.mm FRLSH stranded Cu. Wires in 20mm PVC conduit pipe concealed in wall/ floor/ panelling/ partitions or above false ceiling as per requirement. The job shall include cost of circuit wiring with 3*1.5sq.mm FRLSH Cu stranded wires in 20mm OD PVC Pipe from nearest TPN Db to controlling SDb. The job shall be complete & to the entire satisfaction of the Bank. Each Switch board should be provided with suitable capacity fuses/ fuse indicator	Point	15.00		
	Secondary Light Point				
2	Same as above but looped from PP with 3*1.5sq.mm FRLSH stranded Cu. Wires in 20mm PVC conduit pipe concealed in wall/ floor/ panelling/ partitions or above false ceiling as per requirement. The job shall be complete & to the entire satisfaction of the Bank.	Point	11.00		
3	6 A switch socket points on Sdb: S/F of 6A switch points with an additional indicator and 6Amp. modular Type switch & socket. It shall have 3*1.5sq.mm FRLSH stranded Cu. Wire as per requirement. The job shall be complete & to the entire satisfaction of the Bank.	Point	5.00		
2	Power Point Wiring				
1	Primary Power Point: Raw power points on workstations / table / Printer etc using 3*4 Sq.mm FRLSH Cu. stranded wire laid in 20mm OD PVC pipe medium conduit pipe laid & concealed in wall/ floor/ panelling/ partitions or above false ceiling as per requirement. Each power point shall also consists of 1 nos of 16A , 2/3/5 pin sockets & 1 No., 16A Switch , wired together forming one point. The earth wire of green color only.	Point	7.00		
3	Air - Conditioning				
1	AC Point: Providing AC points with circuit wiring with 3*4sq.mm FRLSH Cu stranded wires to be laid in 20mm PVC medium concealed in wall/ floor/ panelling/ partitions as per requirement. The work shall include S/F of MCB protected power unit for AC c/w 25A 2P MCB including proper connections. The job shall be complete & to the entire satisfaction of the Bank.	Each	4.00		
2	AC 4way HTPN distribution Db double door suitable for MCB as incomer - Location as per side	Each	1.00		
	Incomer - 63A 4P MCB				
	5nos. 32A 1P-MCBs 10kA for AC's excluding Manager AC				
	Blanking Plates -				
	(Manager thru LF Db's)				
LOM	Distribution Boards Double door in steel sheet housing - ABB/ MDS/ Lexic/ Siemens/ HPL				
	MCB- 10kA "C" Characteristics L&T/ Siemens/ Schnider/ Legrand				
3	S/ laying of XLPE insulated armoured Copper Conductor cable including cost of lugs, cable glands for AC VTPN Db.				
	4c x 10sq.mm for VTPN Db	Mtr.	30		
	Cables Armoured/ Unarmoured - Finolex/ Polycab/ Havells/ RR Kabel/ KEI				
4	UPS				
1	UPS supply regulating Changeover: S/F of 63A 4P changeover near panel for regulating UPS supply including proper connections. The supply shall be tapped from 63A 4P MCB in panel.	Each	1		
	When branch is closed this change over shall always remain in "ON" position. It will enable supply to UPS even when branch is closed in evening.				
	Changeover Switch- C&S/ Havells/ L&T/ HPL				



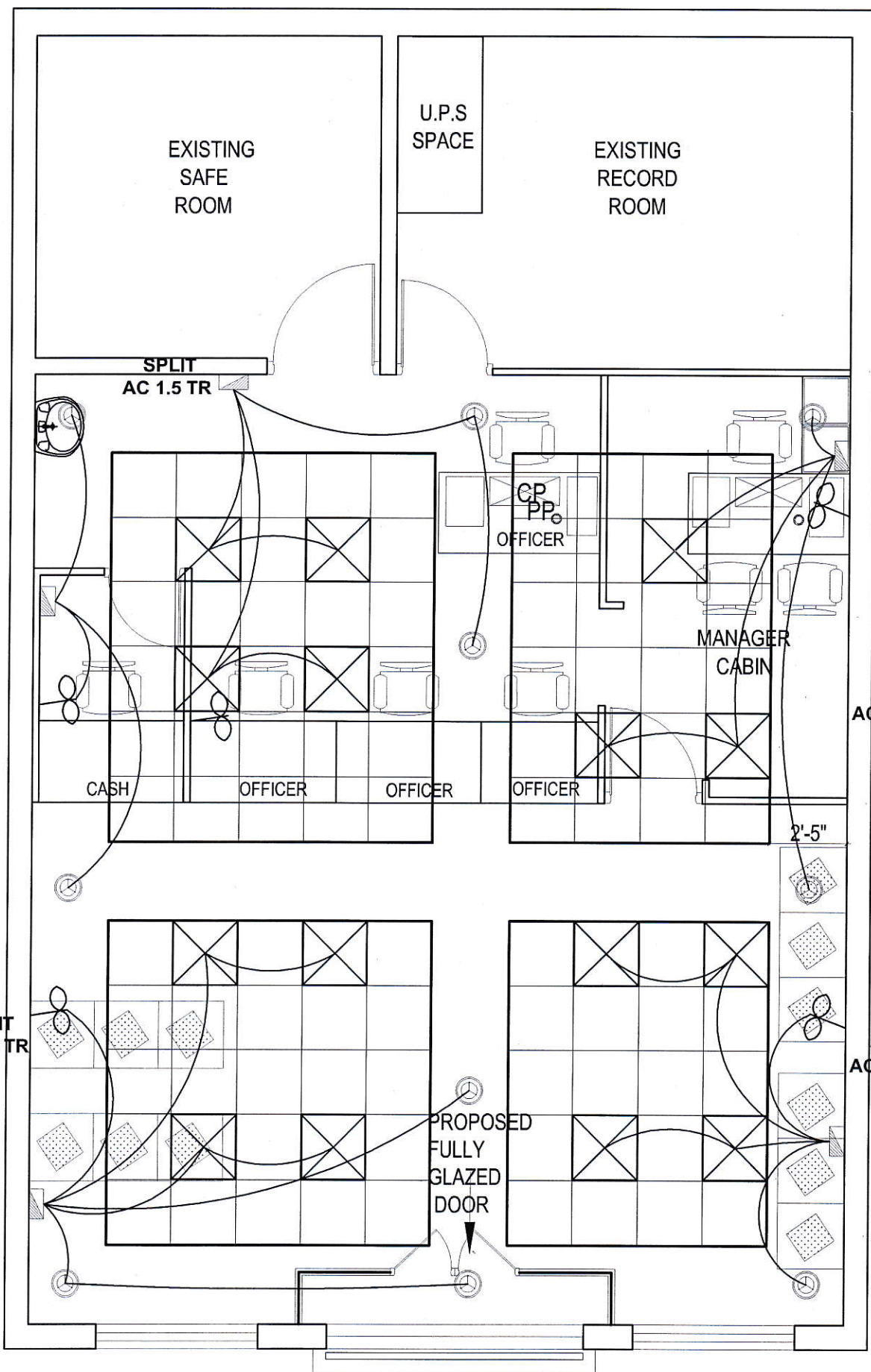
2	Incoming supply to UPS room: S/laying of 4 core 4sq.mm XLPE insulated armoured Copper conductor cable from main Panel to 4way TPN Db in the UPS room to be laid in medium duty 20mm PVC conduit/ pipe & run on surface or concealed in wall/ floor/ false ceiling including connections at both ends with lugs.	Mtr.	40		
	Cables Armoured/ Unarmoured - Finolex/ Polycab/ Havells/ RR Kabel/ KEI				
3	S/ F of 4way SPN Db metallic c/w 32A 4P MCB including all connections complete in all respects to the entire satisfaction of the Architect/ bank.	Each	1		
4	S/ F of 2way SPN Db metallic c/w 32A 2P MCB including all connections complete in all respects to the entire satisfaction of the Architect/ bank.	Each	2		
LOM	Distribution Boards Double door in steel sheet housing - ABB/ MDS/ Lexic/ Siemens/ HPL				
	MCB- 10kA "C" Characteristics L&T/ Siemens/ Schnider/ Legrand				
5	Supply & laying of incoming & outgoing wiring to & from UPS with 3*4 sq.mm FRLSH stranded Cu. Wires laid in 20/25 mm flexible PVC pipe medium duty to UPS incoming & from UPS outgoing.	m	10		
	PVC Insulated FRLSH Copper wire (ISI Marked)- Skyline/ Finolex/ Havells/ Polycab				
	PVC Conduit- CAP/ BEC/ Sieko/ AKG				
	UPS Output Distribution Board Branch				
7	Location on LHS wall near rear end - S/ F of 12way SPN Db c/w 32A 2P MCB and 7nos. 6A 1P (1 Loan, 3 cash + 1 officer beside cash cabin, 2 routers + 2*16A 1P MCB for 1 BM & 1 for 2 loan officers complete in all respect and as required & to the satisfaction of the bank.	Set	1		
	Distribution Boards Double door in steel sheet housing - ABB/ MDS/ Lexic/ Siemens/ HPL				
	MCB- 10kA "C" Characteristics L&T/ Siemens/ Schnider/ Legrand				
8	Supply & laying of incoming wiring from UPS Db in UPS room to UPS output Db near cash cabin with 3*4 sq.mm FRLSH stranded Cu. Wires laid in 20/25 mm flexible PVC pipe medium duty complete in all respects	m	35		
	PVC Insulated FRLSH Copper wire (ISI Marked)- Skyline/ Finolex/ Havells/ Polycab				
	PVC Conduit- CAP/ BEC/ Sieko/ AKG				
5	DISTRIBUTION MAINS				
1	S/F of 3 nos. 100Amp 415V Kit kats rewirable Porcelain fuse carrier & base c/w 4 hole heavy duty neutral terminal including making of connection from electronic meter c/w wooden board etc.	Set	1		
	SFU/ Fuses- HPL/ L&T/ Siemens/ GE Power/ Schnider (MG)				
2	Wall mounted VTPN Db				
	SITC of 4way Vertical TPN DB complete with 100Amp 25kA 4P MCCB as Incomer, 3nos. 63A TP MCB and 1no. 32A 1P MCB for glow sign board as out going complete in all respects as required to the entire satisfaction of the Bank/ Architect.	Each	1		
LOM	Distribution Boards Double door in steel sheet housing - ABB/ MDS/ Lexic/ Siemens/ HPL				
	MCCB- Legrand/ Schnider (MG)/ ABB/ Siemens/ L & T				
	MCB- 10kA "C" Characteristics L&T/ Siemens/ Schnider/ Legrand				
3	S/ laying of XLPE insulated armoured Aluminium Conductor cables including cost of lugs, cable glands etc. The cable should be laid on surface with proper clamps @750mm or laid & concealed in wall/ floor/ PVC Conduit/ false ceiling complete in all respect. The work also includes cutting chases for conduits in the wall/ floor (Without damaging the building) along with clamping the cable. All connection shall be done thru proper size of lugs				
	4c 25sq.mm for Pole & fuse Kit Kats	Metre	15		
	Cables Armoured/ Unarmoured - Finolex/ Polycab/ Havells/ RR Kabel/ KEI				
	Cable Lugs- Dowells				



4	S/ laying of XLPE insulated armoured Copper Conductor cables including cost of lugs, cable glands etc. The cable should be laid on surface with proper clamps @750mm or laid & concealed in wall/ floor/ PVC Conduit/ false ceiling complete in all respect. The work also includes cutting chases for conduits in the wall/ floor (Without damaging the building) along with clamping the cable. All connection shall be done thru proper size of lugs				
	4c x 10sq.mm for VTPN Db's	Metre	38		
LOM	Cables Armoured/ Unarmoured - Finolex/ Polycab/ Havells/ RR Kabel/ KEI				
	Cable Lugs- Dowells				
5	Rear + cash cabin Area Db - Supply, installtion, testing & commissioning of 6way HTPN Db single door complete in all respects for PP & LF as under- Location LHS wall near counters	Each	1		
	Incomer - 63A 4P MCB				
	1no. 32A 2P MCB for strong room supply				
	2no. 32A 1P MCB for AC - 1 AC cash cabin rear & 1 opposite Cash cabin				
	1no. 20A 1P MCB for twin PP - for pantry & D/w				
	5no. 16A 1P MCB - 2 router + 1 cash cabin				
	5 nos. 10A 1P MCB for L & F - (including 3 for cash Cabin)				
	3nos. 6A 1P MCB for L & F				
	Blanking Plates - 1nos.				
	All connection shall be done thru proper size of lugs				
LOM	Distribution Boards Single/ Double door in steel sheet housing - ABB/ Legrand/ Siemens/ HPL				
	MCB- 10kA "C" Characteristics L&T/ Siemens/ Schnider/ Legrand/ Havell				
5	F - FIXTURES & FITTINGS				
1	S/F of Energy efficient recessed mounted LED luminaire - Ultra slim 40w LED panel made from extruded Aluminium housing frame recessed type 2 x 2' Jaguar - Sauver LSVR 01S 040 XC - 220-240V 50Hz or equivalent Wipro/ Crompton Greaves or any other make approved by Bank/ architect (Including Extention of Existing Light point on verticle wall)	Each	10.00		
2	S/F of recessed LED downlighter - Recessed mounted 12w LED Green LED1 down lighter Philips DN193B LED12S-6500 PSU WH S1 complete in all respects or equivalent Wipro/ Crompton Greaves or any other make approved by Bank/ architect (Including Extention of Existing Light point on verticle wall)	Each	10.00		
2	S/F of Surface & wall mounted LED batten - Ultra-slim poly carbonate decorative LED batten with inbuilt heat sink, anti glare polycarbonate diffuser & energy efficient electronic driver 20W 1800 lumens - Make as approved by Bank/ architect	Each	10		
4a	S/F of Angle holder Anchor make c/w 8w LED bulb complete in all respects - Make as approved by Bank/ architect	Each	2		
	Light fittings - Philips/ Wipro/ Osram/ Havells/ Crompton Greaves				
3	S/F of energy svaing/ efficient ceiling fan 600mm sweep double ball bearing type - Havells ES -50 Premium 5 star/ Bajaj Maxima 4 blade c/w Electronic modular regulator or any make as approved by Bank/ architect	Each	2.00		
4	S/F of wall mounted fan - 80/100watt plastic body Fan - 450mm, 1300 to 1500RPM	Each	5.00		
C	TOTAL COST OF ELECTRICAL WORKS				
	GRAND TOTAL AMOUNT (A+B)				

Note: All rates are excluding G.S.T.





EXISTING
SAFE
ROOM

U.P.S
SPACE

EXISTING
RECORD
ROOM

SPLIT
AC 1.5 TR

CP
PP
OFFICER

MANAGER
CABIN

SPLIT
AC 1.5 TR

CASH

OFFICER

OFFICER

OFFICER

2'-5"

SPLIT
AC 1.5 TR

PROPOSED
FULLY
GLAZED
DOOR

SPLIT
AC 1.5 TR