



बड़ौदा यू.पी. बैंक
Baroda U.P. Bank

TENDER NOTICE

Baroda U.P Bank, Regional Office Jaunpur, intends to invite Tenders from furnishers/applicants for the **proposed Furnishing/ interior and electrical works of our Branch-Lohinda**, at Jaunpur as per enclosed offer Bid/BOQ proforma.

The completion period of work will be 21 days from the date of issue order .The work shall be executed under the supervision of our consulting Architect and as per specifications demonstrated in Offer Bid proforma/BOQ .

Offer Bid proforma/BOQ is attached with notice. Offer should be valid for a minimum period of 120 days from the last date of submission. No brokerage shall be paid. The sealed cover marked as Bid super scribing **"FURNISHING WORK BID FOR LOHINDA, BRANCH"** be put in one sealed envelope and other sealed cover marked as Bid super scribing **"ELECTRICAL WORK BID FOR LOHINDA, BRANCH"** be put in another one sealed envelope.

Both sealed envelope addressed and submitted to **The Regional Manager, Baroda U.P. Bank Regional Office-Jaunpur, Pawan Plaza Civil Line Jaunpur U.P-222002** within 21 days from the day of publication of this advertisement /on or before 10-08-2023 by 02.00 P.M.

Any decision taken by bank at any point of time in connection with this process shall be final and conclusive and no claim or dispute from any quarter in that regard shall be entertained.

Date-20-07-2023

Enclosed: Offer Bid Proforma/BOQ


Regional Head 

Bharat and Associates.
Architects, Engineers, Interiors &
Landscape Designers,
Shop no-1, First Floor, Jeevan Plaza
Viram Khand-5, Gomti Nagar, Lucknow-226010
E-Mail: bharatansassociatesiko@gmail.com

PROJECT - ESTIMATE FOR ELECTRICAL WORKS.

BANK - BARODA UP BANK

BRANCH - LOHINDA

S.NO.	PARTICULARS	Unit	Qty	Rate	Amount
	A-Electrical wiring (All switches to be Modular type - Anchor/ Havelis or equivalent approved by architect)				
	Light & Fan points				
1	Supply & Installation of concealed point wiring using 600v grade 3x1.5 Sq.mm copper conductor PVC insulated wires (with proper R.Y.B color code) pulled through heavy gauge 19mm PVC conduit pipe heavy duty concealed in wall/ floor/ panelling/ partitions or above false ceiling as per requirement including 2 Nos. 2.5 sqmm circuit wires from the relevant DB and also including 1.5 sqmm green color copper earth wire and switch plate, switches, etc. as approved by the Bank's Engineer/Architect. All switch & sockets shall be modular type complete with cover plate & GI/ MS box. The work shall also include for cutting chase for conduits and moulded boxes, if required, in the wall/ floor (Without damaging the building/wall) along with clamping the conduit at every 600mm interval & finally finishing the surface & matching the same with the existing surface. The rate should include the cost of all materials, labour, T&P, taxes & levies, scaffolding, shifting of furniture, carting away the debris and cleaning the floor etc. The job shall be complete & to the entire satisfaction of the Bank.	Point	45		
a	Light points + AFF points including the cost of 6A switch	Point	6		
b	Ceiling Fan Point including the cost of 6A Switch along with electronic regulator	Point	10		
c	Wall Fan Point along with 6A switch	Point	6		
d	6A switch & Socket on Sdb	Point	6		
2	RAW POWER POINT				
	Single Power Points - Supply & Installation of point wiring for Raw power plug points on workstations / table for computers using 2 X2.5 + 1x1.5 Sq.mm copper conductor PVC sheathed flexible wire pulled through heavy gauge 19mm PVC conduit pipe heavy duty concealed in wall/ floor/ panelling/ partitions or above false ceiling as per requirement. Each point consisting of 1 nos of 16A, 2/3/5 pin sockets & 1 No.16A Switch wired together forming one point. The earth wire of green color only. All switch & sockets shall be modular type complete with cover plate & GI/ MS box. The work shall also include for cutting chase for conduits and moulded boxes, if required, in the wall/ floor (Without damaging the building/wall) along with clamping the conduit at every 600mm interval & finally finishing the surface & matching the same with the existing surface. The rate should include the cost of all materials, labour, T&P, taxes & levies, scaffolding, shifting of furniture, carting away the debris and cleaning the floor etc. The job shall be complete & to the entire satisfaction of the Bank.	Point	6		
3	DISTRIBUTION				
A	SITC of 100A Kit kats fuse unit 3nos in wooden patra complete with 100Amp. Neutral link complete in all respect as required.	Set	1		
	1 no for Metre				
	1 no for Panel to Outer Side Of Wall (For Generator Connection)				
4	Supply Installation testing & commissioning of XLPE Insulated Armoured Al conductor cable between main panel & DB's & generator if required thickness of approved make Skytone/ Havelis based on the load assessment & confirmation of the same with architect. This rates include cost of lugs at both the ends				
	4c x 20 sq.mm cable from Main Panel TO LHS DB (Approx - 20 mtr)	JOB	1		
	4c x 20 sq.mm cable from Main Panel to RHS DB (Approx - 20 mtr)	JOB	1		
	4c x 20 sq.mm cable from Main Panel to Kikat (Generator) (Approx - 40 mtr)	JOB	1		
5	Supply, installation, testing & commissioning of VTPN Db double door with MCB as incomer IP 42 complete in all respects for AC, PP and L & P as under - Siemens/ Hager/ Lagrand/ ABB				
A	RHS 6way VTPN db - Location RHS wall opposite Cash cabins (From entrance to Rear record room & Toilet area) - Siemens 8GB0406VRC or equivalent				
	Incomer - 63A 3P MCB 10KA adjustable neutral to be directly connected to neutral bus	Each	1		
	3no. 32A 1P-MCBs 10 KA - AC's - 2nos. RHS & 1rear				
	3no. 16A 1P-MCBs 10 KA - for single power points - 2 cash & 1 May I help You & 2nos. D/W				
	4nos. 10A 1P-MCBs 10 KA for L&F				
	4os. 6A 1P-MCBs 10 KA for L&F				
	Blanking Plates - 2no.				
	All connections to be terminated thru lugs				
B	LHS 6way VTPN db - Location LHS wall behind advance (From LHS LV Cash to Mgr Rm)- Siemens 8GB0406VRC or equivalent				
	Incomer - 63A 3P MCB 10KA adjustable neutral to be directly connected to neutral bus	Each	1		
	4c. 32A 1P-MCBs 10 KA - AC's - 3nos. LHS & 1 Mgr Rm				
	4no. 16A 1P-MCBs 10 KA - for single power points - (LV cash, 2 CRE, 1Advance, 2 MR & 2 Router)				
	2nos. 10A 1P-MCBs 10 KA for L&F				
	2os. 6A 1P-MCBs 10 KA for L&F				
	Blanking Plates - 2no.				
	All connections to be terminated thru lugs				
6	UPS				
A	Sub Main Wiring/ Cabling - SITC of sub main wiring 4nos. 10 sq.mm Stranded copper wires for UPS Input from main incoming panel to incoming Db of UPS power input system etc. in 25mm dia PVC heavy duty conduit complete to the satisfaction of the bank.	JOB	1		
B	UPS Power Input System: SITC of 4way TPN Double door Db IP 42 horizontal Complete with 1no. incoming 32A. TP MCB and 3 x 32A 2P MCB's to regulate supply for UPS complete in all respect as required and to the satisfaction of the bank	Set	1		
C	Wiring for UPS Input & UPS Output (For both Critical 2Kva & Non-Critical 3Kva UPS) with: 2x4 0sq.mm + 1x 1.5sq.mm stranded Cu. conductor (Finolex / Anchor / Skytone) to be laid in 19mm PVC pipe heavy duty/ Flexible pipe laid & concealed in wall/ floor/ panelling/ partitions or above false ceiling as per requirement. The rate should include the cost of all materials, labour, T&P, taxes & levies, scaffolding, shifting of furniture, carting away the debris and cleaning the floor etc. The job shall be complete & to the entire satisfaction of the Bank.	JOB	1		
D	S/P of 32A 2P MCB in 2way metallic box including proper connections thru lugs. Both the Db's shall be inter looped- Qty included in item 3. (2nos. For ATM and 2nos. For Branch)	Each	1		
E	UPS Output Power Distribution System: SITC of 12 way SPN Db Double door IP-43 Siemens make with 32A DP 10KA MCB and 09 nos. SP 10KA MCB complete in all respect and as required & to the satisfaction of the bank. Siemens/ L&T/ MDS/ Schneider	Set	1		



	Wiring for UPS Db's with 2x4.0sq.mm + 1x 1.5sq.mm stranded Cu. conductor (Finolex /Anchor /Skystone) to be laid in 19mm PVC pipe heavy duty/ flexible pipe laid & concealed in wall/ floor/ panelling/ partitions or above false ceiling as per requirement. The rate should include the cost of all materials, labour, T&E, taxes & levies, scaffolding, shifting of furniture, carting away the debris and cleaning the floor etc. The job shall be complete & to the entire satisfaction of the Bank.	JOB	1			
G	Supply & fixing of 4nos. 6A switches & sockets (Modular type) of MS/GI box & cover plate) complete with computer point circuit wiring with 2x2.5sq.mm + 1x 1sq.mm stranded Cu. Single-core Copper conductor (Finolex/Anchor/RPG) to be laid in PVC conduit 1" dia/ vertical drops heavy duty laid & concealed in wall/ floor/ panelling/ partitions or above false ceiling as per requirement.	Per Node	8			
E- EARTHING						
7	For Main Panel - S/burying of Dual pipe technology (Pipe in Pipe) earthing electrode having GI 80mm O/D pipe with 25 micron coating, 3metres long. The space between two pipes to be filled with Highly conductive & Non corrosive chemical compound. The installation shall be thru earth auger. The vacant space between pipe & hole shall also be filled with compound all around. The job also includes S/F of GI strip clamp with two holes [with SS/GI bolts & nuts] on the electrode & taking two earthing leads of 25 x 5 mm GI strip (Assumed length of 10m - beyond 10m to be paid extra) upto Main panel complete in all respects with guaranteed E/N voltage of less than 3 volts and resistance less than 1 ohms. The distance between two earthing pits to be 10ft or more INCLUDING Earth wire 4 sq mm copper wire . Approx -80 mtr (2 FOR BRANCH & 1 ATM)	Per lcn.	2			
F- FIXTURES & FITTINGS						
A	a) Supplying and fixing Philips make 36W LED FLAT PANEL 600x600 suitable for recess mounting CRCA sheet, asthetic looking, or eqv Philips/havells	Each	8			
B	Supply installation testing and commissioning of 1*20watt Batten type tubular LED light fitting with LEDs, driver, diffuser, and housing complete in all respects in UPS room and record room/bath room /suitable place with complete in all respect with required color on need basis.	Each	15			
C	b) Supplying and fixing Philips make or eqv 10 W LED round type downlighter (Philips/ wipro /Jaguar)	Each	0			
E	l) Supply & installation of wall bracket fan 450 MM (Heavy duty/ high speed) Make Bajaj/crompton greaves/havells/Orient (to be supplied after consultation with architect/Electrical Engineer as per approved drawing)	Each	10			
F	g) Supply & fixing of the 1200 mm 48" Sweep Ceiling fan (Orient PSPO/crompton greaves/havells) with downward rod(below false ceiling), canopy etc. including of PVC flexible copper wire.(white colour)(High speed)(Warranty Certificate is necessary)with downward rod, circular boxes, ball sockets, ceiling plates,suitable arm bracket etc. including connection with wire)White colour (WITH REGULATOR)	Each	6			
G	Supply and fixing LED Bulb 9 watt	Each	4.00		0.00	
9 I - DATA CABLING						
A	Supply & Fixing of XL RJ 45 toolless information outlet with Duplex face plate with dual connectors Grey colour cat 6e including cost of supplying & laying CAT 6e (as directed by Architect from Server to Switch. Switch to computer I/O data socket as required complete in all respects) in 25mm dia rigid PVC conduit (including laying of GI draw wire complete with junction box, circular box, elbows, bends & other accessories as required) by chase cutting on floor, wall, through partition or over false ceiling. The data cabling pipe should be laid at a minimum distance of 3ft from pipes laid down for power distribution) including interconnection with connectors as required complete in all respects.	Each	8			
B	Supply & fixing of 7ft Grey colour Patch chord Giga speed Systimax/ D link make	Each	8			
C	Supply & fixing of 3ft Grey colour Patch chord Giga speed Systimax/ D link make	Each	8			
D	S/F of 24Port Jack Panel fully loaded systimax make	Each	1			
F	S/F of Cable Manager as required	Each	1			
GRAND TOTAL AMOUNT						



Bharat and Associates.
Architects, Engineers, Interiors &
Landscape Designers,
 Shop no-1, First Floor, Jeevan Plaza
 Viram Khand-5, Gomti Nagar, Lucknow-226010
 E-Mail: bharatandassociatesiko@gmail.com

Ref No.: BA/01/5008/2023

Dated 20-07-2023

**DETAILED ESTIMATE / SPECIFICATION FOR BILL OF QUANTITIES
 OF FURNISHING WORK FOR BARODA UP BANK BRANCH AT LOHINDA**

Sl.no	Description of items	Unit	Qty.	Rate	Amount
1	PAINTING WORK with Two Coat POP Base (Only Hall Area) Painting on undecorated / decorated wall and ceiling surfaces with two or more coats of acrylic emulsion (Asian/Berger make) (as / shade approved by the Architect) of approved brand. It shall include for preparing the surfaces clean, even and smooth with thoroughly brushing with broom, scratching with patti and sand papering respectively, so that the surfaces are free from oil, grease, dirt, mortar droppings & other foreign and loose matter. It shall also include for preparing the surface and filling of holes with plaster of paris before priming coat of whitening / approved primer. The rate shall include cost of all materials such as plaster of paris, whitening / primer, glue (Fevicol), indigo / stainer, brushes, sand paper, patti, dhoti, broom stick, clean water with storage and other containers, labour, scaffolding / ladder charges, cleaning of floors and other sundries etc., all complete to the satisfaction of the Architect.	Sft	1570		
2	Entrance Door Branch Providing fabricating & fixing in position twin -style door at Main Entrance made of anodized/powder coated Aluminum sections of size 100mm height x 50mm thick aluminum bottom rail, 100mm x 50mm thick vertical and top rail 100mm x 50mm thick lock rail floor spring of ISI make, clip sections and 12mm thick glass(Modi/ Saint Gobain make) including fixing the frame to brick wall/RCC/wooden surfaces with necessary fasteners to have proper fixity including all incidentals etc complete. Glass to be fixed in the grooves of the aluminum sections with necessary materials/beading etc. The job also includes cost of providing & fixing heavy duty double action hydraulic floor spring (ISI mark) in the floor, fixing the door on it, including necessary fixing materials on the lintel/bottom, bolts, locks & satin finish stainless steel decorative tubular handles(approx.300mm long) on both faces complete as per drawing and instructions. All members to be 16 gauge. The vertical shutter rail to house wool packing to act as a sealant for a gap between shutter and frame fixed glazing. The rate should also include cost for decorative etching on the glass.	Sft	95		
3	Computerised Ledger & Cash Counter				



	Description of items	Unit	Qty.	Rate	Amount
	Providing and placing in position ledger counter with top, vertical sides/dividers, skirting and fascia made out of 19mm thick water proof board with 1mm thick laminate (as/shade approved by the Architect) on all exposed surfaces. It shall also have 75mm x 40mm teak wood runners below the top and for footrest below. Every unit shall be provided with a side unit (size - W-500mm, H-750mm, D-500mm approx.), consisting of 150 mm deep drawer at top and a cabinet with open able/hinged shutter below.				
	The fascia of drawer and shutter of cabinet below shall be made out 19mm thick water proof board with 1mm thick laminate (as/shade approved by the Architect) and sides and bottom of drawer shall be made out of 12mm thick water proof ply. The side unit shall have CAM locks, handles, guides, sliding units, hinges, magnetic catcher's etc. of approved make. Every unit shall be provided with a keyboard drawer unit (size - W-550mm, H-100mm, D-300mm approx.) below. The counter shall have 100mm deep fascia, below the top, in which keyboard drawer unit shall be adjusted.				
	It shall be made out 19mm thick water proof board with 1mm thick laminate (as/shade approved by the Architect) and sides and bottom of drawer shall be made out of 12mm thick water proof ply. The unit shall have CAM locks, handles, guides, sliding units etc. of approved make. The job shall include for 6mm x 6mm grooves in between sides and open able drawers and hinged shutters. All the exposed edges of water proof board and ply shall be provided with 6mm thick teak wood/hard wood lipping. All teak wood surfaces shall be melamine polished and other internal surfaces shall be painted with two coats of synthetic enamel over one coat of primer, all complete to the satisfaction of the Architect.				
a	High Level	Rft	5		
	High level (two levels) Computerised cash counter.				
	Lower level top shall be 900mm wide and at 750mm level from floor & upper level top shall be 250mm wide (and at 1150 mm level from				
b	Low Level	Rft	15		
	Low level (two levels) Computerised ledger counter including 1.5 ft High 12 m.m. glass in front of counter with brass clamps The edges of the glass to be machine polished.				
	Lower level top shall be 900mm wide and at 750mm level from floor & upper level top shall be 150mm wide and at 900mm level from floor				
4	Solid full height partition both side Laminated	Sft	0		
	For unglazed partitions, no glazing to be given in partition/doors & other specifications as below 9.				
	(note : in case of false ceiling , the vertical TW members to be fixed with pucca ceiling but the area of partition payable will be below the false ceiling only.)				
5	Partly glazed partition for cash cabins (Wall side partition not to be done)	Sft	90		
	Decorative Grill (12mm thk)-hexagonal opening as per instruction of Bank's Engineer/Architect.) All exposed edges of Plywood shall be fixed with 1/8" C.P.Teak Lipping.				



o	Description of items	Unit	Qty.	Rate	Amount
	<p>Providing and fixing of Cash Enclosures at height of 7'-4" with Anodized aluminium frame work, heavy sections (2mm thickness) of 2"x1.5", spacing of 2'0"x2'0" on bothsides and covered 6mm thick BWR plywood finished with 1mm thick laminate of blue, red colours for skirting & borders.Partition shall have provision for opening and 19mm BWR plywood tray for challan receiving purpose. Cost include aluminium grill and fixed with teak wood beading and duco paint. Cost also include 3 Nos of Solid core flush Doors with sizes of 2'6"x7'0", fixed in the partition. Door shall have teak wood beading and lipping with duco paint. Door finished with 1mm thick laminate of white colour for base and red & blue for skirting of approved pattern. Door shall have 8mm glass fixed with teak wood beading and duco paint. Rate to include hardware's like brass hinges, godrej three nos of night latch, door closure, door stopper and handles. Cost also include cash transaction opening shall be provided with door arrangements made with BWR plywood frame work finished by laminate, duco paint and locking system. Cost include wastages, transports, loading, unloading charges, labours, materials, tools, lead, lift and etc.Complete as per drawings and instructions of the Architect.</p>				
	<p>Solid till 4'-0" then Aluminium Decorative Grill height till 7'-0"then again solid</p>				
6	<p>Partly glazed low height partition</p>	*Sft	145		
	<p>Same specification as in 1 but P/F half height partition of height 4'-6" with wooden laminate till 3'-0" and 1'-6" height 12 mm thick glass secured with D brackets including all hardware necessary with the same specs.as above.</p>				
7	<p>Providing and fixing Column Panelling consisting of 2" x1 " 18 gauge section placed at 2'0x2'-0" horizontally and vertically with Unannodised Allumnium size 1.5mm thick of JINDAL/ INDAL confirming to ISI 303 standard as internal frame structure (as per site requirement) framework. The framing shall be fixed with with 8mm thick MR grade ply + 6 mm MDF of approved make firmly screwd to the aluminium frame on either side finished with 1mm th (high glossor texture) laminate as per approved sample. Item includes providing and fixing 12x12mm steem beech wood beading</p>	Sft	365		
	<p>making 6 mm grooves complete with polish & melamine spray finish on wood surface/grooves as per architectural drawings finished with 1mm thick laminate. Item includes providing and fixing 100mm wide skirting of 1mm thick mettalic laminate as per approved sample. Note: Surface measurement for one face & visible areas below false ceiling will be made for payment.</p>				
8	<p>Manager's table + Side Table with 12mm thk glass top</p>	Each	1		
	<p>Providing and fixing in position manager's table of size 6'-0"x2'6" as per drawing no. including side storage (credenza)by using 25 mm thick plywood for top and 18 mm thick plywood for all other horizontal and vertical members. Telescopic CPU stand/ready made keyboard tray shall be provided of approved model and make. Footrest made with TW member of size 4"x1 ½ " finished with french polish.as per.</p>				



No	Description of items	Unit	Qty.	Rate	Amount
	drawing shall be provided. Facia of side storage(credenza) shall be finished with 1 mm thick laminates as shown in the drawing and all other sides shall be finished with white enamel paint. The side storage (credenza) shall be provided with handles (stainless steel finish) and channels as per approval of the project consultant/bank . all exposed plywood surfaces to be finished with 1 mm thick . laminates of approved make and shade and all exposed edges of table top and ply verticals to have 1" x ¼" TW lipping , all exposed TW section to be melaminated and internal surfaces to have white enamel paint as directed. Item ti include plywood boxing , all necessary hardware and fittings in stainless steel finish , lipping to all eds etc. complete in all respect.				
9	Officer table + Side Table with 12mm thk glass top 5'-0"x2'-6")+Side table	Each	1		
	Same specification as above				
10	Full height storage / low height storage/ back storage (credenza)	Sft	95		
	Providing and fixing in position full height storage / low height storage / back storage (credenza) as shown in drawing no. (8) (9) and (10) respectively using plywood of required thickness finished with 1 mm thick laminates as shown in the drawing and all other sides shall be finished with white enamel paint as detailed therein.				
	The storage units shall be provided with handles (stainless steel finish) as per approval of the project consultant/bank.				
	All exposed plywood surfaces to be finished with 1 mm thick. Laminate of approved make and shade and all exposed edges of plywood to have 1"x1/4" TW lipping . all exposed TW section to be melaminated in matching colour laminate and internal surfaces to have white enamel paint as directed . item to include all necessary hardware an fittings in stainless steel finish ., Godrej multi purpose locks including magnetic ball catcher etc. complete in all respect.				
11	12 MM THICK GLASS FOR CASH CABIN				
	Providing & fixing 12 m.m. glass in front of cash cabin with brass clamps including cut out for passing currency as/details.The edges of the glass to be machine polished.	Sq. ft.	13		
12	Suggestion box	No	1		
13	Public writing wall stand (including cost of fitting) 36"x16"x9" 19mm Board, 1.00 mm thick mica, teak wood beeding, Polish/Paint with fitting.	No	1		
14	Check drop box	No.	1		
				Total Rs.	

Not: GST Will be charged Extra

For - Bharat & Associates

Approved manufacturers / suppliers

Sl. No.	Materials	Approved manufacturers / suppliers
1	Paint	I.C.I. (Dulex - Duco) / Asian paints / Goodlac Nerolac



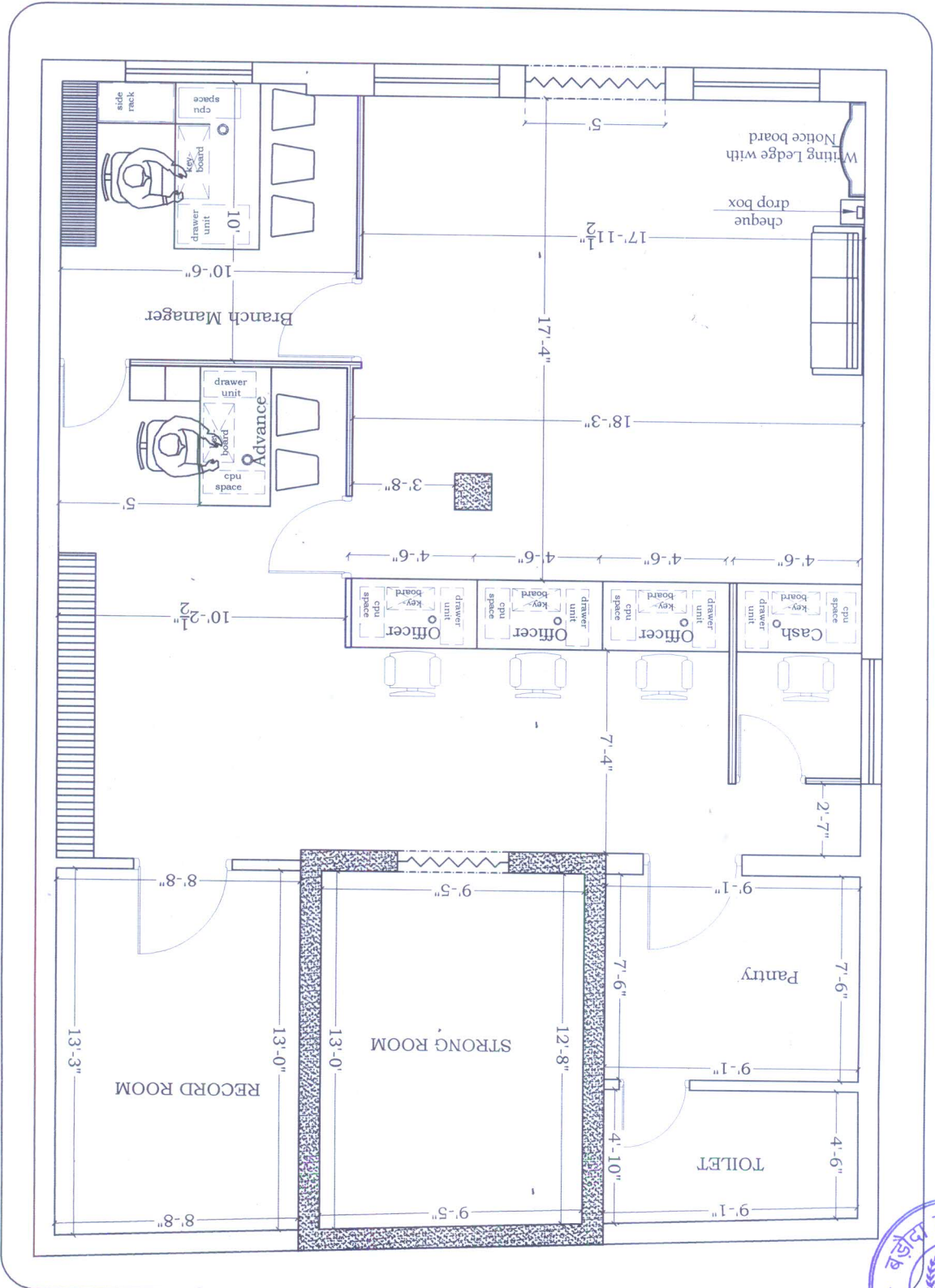
No	Description of items	Unit	Qty.	Rate	Amount
2	Plywood	BWR- Century/Green/Archid only Premium quality			
3	Wood preservative	BWR- Century/Green /Archid only Premium quality			
4	False ceiling	Armstrong , Indian gypsum board			
5	Laminates	Sunmica/ Archid/Century/Green 1mm thick as per bank approved color			
6	Screws	G.K.W./Nettle fold			
7	Adhesive	Fevicol SH			
8	Night latch	Godrej			
9	Locks	Godrej			
10	Aluminium door frame	Jindal			
11	Glass	Modi/Asahi/Saint Gobain			
12	Aluminium cladding	Eurobond/Altobond/Alukbond			
13	Key board drawer	EBCO			
14	Telescopic CPU stand	EBCO			
15	Cable organiser (wire manager)	EBCO			
16	Vitrified tiles	Jhonsions Perlto			
17	Venetion blind	Vista, Luxaflex			

Note : Plywood mentioned in the drawings as well as in bill of quantities should be IS: 710 BWR- Century/Green only Premium quality.



PRODUCED BY AN AUTODESK EDUCATIONAL PRODUCT

Project	Proposed Layout Plane of Indian Bank Lohinda Branch Opp. 1	Purpose	North
	Layout Plane		Architect
Date	24/6/2023	Drawn By	Aamir Husain
	Shop No.- 1, First Floor, Jeevan plaza, Husariya Crossing, Vram Khand-5, Gomti Nagar, Lucknow.		7572003110, 7572003101
BHARAT & ASSOCIATES			



5/2/23

PRODUCED BY AN AUTODESK EDUCATIONAL PRODUCT

PRODUCED BY AN AUTODESK EDUCATIONAL PRODUCT

PRODUCED BY AN AUTODESK EDUCATIONAL PRODUCT

