



**बड़ौदा यू.पी. बैंक**  
**Baroda U.P. Bank**

RO/KAND/04/P&E /2023-24/55

Date 26-07-2023

**SHORT TERM TENDER NOTICE**  
(For Empanelled Furnishers & Interior Decorators only)

**INTERIOR DECORATION WORK IN RASOOLPUR GOGUMAU**  
**BRANCH OF BARODA U.P. BANK**

**IMPORTANT DATES**

DATE OF ISSUE OF TENDER NOTICE	26.07.2023
LAST DATE AND TIME OF SUBMISSION OF TENDER	19.08.2023 up to 05:00 P.M.
DATE OF OPENING OF TENDER (FINANCIAL BID)	21.08.2023 at 03:00 P.M.

**Baroda U.P. Bank**  
Regional office Kanpur Dehat  
Nabipur, Jainpur Kanpur Dehat  
209311(U.P.)

  
**Chief Manager**

**Date: 26.07.2023**

## **NOTICE INVITING TENDER**

Sealed item rate short term tenders are invited on behalf of the Regional Manager, Baroda U.P. Bank, from the Furnishers & Interior Decorators having valid Empanelment with the Baroda U.P. Bank for the work of INTERIOR DECORATION WORK IN RASOOLPUR GOGUMAU BRANCH OF BARODA U.P. BANK, Regional Office Kanpur Dehat.

1. Issue of tender documents : 26/07/2023 to 19/08/2023
2. Last date of receipt of tender documents : 19/08/2023 up to 5.00 PM
3. Date of opening of tender documents : 21/08/2023 at 03.00 PM
4. Place of submission & opening of tender : Baroda U.P. Bank, REGIONAL OFFICE, KANPUR DEHAT
5. Period for completion of work from order date : Maximum 30 days
6. Retention percentage : 10% (Ten percent) from final bill
7. Defect liability period : 12 months from the date of completion certificate issued by the Bank Architect.
8. Release of retention money : After 14 days from defect liability period.

19/8/23 ✓



## SUBMISSION OF TENDER

The tenders are to be submitted in a sealed envelope and clearly superscribed as "Tender for FURNISHING & INTERIOR DECORATION WORK IN RASOOLPUR GOGUMAU BRANCH OF BARODA U.P. BANK, REGIONAL OFFICE, KANPUR DEHAT.

- Bids must be submitted through hand to hand or through registered Post.
- The bid must contain two Envelopes as per procedure given below

### FIRST ENVELOPE MUST CONTAIN ALL THE DOCUMENTS GIVEN BELOW:

1. Photo copy of PAN Number duly attested.
  2. Photo copy of GST Number duly attested.
  3. Registration certificate of both work i.e 'furniture & fixture work' and 'Electric & data cabling work
  4. All the documents should be self attested along with stamp of the Firm.
- IT MUST BE MENTIONED ON ENVELOPE "DOCUMENT SUBMITTED FOR BID OF FURNISHING & INTERIOR DECORATION WORK IN RASOOLPUR GOGUMAU BRANCH".

### SECOND ENVELOPE MUST CONTAIN ALL THE DOCUMENTS GIVEN BELOW:

SECOND ENVELOPE MUST CONTAIN only price bid and nothing else.

- The price must be submitted on the prescribed format
- Price bid will not be accepted on any other format or document.
- It must be clearly mentioned "PRICE BID OF FURNISHING & INTERIOR DECORATION WORK IN RASOOLPUR GOGUMAU BRANCH".

**BOTH TWO ENVELOPES MUST BE KEPT IN THIRD SEALED ENVELOPE AND SUPERSCRIBED "BID FURNISHING & INTERIOR DECORATION WORK IN RASOOLPUR GOGUMAU BRANCH".**

### GENERAL INSTRUCTIONS TO TENDERERS

#### Time of Work Completion- One Month (From the date of work order)

1. The work as detailed in this tender shall be executed and completed in all respects within one month in accordance with the Tender Document, Bill of Quantities, Drawings and Instructions, to the satisfaction of the Architects and the Bank. A penalty of 1% per day of total work awarded will be imposed for delay in work completion.
2. The term "Contractor" shall mean the successful tenderer to whom the Contract shall be awarded.
3. The Contractor should quote the rates in figures and words. Any corrections or Over-writing should be initialed by the Contractor.
4. The Contractor should submit the tenders with seal, signature and date on each Page.
5. The Contractors should submit the cost of the main items as per tender specifications. Further modification after awarding of the contract shall be not allowed unless there is specific instruction

*(Handwritten signatures and initials)*



- by the Bank/Architect to change specifications.
6. The contract is time-bound and the works are to be completed within the time limit specified in the notice inviting tenders. This is a working office and the contractor has to work with no or minimum obstruction to its regular services.
  7. The decision of Employer and the Architect is final and binding.
  8. The contractor must submit registration certificate of both work i.e 'furniture & fixture work' and 'Electric & data cabling work' in separates envelope must be mention "Technical Bid for furnishing & electrical work".
  9. The contractor must submit the tender for both work i.e 'furniture & fixture work' and 'Electric & data cabling work', Partially filled tender will be rejected.
  10. **For Electrical fixtures and light points required as per drawings the contractor has to draw the wires from the existing positions of light points, power points wherever and if applicable. The contractor shall submit the certificate from electrical contractor holding required license/certification from directorate of electrical safety (U.P.)/competent authority of any other State.**

### **TERMS & CONDITIONS**

1. Unless otherwise mentioned, all works are with no allowance for Lapse waste. Unless otherwise described or measured separately, price for all the items shall include all necessary straight & curved edges.
2. Any damage to the work before the site is handed over, is to be replaced or made good at the expense of the contractor to the entire satisfaction of the Architect/Bank.
3. Income Tax, Other Tax as applicable shall be deducted at source as per the Income Tax Act / Rules.
4. The quantities indicated are subject to change. The payment of the bill shall be made as per the actual measurement as certified by the architect but not exceeding the total value quoted in the tender form.
5. The Architect or any officer of the Employers will be free to inspect the work at the site during the period of execution. Any suggestion of change or modification to improve the quality of work will be carried out subject to prior approval of the competent authority of the employers and that of the Architect.
6. Incase of failure to take up the work even after accepting the work order, or leaving the work incomplete, or for defective work not rectified, or violation of the terms and conditions, the contractor will be de-panelled/blacklisted.
7. For any item of work not covered or any unforeseen items of work, payment will be made according to the rates approved for similar nature of work, the costing done by the Architect, as per current PWD schedule of rates, or as per analysis of material cost, labour rate and profit to the Contractor at 10%. The Contractor must obtain prior approval in writing before undertaking such additional works.





8. The tenderers shall sign each & every page of the tender documents including the drawings attached here to.
9. The amount is to be quoted in figures as well as in words. In case the rates quoted in words and in figures are in variance, the amount written in words shall be taken as final.
10. The Contractor shall make their own arrangement at their own cost for storing materials, plants, tools etc. The employers will not be liable for security of the Contractor's materials.
11. No tools or plants will be issued by the bank.
12. The Employer / Architect reserves the right to accept or reject any tender without assigning any reason whatsoever and the said decision shall be final and binding upon the tenderer.
13. In case of breach of contract by the Contractor for slow progress of works or any other claim of damage, the Employer or the Architect may have the power to rescind the contract without furnishing further reasons thereof.
14. The Architect shall have the power to ask the contractor to furnish the sample/ color / test certificate from any Govt. /Authorized agent for any materials used/ to be used in the Works, the expenditure of which is to be borne by the Contractor.
15. The Employer shall be not be liable for any damages or compensation payable as a consequence of any accident or injury to any workman or other persons in the employment of the Contractor or any sub-contractor.
16. On completion of the Works, all rubbish, debris, materials, tools, Laborers, etc. to be removed by the contractor from the site and the contractor will hand over the site clean & clear & in usable condition within 3 days of completion of the works. Failing this, the employer may
17. Dispose the materials at the cost of the contractor.
18. In case of any dispute, the matter will be referred to the Regional Manager, Baroda U.P. Bank, Regional Office Kanpur Dehat (UP).
19. Final Payment after completion of Project will be done with the certificate of Architect with deduction of retention money by the Bank.
20. The rates quoted in the tender shall exclude GST but include all excise tax, No escalation of rates will be allowed under any circumstances.

Handwritten signatures in blue ink.

\*\*\*\*\*



**Abstract of Cost for Baroda U.P. Bank**

**Branch at Rasoolpur Gogumau, Region Kanpur Dehat**

S.No.	DESCRIPTION	AMOUNT (Rs.)
1	FURNISHING WORKS	
2	AIR- CONDITIONING PIPING WORKS	
3	ELECTRICAL AND DATA CABLING WORKS	
	<b>TOTAL (Rs.)</b>	

**Note: All rates are excluding G.S.T.**



**Estimate for Furnishing, Air Conditioning Piping and Electrical works for Baroda U.P. Bank  
Branch at Rasoolpur Gogumau, Regional Office Kanpur Dehat.**

- 1.No offsite prefabrication shall be allowed in any case. All fabrication shall be done at the site after getting the materials
- 2.No payment shall be made for any in completed or unsatisfactory work
- 3.The Contractor should strictly follow the Booklet requirements of the Bank including the detailed drawings in the booklet. Any discrepancy between the booklet and the Specifications below
- 4.List of material to be strictly as per the booklet.
- 5.Cable Managers to be provided in the tables and Counters wherever required.
- 6.All underframe should be properly treated with antitermite and waterproofing material
- 7.All Locks in the drawers and doorsetc. should be of Godrej
- 8.All keyboard Trays and Drawers to be on Channel Sliding Mechanism.
- 9.Etching to be provide as per Banks Design and Specification.

S.No.	Item	Units	Qty.	Rate	Amount
1	<b>P1- (Full height glazed/Unglazed partition All partitions to have etching as per the design of the Architect.</b>	Sq.Ft.	234.00		
	Glazed Partition(upto false ceiling height only considered and above necessary ceiling supports to be provided) with Anodized Aluminium frame work, heavy sections (2mm thickness) of 2"x1.5" section, spacing of 2'0"x2'0" on bothsides and covered with <b>9mm thick BWP plywood</b> finished with 1mm thick laminate of banks colours for skirting & borders on both sides and approved colour laminate for base colour on both sides. Above 1'0"/2'6"/3'0" height partition, <b>fixed with 8 mm bevelled glass with sticker works door</b> and teak wood beading with melamine polish. Clear glass shall be finished with frosted film sticking over the glass of approved pattern and design. Rate to include providing cutouts and provisions to run electrical conduits, switches, etc.Cost include wastages, transports, loading, unloading charges, labours, materials, tools, lead, lift and etc.Complete as per drawings and instructions of the Architect.				
	The job shall also include for provision of laying conduits, switch boxes etc.The erection of partition shall include for expansion bolts cleats, clamps bolts, nuts, screws, rivets and other accessories, all complete up to the satisfaction of the Architect.				
	The partition and doors shall have hinges floor springs/sliding arrangement/ hydraulic door closer, mortise locks with handle set (Godrej,Dorma make all), etc.The rate shall include cost of all materials, labour, T&P, wastages, etc. required for proper completion of work, all complete to the satisfaction of the Architect.				
	Full height Solid partition (height 10'-6"or ceiling height) with Anodized Aluminium frame work, heavy sections (2mm thickness) of 2"x1.5" sections, spacing of 2'0"x2'0" on bothsides and covered <b>with 9mm thick BWP plywood</b> finished with 1mm thick laminate of approved colour for skirting & borders and laminates for base on both sides with all necessary fixing accessories, arrangements and etc.Partition shall have necessary opening of approved size as per standards for fixing machine's and additional frame to be fixed for strengthening the partition. Rate to include providing cutouts and provisions to run electrical conduits, switches, etc.Cost include wastages, transports, loading, unloading charges, labours, materials, tools, lead, lift and etc.Complete as per drawings and instructions of the Architect.				
	Supplying and Erecting Saint Gobain Gyproc Gypboard false ceiling at different heights with saint gobain framework of G.I.Section (of medium thickness) of spacing 4'0"x2'0" above with 12.5 mm gypboard shall be fixed with all necessary fixing accessories, arrangements and etc. Rate shall include cut-outs for lights, ac and etc. The ceiling shall be putty finished and sanded to form clean and homogeneous surface. Cost include hidden lighting arrangements and etc. Rate to include painting two coats of acrylic emulsion of approved colour after necessary preparation, one coat of primer, full putty and tc. Cost include all necessary hardwares like nails, screws, wastages, transports, loading, unloading charges, labours, lead, lift, materials, tools and etc. Complete as per drawings and instructions of the Architect.				



2	<b>Main Door with Fixed Aluminium Glazing Powder coated of Bank colour coding.</b>	Sq.Ft.	90.00		
	Door Size-4'-0" X 7'-0"				
	Frame- 6"X2" Aluminium powder coated frame (18 gauge) (All four sides) with approved colour Bank's Engineer/Architect				
	Glass 5.0/ 6.0mm thick Plane glass with mat film as approved by architect/bank engineer)				
	Floor Spring-Heavy Duty appropriate size (Hyper/Everite make)				
	Handle-'D' Type stainless steel finish both sides with push/pull indication)				
3	<b>False Ceiling (Armstrong)</b>	Sqft	336.00		
	False ceiling - 2 Grid false ceiling- Providing and fixing Saint gobain tile Grid ceiling of (GYPROC SAINT-GOBAIN Mineral fiber ceilings of 'CELOTEX PIN' board with "Narrow Reveal edge Corner bevel" 14mm grid (Bolt Slot) section) and (ARMSTRONG "CLASSIC LITE RH99" tile with "BEVELLED TEGULAR Suprafine 15 mm /Silhouette grid section) in aluminium powder coated sections supported from ceiling (4'0"x4'0" grid for support rods) with necessary GI framework of every 2'0"x2'0" grid junction, proper levelling and finished of the joints & top surface as per manufactures specifications and all accessories, arrangements and etc. All edges shall be perfectly straight. Tile shall be carefully laid with neat arrangements like hand gloves and etc. Cost include replacement of damaged or stained tile. Cost include all necessary hardwares like nails, screws, wastages, transports, loading, unloading charges, labours, lead, lift, materials, tools and etc. Complete as per drawings and instructions of the Architect. MAKE- SAINT GOBAIN and ARMSTRONG.				
4	<b>False Ceiling Works (Gypsum)</b>	Sqft	665.00		
	Supplying and Erecting Saint Gobain Gyproc Gypboard false ceiling at different heights with saint gobain framework of G.I.Section (of medium thickness) of spacing 4'0"x2'0" above with 12.5 mm gypboard shall be fixed with all necessary fixing accessories, arrangements and etc. Rate shall include cut-outs for lights, ac and etc. The ceiling shall be putty finished and sanded to form clean and homogeneous surface. Cost include hidden lighting arrangements and etc. Rate to include painting two coats of acrylic emulsion of approved colour after necessary preparation, one coat of primer, full putty and tc. Cost include all necessary hardwares like nails, screws, wastages, transports, loading, unloading charges, labours, lead, lift, materials, tools and etc. Complete as per drawings and instructions of the Architect.				
5	<b>Meter Boxing (Only front face to be measured for payment purpose)</b>	Sq.Ft.	38.00		
	Manufacturing, supplying and fixing box type metre storage with overall depth of 1'6" and height as per the size of the mitre. comprising of the following.				
	<b>19mm BWP block board</b> hinged double shutter, height as size of the panel with alround beadings 3/4" x 1/2", powder coated handles, piano hinges, magnetic ball catches, lock, locking arrangement, tower bolts etc., all as per directions.				
	All visible surfaces to be fixed with 1.0mm thick lamination sheet with matching grains & grooves as per instructions				
	All internal & rear surfaces to be painted with two coats of enamel paint over a coat of primer/putty as directed to get a smooth finish and 4nos-6" wide Powder Coated 2 nos Aluminium Aircon Louvers.				
6	<b>Signage Size ( 7'-0" X 2'-6" )</b>	Sq.Ft.	17.50		
	Providing and fixing 1nos of neon board with 8mm neon with 4mm clear sheet having body material high dencity wpc sheet safety standard IPV6 Brighing soomthing including iron suport system for board ( Size as per site Conditions )				
A	<b>TOTAL ( A )</b>				





ESTIMATE FOR AIR- CONDITIONING PIPING WORKS				
1	Drain Water Piping Constructed out of PVC Hard Pipes, fitting, accessories, bends, elbows, tees, hanger, support, anchors, ISI approved Finolex/Prince Make (32mm)	RM	45.00	
2	Copper Piping Refrigerant along with insulator Piping for Hi Wall 1.5 ton, 1/2 and 1/4 Soft Copper Refrigerant piping with complete fitting, elbows bends supporting arrangements Nissan, Merchant, MET tube, Totaline tube, pressure tested tube and S.I.T.C. of 12.5 Sq.mm. & 6.25 Sq.mm. dia. Copper refrigerant pipe with foam insulation between Indoor & Out door units with breaking of wall for making hole wherever required For Split Air- Conditioners. And S.I.T.C. of 19 mm dia & 16 mm dia Copper Refrigerant Pipes with Foam insulation between Indoor & Out door units with breaking of wall wherever required for 2-3 Tr Cassette/ Inverter Air conditioners.	Rm	75.00	
3	S.I.T.C. of 4 core Copper conductor flexible cable between Indoor & Outdoor Unit through holes made as above	Rm	75.00	
<b>B</b>	<b>TOTAL ( B )</b>			
ESTIMATE FOR ELECTRICAL WORKS				
	<b>A - Light, Fan, 16A &amp; 6A points - All switch &amp; sokets shall be modular type complete with cover plate &amp; GI/ MS box.</b>			
	The work shall also include cutting chase for conduits in the wall/ floor (Without damaging the building/wall) along with clamping the conduit at every 750mm interval & finally finishing the surface & matching the same with the existing surface. (Items 1, 3, 4 & 5)			
	The rate should include the cost of all materials, labour, T&P, taxes & levies, scaffolding, shifting of furniture, carting away the debris and cleaning the floor etc.			
1	<b>L&amp;F Point Wiring, Circuit wiring &amp; Power Point wiring</b> <b>L &amp; F Points</b>			
	Primary Point Wiring for light points controlled thru modular switches complete with boxes & cover plate - The point wiring shall be carried with 3*1.5sq.mm FRLSH stranded Cu. Wires in 20mm PVC conduit pipe concealed in wall/ floor/ panelling/ partitions or above false ceiling as per requirement. The job shall include cost of circuit wiring with 3*1.5sq.mm FRLSH Cu stranded wires in 20mm OD PVC Pipe from nearest TPN Db to controlloing SDb. The job shall be complete & to the entire satisfaction of the Bank. Each Switch board should be provided with suitable capacity fuses/ fuse indicator	Point	15	
2	Secndray Light Point			
	Same as above but looped from PP with 3*1.5sq.mm FRLSH stranded Cu. Wires in 20mm PVC conduit pipe concealed in wall/ floor/ panelling/ partitions or above false ceiling as per requirement. The job shall be complete & to the entire satisfaction of the Bank.	Point	7.00	
2	6 A switch socket points on Sdb: S/F of 6A switch with 6A modular socket c/w MS box, sheet etc. The connections shall be made with 3 x 1.5sq.mm FRLSH stranded Cu. Wires as per requirement. The job shall be complete & to the entire satisfaction of the Bank	Point	2.00	
	<b>B - AIR CONDITIONING</b>			
1	AC Point: Providing AC points with circuit wiring with 3*4sq.mm FRLSH Cu stranded wires to be laid in 20mm PVC medium concealed in wall/ floor/ panelling/ partitions as per requirement. The work shall include S/F of MCB protected power unit for AC c/w 40A 2P MCB including proper connections. The job shall be complete & to the entire satisfaction of the Bank.	Point	4	
	PVC Insulated FRLSH Copper wire (ISI Marked)- Skyline/ Finolex/ Havells/ Polycab			
	PVC Conduit- CAP/ BEC/ Sieko/ AKG			
	MCB Protected Power unit c/w 10kA MCB "C"- Havells/ L&T/ Siemens/ Schnider			

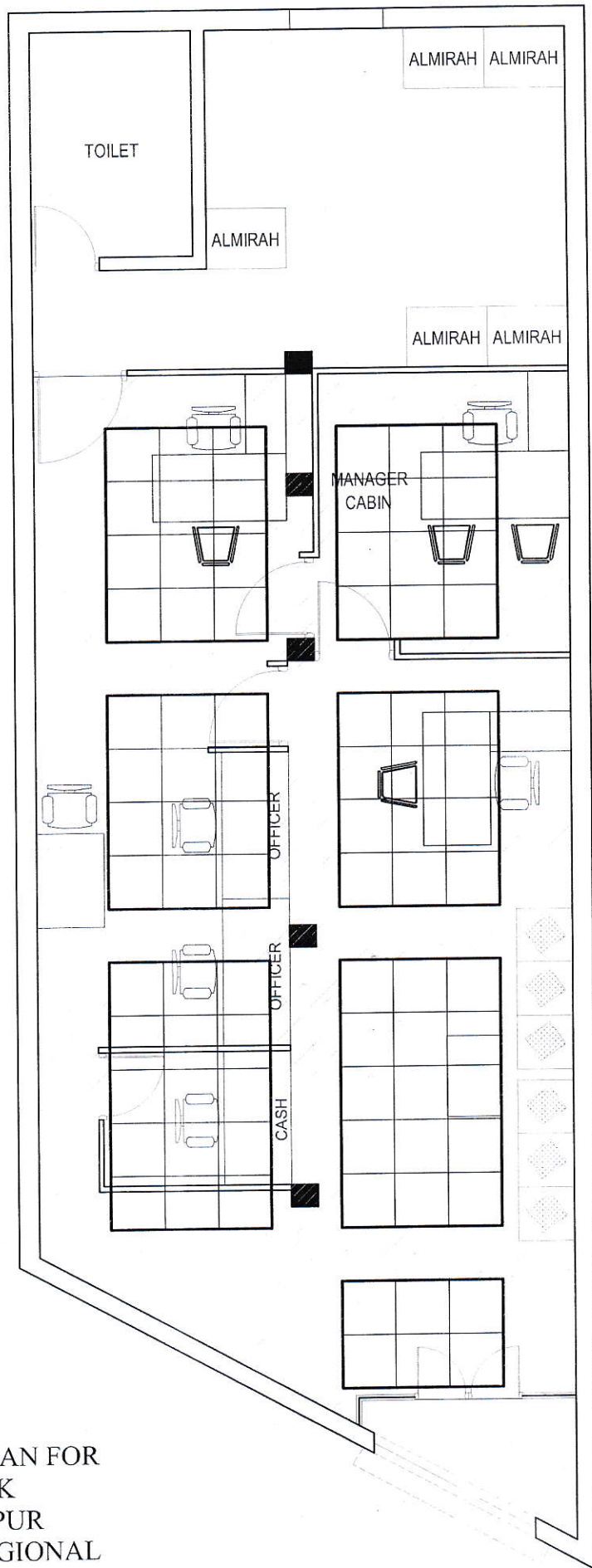


2	Wiring with 3*4.0sq.mm FRLSH stranded Cu. wires laid in 20mm OD PVC/ flexible pipe heavy duty laid on floor & concealed in wall/ floor as per requirement to various voltage stabilizers. The job includes making connections at both ends with proper size of lugs to the entire satisfaction of the Bank. PVC Insulated FRLSH Copper wire (ISI Marked)- Skyline/ Finolex/ Havells/ Polycab PVC Conduit- CAP/ BEC/ Sieko/ AKG	m	22		
3	AC 4way HTPN distribution Db double door suitable for MCB as incomer - Location Rear RHS Passage Incomer - 63A 4P MCB 5nos. 40A 1P-MCBs 10kA for AC's excluding Manager AC Blanking Plates - 7nos. (Manager AC thru LF Db's) Distribution Boards Double door in steel sheet housing - ABB/ MDS/ Lexic/ Siemens/ HPL MCB- 10kA "C" Characteristics L&T/ Siemens/ Schnider/ Legrand	Each	1		
<b>MAIN INCOMING PANEL &amp; DISTRIBUTION</b>					
1	S/F of 3 nos. 200A 415V Kit kats rewirable Porcelain fuse carrier & base Havell IHKRN4063 c/w 5 hole heavy duty terminals with shroud & cover including making of connection from electronic meter c/w wooden board etc.	Set	1.00		
2	S/ laying of XLPE insulated armoured Cu Conductor cable including cost of lugs, cable glands etc. The cable should be laid on surface with proper clamps @750mm or laid & concealed in wall/ floor/ PVC Conduit/ false ceiling complete in all respect. The work also includes cutting chases for conduits in the wall/ floor (Without damaging the building) along with clamping the cable. 4c x 16sq.mm from Mains to Ac DB	Metre	25.00		
<b>F - FIXTURES &amp; FITTINGS</b>					
1	S/F of Energy efficient recessed mounted LED luminaire - Ultra slim 40w LED panel made from extruded Aluminium housing frame recessed type 2 x 2' Jaguar - Sauver LSVR 01S 040 XC - 220-240V 50Hz or equivalent Wipro/ Crompton Greaves or any other make approved by Bank/ architect (Including Extension of Existing Light point on verticle wall)	Each	13.00		
2	S/F of recessed LED downlighter - Recessed mounted 12w LED Green LED1 down lighter Philips DN193B LED12S-6500 PSU WH S1 complete in all respects or equivalent Wipro/ Crompton Greaves or any other make approved by Bank/ architect (Including Extension of Existing Light point on verticle wall)	Each	18.00		
3	S/F of Surface & wall mounted LED batten - Ultra-slim poly carbonate decorative LED batten with inbuilt heat sink, anti glare polycarbonate diffuser & energy efficient electronic driver 20W 1800 lumens - Panasonic LED Batten light ABT 019206 or equivalent Philips Smart Bright BN021C LED20S PSU NW GR or any other equivalent make approved by Bank/ Architect	Each	4.00		
4	S/F of energy svaing/ efficient ceiling fan 600mm sweep double ball bearing type - Havells ES -50 Premium 5 star/ Bajaj Maxima 4 blade c/w Electronic modular regulator or any make as approved by Bank/ architect	Each	5.00		
5	Dismantling of Celing fan/ Lights and other Equipment required for False Ceiling to be done.	Job	1.00		
<b>C TOTAL COST OF ELECTRICAL WORKS</b>					
<b>GRAND TOTAL AMOINT (A+B+C)</b>					

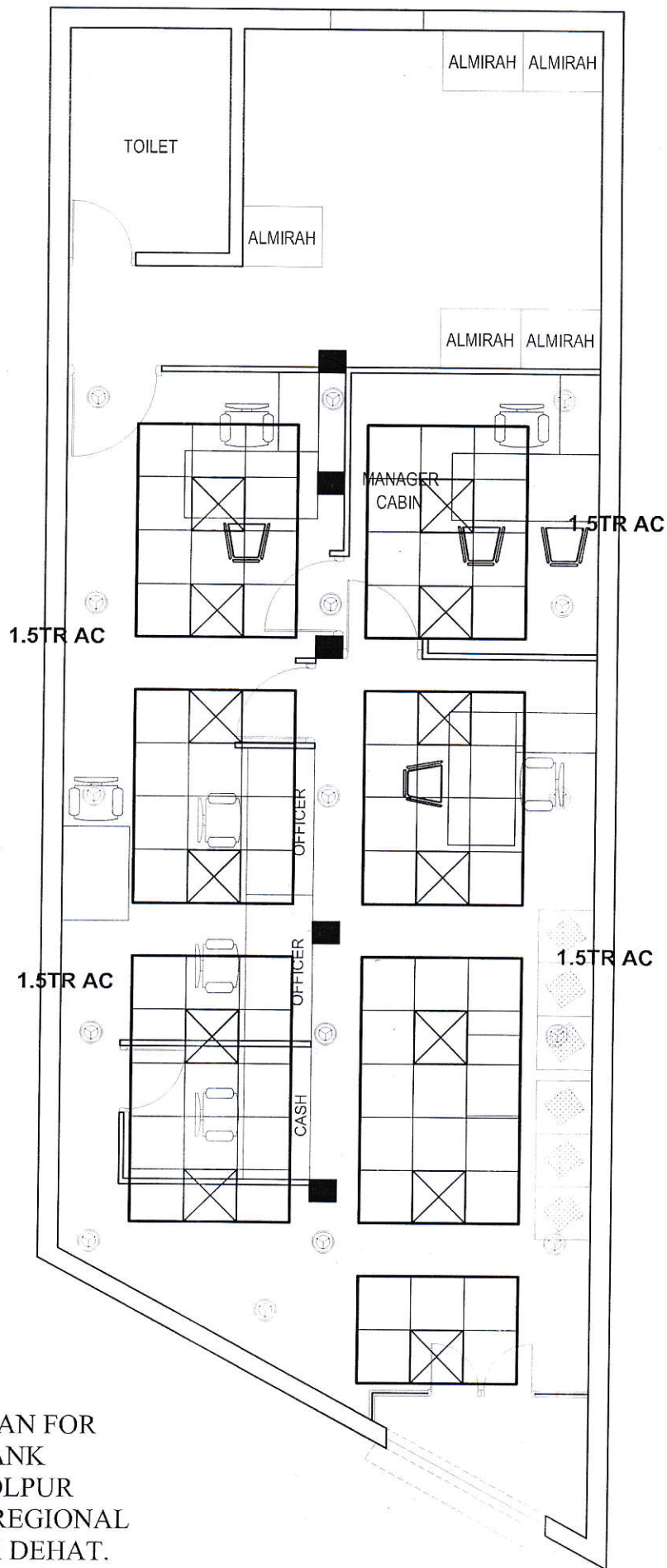
Note: All rates are excluding G.S.T.







FALSE CEILING PLAN FOR  
 BARODA U.P. BANK  
 BRANCH RASOOLPUR  
 GOGUMAU AT REGIONAL  
 OFFICE KANPUR DEHAT.



ELECTRICAL PLAN FOR  
 BARODA U.P. BANK  
 BRANCH RASOOLPUR  
 GOGUMAU AT REGIONAL  
 OFFICE KANPUR DEHAT.