

TENDER NOTICE

Baroda U.P. Bank, Regional Office Jaunpur, intends to invite Tenders from furnishers/applicants for the proposed **Furnishing/ interior and electrical works of our Branch-BUXA**, at Jaunpur as per enclosed offer Bid/BOQ proforma.

The completion period of work will be 21 days from the date of issue order. The work shall be executed under the supervision of our consulting Architect and as per specifications demonstrated in Offer Bid proforma/BOQ.

Offer Bid proforma/BOQ is attached with notice. Offer should be valid for a minimum period of 120 days from the last date of submission.No brokerage shall be paid.The sealed cover marked as Bid super scribing "**FURNISHING WORK BID FOR BUXA, BRANCH**" be put in one sealed envelope and other sealed cover marked as Bid super scribing "**ELECTRICAL WORK BID FOR BUXA, BRANCH**" be put in another one sealed envelope. Both sealed envelope addressed and submitted to **The Regional Manager, Baroda U.P. Bank Regional Office-Jaunpur, Pawan Plaza Civil Line Jaunpur U.P-222002** within 21 days from the day of publication of this advertisement /on or before 31-10-2022 by 05.00 P.M.

Any decision taken by bank at any point of time in connection with this process shall be final and conclusive and no claim or dispute from any quarter in that regard shall be entertained.

Date-07-10-2022
Enclosed: Offer Bid Proforma/BOQ

Regional Head

R.H.

03/10/2022

PROJECT - ESTIMATE FOR ELECTRICAL WORKS.

BANK - BARODA UP BANK

BRANCH - BAKSHA

PARTICULARS

Amount

Rate

Qty

Unit

A - Electrical wiring (All switches to be Modular type - Anchor/ Havells or equivalent approved by architect)

Light & Fan points

1 Supply & installation of concealed point wiring using 600v grade 3x1.5 Sq.mm copper conductor PVC insulated wires (with proper R, Y, B color code) pulled through heavy gauge 19mm PVC conduit pipe heavy duty concealed in wall/ floor/ partitions or above false ceiling as per requirement including 2 Nos. 2.5 sqmm circuit wires from the relevant DB and also including 1.5 sqmm green color copper earth wire and switch plate, switches, etc. as approved by the Bank's Engineer/Architect. All switch & sockets shall be modular type complete with cover plate & GI/ MS box. The work shall also include for cutting chase for conduits and moulded boxes, if required, in the wall/ floor (Without damaging the building/wall) along with clamping the conduit at every 600mm interval & finally finishing the surface & matching the same with the existing surface. The rate should include the cost of all materials, labour, T&P, taxes & levies, scaffolding, shifting of furniture, carting away the debris and cleaning the floor etc. The job shall be complete & to the entire satisfaction of the Bank

a Light points + AFF points including the cost of 6A switch

b Ceiling Fan Point including the cost of 6A Switch along with electronic regulator

c Wall Fan Point along with 6A switch

d 6A switch & Socket on SDB

2 RAW POWER POINT

Single Power Points - Supply & installation of point wiring for Raw power plug points on workstations / table for computers using 2 X2.5 + 1x1.5 Sq.mm copper conductor PVC sheathed flexible wire pulled through heavy gauge 19mm PVC conduit pipe heavy duty concealed in wall/ floor/ partitions or above false ceiling as per requirement. Each point consisting of 1 nos of 16A, 2/3/5 pin sockets & 1 No. 16A Switch wired together forming one point. The earth wire of green color only. All switch & sockets shall be modular type complete with cover plate & GI/ MS box. The work shall also include for cutting chase for conduits and moulded boxes, if required, in the wall/ floor (Without damaging the building/wall) along with clamping the conduit at every 600mm interval & finally finishing the surface & matching the same with the existing surface. The rate should include the cost of all materials, labour, T&P, taxes & levies, scaffolding, shifting of furniture, carting away the debris and cleaning the floor etc. The job shall be complete & to the entire satisfaction of the Bank.

3 MAIN INCOMING PANEL & DISTRIBUTION

A SITC of 100A Kit katas fuse unit 3nos in wooden patra complete with 100Amp. Neutral link complete in all respect as required.

1 No for Metre

1 no for Panel to Outer Side Of Wall (For Generator Connection)

B Main Incoming Panel

Supply, Installation, Testing & Commissioning of main

distribution board panel fabricated of 18swg (powder coated) comprising of

Indicator lamps 3 nos.

Voltmeter & ammeter(one each)

Rotary selector switches 2 nos for voltmeter & ammeter

Busbar (each of RYB +N) copper 100 amp each

125 Amp MCCB(Siemens/L&T/ABB/Schneider) incoming 3P adjustable 25kA

Changeover TPN 100 amp for DG set (Havells/ABB/Sochomac)

Outgoing 63A 3P MCB's - 6 nos.

Outgoing 32Amp 2P MCB's - 6 nos.

Earth bus bar 25x5mm GI strip - 2nos. At the bottom.

4 UPS

Handwritten initials and a checkmark.

Handwritten marks: A circle with a diagonal line through it and the number 13.

S.NO.	PARTICULARS	Unit	Qty	Rate	Amount
A	Existing UPS to be use				
B	UPS Power Input System: SITC of 4way TPN Double door Db IP 42 horizontal Complete with 1no. Incoming 32A, TP MCB and 3 x 32A 2P MCB's to regulate supply for UPS complete in all respect and to the satisfaction of the bank.	Set	1		
E	UPS Output Power Distribution System: SITC of 12 way SPN Db Double door IP 43 Siemens make with 32A DP 10KA MCB and 09 nos. SP 10KA MCB complete in all respect and as required & to the satisfaction of the bank. Siemens/L&T/ MDS/ Schneider	Set	1		
G	Supply & fixing of 4nos. 6A switches & sockets (Modular type c/w MS/GI box & cover plate) complete with computer point circuit wiring with 2x2.5sq.mm + 1x 1sq.mm stranded Cu. Single core Copper conductor (Finolex/Anchor/RPG) to be laid in PVC conduit 1" dia/ vertical drops heavy duty laid & concealed in wall/ floor/ panelling/ partitions or above false ceiling as per requirement.	Per Node	6		
E-EARTHING					
9	Existing Earthing to be use				
10	F - FIXTURES & FITTINGS				
A	a) Supplying and fixing Phillips make 36W LED FLAT PANEL 600x600 suitable for recess mounting, CRCA sheet, aesthetic looking, or eqv Phillips/havells	Each	0		
C	Supply installation testing and commissioning of 1*20watt Batten type tubular LED light fitting with LEDs, driver, diffuser, and housing complete in all respects	Each	18		
E	i) Supply & installation of wall bracket fan 450 MM (Heavy duty/ high speed) Make Bajaj/crompton greaves/havells/Orient (to be supplied after consultation with architect/Electrical Engineer as per approved drawing)	Each	2		
F	g) Supply & fixing of the 1200 mm 48") Sweep Ceiling fan (Orient PSpO/crompton greaves/havells) with downward rod(below false ceiling), canopy etc. including of PVC flexible copper wire (white colour)(High speed) (Warranty Certificate is necessary)with downward rod, circular boxes, ball sockets, ceiling plates,suitable arm bracket etc. including connection with wire)White colour (WITH REGULATOR)	Each	13		

H
D

S.NO.	PARTICULARS	Unit	Qty	Rate	Amount
G	Supply and fixing LED Bulb 9 watt	Each	4		
12	I- DATA CABLING				
A	Supply & Fixing of XL RJ 45 toolless information outlet with Duplex face plate with dual connectors Grey colour cat 6e including cost of supplying & laying CAT 6e (as directed by Architect from Server to Switch, Switch to computer I/O data socket as required complete in all respects) in 25mm dia rigid PVC conduit (including laying of GI draw wire complete with junction box, elbows, bends & other accessories as required by chase cutting on floor, wall, through partition or over false ceiling. The data cabling pipe should be laid at a minimum distance of 3ft from pipes laid down for power distribution) including interconnection with connectors as required complete in all respects.	Each	7		
B	Supply & fixing of 7ft Grey colour Patch chord Giga speed Systimax/ D link make	Each	7		
C	Supply & fixing of 3ft Grey colour Patch chord Giga speed Systimax/ D link make	Each	7		
D	S/F of 24Port Jack Panel fully loaded systimax make	Each	1		
E	S/F of 9 U wall mounted rack c/w fan etc as required	Each	1		
F	S/F of Cable Manager as required	Each	1		
	All Existing switches, Fans & tubelights which are in good condition to be use.				
GRAND TOTAL AMOUNT					

Handwritten marks: a checkmark and the number '4'.

8	Notice Board With wall fitting (Size 36"x36"x4")	Per Piece	1		
7	Suggestion Box With wall fitting (Size 12"x15"x6")	Per Piece	1		
6	Glass (A) 12.00 mm thick glass/Modi/ASI Co With name of bank(Plain Etching) including cost of all material, labours, tools and plant etc. (B) 12.00 mm thick glass/Modi/ASI Co With name of bank(colored Etching) including cost of all material, labours, tools and plant etc.	Per Sq.ft	38		
5	Low/Full Height Partition Frame of Chirwood of size 2"x1.5", 6mm thick ply 1.51 Shatabdi on both side frame, 1.00 mm thick mica GL/VL 1.51 mark, teak wood bedding, Polish/Painting including cost of all material, labours, tools and plant etc with 12mm glass	Per Sq.ft	280		
4	UPS PARTITION WITH BISON BOARD HT 4'-6" REST SPECIFICATION AS PER AS PER ABOVE PARTITION	80.00 Per Sq.Ft			
3	Counter (Passing, Cash, Posting etc) Width of counter is 30", and height & Writing top of counter is 30", Public Counter 9"x 9" with two drawer of size 16"x6"x18" with telescopy runner and one cup board of 14"x16"x18" all locking system and magnet 1.00 mm thick mica GL/VL at front portion of counter in vermillion color & grey color with teakwood bedding, 19.00 mm ply board Key Board C.P.U Stand with all counter as shown in map including cost of material, labours tools & plants etc(Shatabdi Co. Ply 1.51 mark and mica Greenlam/Vergolan)	Per running ft	20		
2	Full height Cash Cabin with Glass Cash Cabin partition made of both side 6.00 mm commercial ply on Kail/Chir wood Sleeper frame of section 50x35 mm & 1.00 mm thick micaover the ply with fixing of 12.00 mm thick Glass including cost of all material,	Per Sq.ft			
1	Full height Cash Cabin with Aluminium Grill partition (a) Cash Cabin partition made of both side 6.00 mm commercial ply on Kail/Chir wood Sleeper frame of section 50x35 mm & 1.00 mm thick mica over the ply with aluminium grill partition make the provision for door shutter and fix the aluminium grill of cabin including cost of all material, labours tools & plants etc. (b) Fix the aluminium grill on the ceiling of Cash Cabin including cost of all labours, tools & plants etc.	Per Sq.ft	152	Per Sq.ft	42

OF FURNISHING WORK FOR BARODA UTTAR PRADESH BANK BAKSA BRANCH.

DETAILED ESTIMATE

Ref No.: BA/BUPB/ROJ/2022

Dated 07-10-2022

Bharat and Associates.
 Architects, Engineers, Interiors &
 Landscape Designers,
 Shop no-1, First Floor, Jeevan Plaza,
 Vram Khand-5, Gomi Nagar, Lucknow-226010
 E-Mail: bharatandassociatesko@gmail.com

DETAILED ESTIMATE

OF FURNISHING WORK FOR BARODA UTTAR PRADESH BANK BAKSA BRANCH.

Sl. No.	Description	Unit	Quantity	Rate	Amount
9	Public Writing Table- (Size 36"x24"x42") Teak wood, 19 mm board, 1.00 mm thick mica GL/VL teak wood bedding including cost of all material, labour tools and plant etc.	Per Piece	1		
10	Public Writing Table Round Shape- (Size 36"x36"x42") Teak wood, 19 mm board, 1.00 mm thick mica GL/VL teak wood bedding including cost of all material, labour tools and plant etc.	Per Piece	0		
11	Public settee size 60"x 18"x18" Teak wood, 19 mm thick board, 1.00 mm thick mica GL/VL teak wood bedding including cost of all material, labour tools and plant etc. with 3" foam sleep well 32 density and covering cloth of superior quality.	Per Piece	3		
12	Handle lock ISI marked including cost of fitting (1)brass (2)stainless steel.	Per Piece	1		
13	Night latch lock ISI marked including cost of fitting.	Per Piece	4		
14	Door closure ISI marked including cost of fitting	Per Piece	1		
15	Capsule Door closure ISI marked including cost of fitting	Per Piece	0		
16	Door latch ISI marked including cost of fitting	Per Piece	12		
17	Door stopper ISI marked including cost of fitting	Per Piece	6		
18	Filler covering with 19.00 mm tick ply, 1.00 mm tick sumnica, teak wood bedding including cost of all material, labors, tools & plants.	Per Sq.ft	0		
19	Cheque drop box including cost of fitting (size 12"x15"x6")	Per Piece	1		
20	Center Table with teak wood and 10mm glass ISI(size 48"x24"x18")	Per Piece	1		
21	Public writing wall stand (including cost of fitting) 36"x16"x9" 19mm Board, 1.00 mm thick mica, teak wood bedding, Polish/Paint with fitting.	Per Piece	1		
22	Wall covering with 19mm ply, 1.00mm thick sumnica and teak wood including cost of all material,labour,tools and plants etc.	Per Sq.ft	225		

Handwritten signature and stamp.

DETAILED ESTIMATE

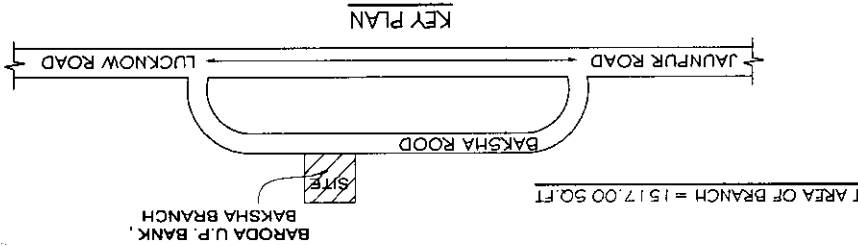
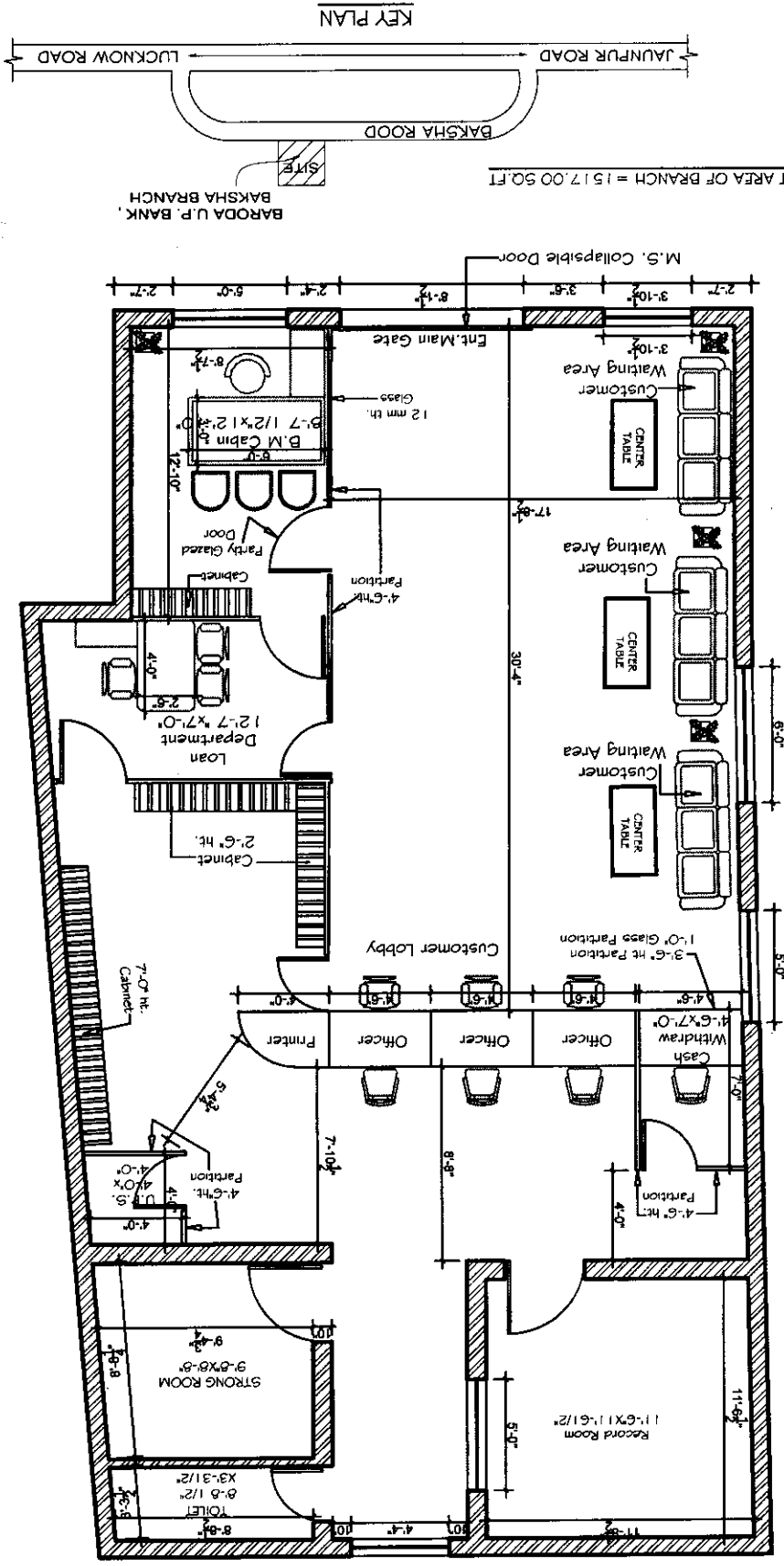
OF FURNISHING WORK FOR BARODA UTTAR PRADESH BANK BAKSA BRANCH.

Sl. No.	Description	Unit	Quantity	Rate	Amount
23	Aluminum entrance door with partition made of aluminum section of Hindalco/ Jindal 1.75"x1.75" and 1.5 m with 5mm thick glass with door made of door section 1.75" x 1.75" and door bottom 4.5"x1.75" (114mmx4mm) with 5mm glass complete with lock, door closures, tower bolt and handles etc.	Per Sq.ft	125		
24	False Ceiling Providing and fixing false ceiling 12.5 M.M. thick gypsum tiles sheet ISI mark with GI channels along with screw and fixed to the wall/partition with roll plugs and screw. Together with making provision for light, fan AC diffusers Etc. the work shall include cost of all materials labor etc.	Per Sq.ft	0		
25	Wooden table with side rack : (60"x30"x30") 19 M.M. board, 1 M.M. Sunmika of ISI mark, key board side cup board, 1 pc drawer, polish paint with 8 M.M Glass top.	Per Piece	1		
26	Wooden table with side rack : (54"x30"x30") 19 M.M. board, 1 M.M. Sunmika of ISI mark, key board side cup board, 1 pc drawer, polish paint with 8 M.M Glass top.	Per Piece	0		
27	Full height storage / low height storage/ back storage (credenza)	Sft	150.00		
	Providing and fixing in position full height storage / low height storage / back storage (credenza) as shown in drawing no. (8) (9) and (10) respectively using plywood of required thickness finished with 1 mm thick laminates as shown in the drawing and all other sides shall be finished with white enamel paint as detailed therein.				
	The storage units shall be provided with handles (stainless steel finish) as per approval of the project consultant/bank.				
	All exposed plywood surfaces to be finished with 1 mm thick Laminate of approved make and shade and all exposed edges of plywood to have 1"x1/4" TW lipping. all exposed TW section to be melaminated in matching colour laminate and internal surfaces to have white enamel paint as directed. item to include all necessary hardware an fittings in stainless steel finish. Godrej multi purpose locks including magnetic ball catcher etc. complete in all respect.				
Grand Total:					

5, Tagore Town Bhojpur varanasi
 BHARAT & ASSOCIATES
 Ph.0542-2505982 M. 9415221355

Date: August, 2022
 Drawn By: [Signature]
 Option: 1
 Dra. Title: LAYOUT PLAN

JOB TITLE: PROPOSED LAYOUT PLAN FOR BARODA U.P. BANK, BAKSHA BRANCH



Handwritten notes and a signature in the left margin.