

RO/KAND/05/P&E/2024-25/95



**बड़ौदा यू.पी. बैंक**  
**Baroda U.P. Bank**  
Date 22-07-2024

**SHORT TERM TENDER NOTICE**  
(For Empanelled Furnishers & Interior Decorators only)

**INTERIOR DECORATION WORK IN PAHADIPUR BRANCH OF**  
**BARODA U.P. BANK**

**IMPORTANT DATES**

DATE OF ISSUE OF TENDER NOTICE	22.07.2024
LAST DATE AND TIME OF SUBMISSION OF TENDER	14.08.2024 up to 05:00 P.M.
DATE OF OPENING OF TENDER (FINANCIAL BID)	16.08.2024 at 03:00 P.M.

**Baroda U.P. Bank**  
Regional office Kanpur Dehat  
Nabipur, Jainpur Kanpur Dehat  
209311(U.P.)

  
**Chief Manager**

**Date: 22.07.2024**

## **NOTICE INVITING TENDER**

Sealed item rate short term tenders are invited on behalf of the Regional Manager, Baroda U.P. Bank, from the Furnishers & Interior Decorators having valid Empanelment with the Baroda U.P. Bank for the work of INTERIOR DECORATION WORK IN PAHADIPUR BRANCH OF BARODA U.P. BANK, Regional Office Kanpur Dehat.

1. Issue of tender documents : 22/07/2024 to 14/08/2024
2. Last date of receipt of tender documents : 14/08/2024 up to 5.00 PM
3. Date of opening of tender documents : 16/08/2024 at 03.00 PM
4. Place of submission & opening of tender : Baroda U.P. Bank, REGIONAL OFFICE, KANPUR DEHAT
5. Period for completion of work from order date : Maximum 30 days
6. Retention percentage : 10% (Ten percent) from final bill
7. Defect liability period : 12 months from the date of completion certificate issued by the Bank Architect.
8. Release of retention money : After 14 days from defect liability period.

## SUBMISSION OF TENDER

The tenders are to be submitted in a sealed envelope and clearly superscribed as "Tender for FURNISHING & INTERIOR DECORATION WORK IN PAHADIPUR BRANCH OF BARODA U.P. BANK, REGIONAL OFFICE, KANPUR DEHAT.

- Bids must be submitted through hand to hand or through registered Post.
- The bid must contain two Envelopes as per procedure given below

### FIRST ENVELOPE MUST CONTAIN ALL THE DOCUMENTS GIVEN BELOW:

1. Photo copy of PAN Number duly attested.
  2. Photo copy of GST Number duly attested.
  3. Registration certificate of both work i.e 'furniture & fixture work' and 'Electric & data cabling work
  4. All the documents should be self attested along with stamp of the Firm.
- IT MUST BE MENTIONED ON ENVELOPE "DOCUMENT SUBMITTED FOR BID OF FURNISHING & INTERIOR DECORATION WORK IN PAHADIPUR BRANCH".

### SECOND ENVELOPE MUST CONTAIN ALL THE DOCUMENTS GIVEN BELOW:

SECOND ENVELOPE MUST CONTAIN only price bid and nothing else.

- The price must be submitted on the prescribed format
- Price bid will not be accepted on any other format or document.
- It must be clearly mentioned "PRICE BID OF FURNISHING & INTERIOR DECORATION WORK IN PAHADIPUR BRANCH".

**BOTH TWO ENVELOPES MUST BE KEPT IN THIRD SEALED ENVELOPE AND SUPERSCRIBED "BID FURNISHING & INTERIOR DECORATION WORK IN PAHADIPUR BRANCH".**

### GENERAL INSTRUCTIONS TO TENDERERS

#### Time of Work Completion- One Month (From the date of work order)

1. The work as detailed in this tender shall be executed and completed in all respects within one month in accordance with the Tender Document, Bill of Quantities, Drawings and Instructions, to the satisfaction of the Architects and the Bank. A penalty of 1% per day of total work awarded will be imposed for delay in work completion.
2. The term "Contractor" shall mean the successful tenderer to whom the Contract shall be awarded.
3. The Contractor should quote the rates in figures and words. Any corrections or Over-writing should be initialed by the Contractor.
4. The Contractor should submit the tenders with seal, signature and date on each Page.
5. The Contractors should submit the cost of the main items as per tender specifications. Further modification after awarding of the contract shall be not allowed unless there is specific instruction



- by the Bank/Architect to change specifications.
6. The contract is time-bound and the works are to be completed within the time limit specified in the notice inviting tenders. This is a working office and the contractor has to work with no or minimum obstruction to its regular services.
  7. The decision of Employer and the Architect is final and binding.
  8. The contractor must submit registration certificate of both work i.e 'furniture & fixture work' and 'Electric & data cabling work' in separates envelope must be mention "Technical Bid for furnishing & electrical work".
  9. The contractor must submit the tender for both work i.e 'furniture & fixture work' and 'Electric & data cabling work', Partially filled tender will be rejected.
  10. **For Electrical fixtures and light points required as per drawings the contractor has to draw the wires from the existing positions of light points, power points wherever and if applicable. The contractor shall submit the certificate from electrical contractor holding required license/certification from directorate of electrical safety (U.P.)/competent authority of any other State.**

#### **TERMS & CONDITIONS**

1. Unless otherwise mentioned, all works are with no allowance for Lapse waste. Unless otherwise described or measured separately, price for all the items shall include all necessary straight & curved edges.
2. Any damage to the work before the site is handed over, is to be replaced or made good at the expense of the contractor to the entire satisfaction of the Architect/Bank.
3. Income Tax, Other Tax as applicable shall be deducted at source as per the Income Tax Act / Rules.
4. The quantities indicated are subject to change. The payment of the bill shall be made as per the actual measurement as certified by the architect but not exceeding the total value quoted in the tender form.
5. The Architect or any officer of the Employers will be free to inspect the work at the site during the period of execution. Any suggestion of change or modification to improve the quality of work will be carried out subject to prior approval of the competent authority of the employers and that of the Architect.
6. Incase of failure to take up the work even after accepting the work order, or leaving the work incomplete, or for defective work not rectified, or violation of the terms and conditions, the contractor will be de-panelled/blacklisted.
7. For any item of work not covered or any unforeseen items of work, payment will be made according to the rates approved for similar nature of work, the costing done by the Architect, as per current PWD schedule of rates, or as per analysis of material cost, labour rate and profit to the Contractor at 10%. The Contractor must obtain prior approval in writing before undertaking such additional works.

8. The tenderers shall sign each & every page of the tender documents including the drawings attached here to.
9. The amount is to be quoted in figures as well as in words. In case the rates quoted in words and in figures are in variance, the amount written in words shall be taken as final.
10. The Contractor shall make their own arrangement at their own cost for storing materials, plants, tools etc. The employers will not be liable for security of the Contractor's materials.
11. No tools or plants will be issued by the bank.
12. The Employer / Architect reserves the right to accept or reject any tender without assigning any reason whatsoever and the said decision shall be final and binding upon the tenderer.
13. In case of breach of contract by the Contractor for slow progress of works or any other claim of damage, the Employer or the Architect may have the power to rescind the contract without furnishing further reasons thereof.
14. The Architect shall have the power to ask the contractor to furnish the sample/ color / test certificate from any Govt. /Authorized agent for any materials used/ to be used in the Works, the expenditure of which is to be borne by the Contractor.
15. The Employer shall be not be liable for any damages or compensation payable as a consequence of any accident or injury to any workman or other persons in the employment of the Contractor or any sub-contractor.
16. On completion of the Works, all rubbish, debris, materials, tools, Laborers, etc. to be removed by the contractor from the site and the contractor will hand over the site clean & clear & in usable condition within 3 days of completion of the works. Failing this, the employer may
17. Dispose the materials at the cost of the contractor.
18. In case of any dispute, the matter will be referred to the Regional Manager, Baroda U.P. Bank, Regional Office Kanpur Dehat (UP).
19. Final Payment after completion of Project will be done with the certificate of Architect with deduction of retention money by the Bank.
20. The rates quoted in the tender shall exclude GST but include all excise tax, No escalation of rates will be allowed under any circumstances.

\*\*\*\*\*



**Estimate for Furnishing works for Baroda U.P. Bank**

**Branch at Pahadipur**

**Region - Kanpur Dehat**

- 1.No offsite prefabrication shall be allowed in any case. All fabrication shall be done at the site after getting the materials inspected by the architect.
  - 2.No payment shall be made for any in completed or unsatisfactory work.
  - 3.The Contractor should strictly follow the Booklet requirements of the Bank.  
including the detailed drawings in the booklet. Any discrepancy between the booklet and the Specifications below should be brought to the notice of the
  4. List of material to be strictly as per the booklet.
  5. Cable Managers to be provided in the tables and Counters wherever required.
  6. **All underframe should be properly treated with antitermite and waterproofing material.**
  7. All Locks in the drawers and doorsetc.should be of Godrej.
  8. All keyboard Trays and Drawers to be on Channel Sliding Mechanism.
- \*The contractor to follow the banks colour Coding. Any other specified colour to be superceded by the Banks Colour code.**
- \*All board to be BWP. Of approved brand and if written BWR it should be superceded by BWP board/ply.**

S.No.	Description of item	Unit	Qty.	Rate	Amount
1	<b>Branch Manager Table with Side Table.</b> Size -5'-0" (L) X 2'-6" (W) X2'-6" (H) Providing and placing in position table made of phenol bonded 19mm thick commercial board with top front and sides finished in 1.0 mm Thick laminate and 12mm thick toughened glass on top. The front facade of the table to have 6 mm thick and 29 mm wide moulding. Every table shall be provided with a key board, drawer, and a cabinet with a shutter below W-375mm, H-750mm, Depth- 500mm. The storage unit shall consist of provision for C.P.U. 600X250 size Keyboard to be made of 19 mm thick commercial board and finished Drawers and a cabinet with a shutter below W-375mm, H-750mm, Depth-500mm. shall consist of 12 mm thick commercial board for bottom, sides and back of 19 mm thick phenol bonded commercial board with laminate in front and shall slide on tray system provision (sliding mechanism).  All the units shall be provided with all the necessary hardware as approved by the Architect. such as knobs, handles, etc. All unexposed surfaces to have two coats of synthetic enamel paint with primer and base, all complete, specifications and directions of the engineer in charge.	NOS.	1.00		
2	<b>Officer Table without side table with 12 mm thick bevelled glass on top.</b> Size-4'-6" X 2'-6" X 2'-6" Other specifications as above 1	No	1.00		
3	<b>Cash Cabin Partition (HT-7'-0" ONLY)</b> Providing and fixing of Cash Enclosures at height of 7'-0" with Anodized aluminium frame work, heavy sections (2mm thickness) of 2"x1.5", spacing of 2'0"x2'0" on bothsides and covered 6mm thick BWP plywood finished with 1mm thick laminate of approved colour. Partition shall have provision for opening and 19mm BWP plywood tray for challan receiving purpose. Cost include aluminium grill and fixed with teak wood beading and duco paint. Cost also include 3 Nos of Solid core flush Doors with sizes of 2'6"x7'0", fixed in the partition. Door shall have teak wood beading and lipping with duco paint. Door finished with 1mm thick laminate of approved colour for skirting of approved pattern. Door shall have 8mm glass fixed with teak wood beading and duco paint. Rate to include hardware's like brass hinges, godrej three nos of night latch, door closure, door stopper and handles. Cost also include cash transaction opening shall be provided with door arrangements made with BWP plywood frame work finished by laminate, duco paint and locking system. Cost include wastages, transports, loading, unloading charges, labours, materials, tools, lead, lift and etc. Complete as per drawings and instructions of the Architect.  Decorative Grill (12mm thk)-hexagonal opening as per instruction of Bank's Engineer/Architect.) All exposed edges of Plywood shall be fixed with 1/8" C.P. Teak Lipping.	Sq.ft.	182.00		
4	<b>Cash Counter</b> Bank counter of approved design for cashier made of 19.00 mm commercial block board and mica 1.00 mm thick of approved brand and colour on front customer top and writing desk. Height of counter from customer side 114cm (45"). width of writing desk 75cm.(30") with provision of cupboard after every 1.20 mts made of 19.00 mm block board with 1.0 mm sunmica pasted on both side (inner and outer), and teakwood beading complete with quality polish finish. Mica pasted on both sides external & internal including all locks & handles with door closer.	Rft.	5.00		
5	<b>Front Counter</b>	Rft.	5.50		



	Front counter made of 19.00 mm block board with table top at the height 75 cm and 80 cm wide sunmica 1.0 mm on top and cup board and sliding key board with provision of fixing of glass in front. Mica pasted on both sides external & internal including all locks & handles.				
6	<b>Cash Cabin-Aluminium Grill Top with teak Decorative Grill Partition).</b>	Sq. ft.	47.00		
	Providing and fixing of Aluminum grill work in cash counter top with all necessary fixing support of 'L', 'H' and 'C' aluminium sections and etc. Cost include 'L', 'H' and 'C' aluminium sections, hardwares, tools, wastages, lead, lift, labour charges, loading, unloading charges, cutting, transport and etc. Complete as per instructions of the Architect.				
7	<b>12 mm Glass on Front Counter &amp; Cash Counter</b>	Sq. ft.	33.00		
	12 mm float glass with rounded edges with etching as per the requirement of bank for Front counter (Height: 60 cms) (With teak wood frame 70 cm).				
8	<b>Full height glazed/Unglazed partition including door as per design All partitions to have etching/3M film as per the design of the Architect.</b>	Sqft	165.00		
	Glazed Partition (upto false ceiling height only considered and above necessary ceiling supports to be provided) with Anodized Aluminium frame work, heavy sections (2mm thickness) of 2"x1.5" section, spacing of 2'0"x2'0" on bothsides and covered with 9mm thick BWP plywood of standard make finished with 1mm thick laminate of banks colours for skirting & borders on both sides and approved colour laminate for base colour on both sides. Above 1'0"/2'6"/3'0" height partition, <b>fixed with 8mm toughened glass with etching/ film of 3M as per design</b> and teak wood beading of size 1.5" /0.5" with melamine polish. Rate to include providing cutouts and provisions to run electrical conduits, switches, etc. Cost include wastages, transports, loading, unloading charges, labours, materials, tools, lead, lift and etc. Complete as per drawings and instructions of the Architect.				
	The job shall also include for provision of laying conduits, switch boxes etc. The erection of partition shall include for expansion bolts cleats, clamps bolts, nuts, screws, rivets and other accessories, all complete up to the satisfaction of the Architect.				
	The partition and doors shall have hinges floor springs /sliding arrangement /hydraulic door closer, mortise locks with handle set (Godrej, Dorma make all), etc.The rate shall include cost of all materials, labour, T&P, wastages, etc.required for proper completion of work, all complete to the satisfaction of the Architect.				
	Full height Solid partition (height 8'-6"or ceiling height) with Anodized Aluminium frame work, heavy sections (2mm thickness) of 2"x1.5" sections, spacing of 2'0"x2'0" on bothsides and covered with 9 mm thick plywood finished with 1mm thick laminate of approved colour for skirting & borders and laminates for base on both sides with all necessary fixing accessories, arrangements and etc. Partition shall have necessary opening of approved size as per standards for fixing machine' s and additional frame to be fixed for strengthening the partition. Rate to include providing cutouts and provisions to run electrical conduits, switches, etc. Cost include wastages, transports, loading, unloading charges, labours, materials, tools, lead, lift and etc. Complete as per drawings and instructions of the Architect. This would include provision of teak wood chaukhat for provision of semi glazed glass door with logo of Bank.				
9	<b>Low Height Partition up to 3'-6" ht. glazed/Unglazed partition</b>	Sq.ft.	160.00		
	Half Height partition to be made with Anodized Aluminium frame work, heavy sections (2mm thickness) of 2"x1.5" sections, spacing of 2'0"x 2'0" on bothsides and covered with 9mm thick BWP plywood finished with 1mm thick laminate of approved colours for skirting & borders and white colour laminates for base on both sides with all necessary fixing accessories, arrangements and etc. Partition shall be block partition till 3' ht. and 1'-6" glazing. It shall have 12mm thick etched glass and fixed with teak wood beading with melamine polish. Clear glass shall be finished with frosted film sticking over the glass of approved pattern and design. Rate to include providing cutouts and provisions to run electrical conduits, switches, etc.Cost include wastages, transports, loading, unloading charges, labours, materials, tools, lead, lift and etc. Complete as per drawings and instructions of the Architect.				

10	<b>Storage (Full Height)</b>	Sq.ft.	167.00		
	Size-2'-6" highX 1'-6" deep				
	Size-8'-6" highX 1'-6" deep				
	Ply Wood -19.0mm thick board for side top and door & back 6.0mm IS 303 with shutters, shelf 19.0mm ply				
	Shelf-19.0mm thick MR Grade IS303 ply				
	Handle-Brush finish stainless steel				
	Lock-Vijayan/Godrej				
	Internal surface zinc oxide polish and other required accessories instructed by Bank's Engineer / Architect.				
11	<b>Column / Wall Panelling (Meter Boxing with proper locking system, 2 nos. of air-con louvers &amp; all necessary accessories)</b>	Sq.ft.	180.00		
	Column Panelling 8'-6"/Wall Panelling 3'-6"only considered with Anodized Aluminium frame work, heavy sections (2mm thickness) of 2"x1.5", spacing of 2'0"x2'0" on bothsides and covered with 9mm thick BWP plywood finished with 1mm thick laminate colours for skirting & borders,. Rate to include providing cutouts and provisions to run electrical conduits, switches, etc. Cost include necessary hardwares like clamps, screws and etc. Cost include provisions for electrical db closing 19mm BWP plywood door arrangements,wastages, transports, loading, unloading charges, labours, materials, tools, lead, lift and etc. Complete as per drawings and instructions of the Architect.				
	Meter Boxing (Only front face to be measured for payment purpose) Size 3'-6"x 4'-6"				
12	<b>Notice Baord</b>	No.	1.00		
	Notice Board made of 19.00 mm board (size: 3'-0"x3'-0") laminated sides andcovered by good quality Cherry Colour Velvet with attached Cheque Writing Desk (6"x6"x9") with attached Two Battens for Support, Sunmica Pasted on all sides.				
13	<b>Writing Desk Including Suggestion Box and Cheque Drop Box</b>	No.	1.00		
	Writing ledge of 19 mm Phenol bonded board as/design on 19 mm thick with pockets for slips of 6mm glass machine polished with seperators completed to the satisfaction of the architect and the Drawing. The Writing ledge includes a Suggestion box below, cheque drop box and a notice board above complete to the satisfaction of the Architect.				
14	<b>Hydraulic Door Closure. (to be Godrej)</b>	No.	1.00		
	Providing and fixing of hydraulic door closure (Make-Godrej, Product Code-4539 or equivalent) for doors. It shall incorporate the following -				
-	Body manufactured from Aluminium extruded alloy machined to extreme accuracy.				
-	Rack and Pinion-made of machined alloy steel duly heat-treated.				
-	Adjustable closing speed.				
-	Suitable for right hand and left hand opening doors.				
-	Suitable for door / frame mounting.				
-	Suitable for door weight up to 60 kgs.				
-	Suitable for 180 / 100 degree door opening.				
-	All complete to the satisfaction of the Architect.				
	<b>Total</b>				

Note: All rates are excluding G.S.T.



**Estimate for Electrical works for Baroda U.P. Bank**

**Branch at Pahadipur**

**Region - Kanpur Dehat**

S.NO.	DESCRIPTION OF ITEM	QTY	UNIT	RATE	AMOUNT
1	SITC of 100Amp Kit kat Fuse unit 3 nos with 200 Amp neutral link on wooden board (3' x 3') complete with connections (new).	1.00	Set		
2	ELECTRICAL DISTRIBUTION Db SITC of 6way Vertical TPN DB complete with 100Amp 16kA TPN MCCB as Incomer, 63A TP 10kA MCB -4 Nos and 6-16Amp S.Pole 10kA MCB-3 Nos as outing complete in all respects as required The job shall be completed, to the satisfaction of the Bank Engineer/Architect.	1.00	Set		
3	<i>Changeover:</i> S/F of 63A 4P changeover near Main Db for regulating DG supply including proper connections.	1.00	Each		
LOM	Changeover Switch- C&S/ Havells/ L&T/ HPL				
<b>2</b>	<b>UPS I/P, O/P AND DISTRIBUTION</b>				
a.	SITC of 40/32 AMP industrial socket along with DPMCB for UPS & Inverter I/P	2.00	Nos.		
b.	SITC of 20AMP industrial socket along with MCB for UPS & Inverter O/P	2.00	Nos.		
c.	SITC of 12 WAY SPN DB Double Door (1 No. 40 AMP DP MCB and 10 NOS. 6-10 AMP SPMCB) (Branch UPS Power Distribution for UPS Points at CCTV System in BM Cabin (2nos.), F&B Alarm System (2nos.) and 9U Rack(2nos.), and Staff counters (2nos.).	1.00	Nos.		
d.	SITC of 63Amp Rotary Phase selector switch complete with RYB indication lift in incloser complete in all respects as required. (Branch UPS)	1.00	Nos.		
<b>3</b>	<b>RAW POWER &amp; FAN, LIGHTING DB &amp; AC DISTRIBUTION BOARD</b>				
a.	4 WAY TPN DB Double Door (1 No. 20 AMP TP MCB and 12 Nos. 6-10 AMP. SPMCB in each outgoing circuit for Light, Fan & 6A Socket 15A Power Points,) all complete.	1.00	Nos.		
<b>4</b>	<b>CABLES</b>				
a.	SITC of 3.0 Core 25.0 Sq.mm Aluminium Armoured Cable (From Electric Meter to Electric Panel), complete with end termination and all respect as required.	13.00	Mtr.		
b.	SITC of 4 x 6.0 Sq.mm Copper Wire + 1 x 4.0 Sqmm Copper Earth Wire (Panel to UPS Incomer, LDP and UPSDB) in PVC Pipe fixing on walls or chassing the walls and making it good with cement mortar of 1:5 ratio and painting compete with end termination/lugs and in all respect as required.	35.00	Mtr.		
c.	SITC of 2 x 6.0 Sq.mm Copper Wire + 1 x 2.5 Sqmm Copper Earth Wire (Rotary Switch to UPS and UPS to UPS DB) in PVC Pipe fixing on walls or chassing the walls and making it good with cement mortar of 1:5 ratio and painting compete with end termination/lugs and in all respect as required.	50.00	Mtr.		
<b>7</b>	<b>EARTHING</b>				
a.	PIP technology GEL type 50mmdia 3000mm long earth electrod. One Earthing for Neutral grounding.	2.00	Nos.		
b.	4 Sq.mm Copper Earth Wire from earthing pit /Earth terminal to load point (UPS DB and Main DB etc)	40.00	Mtr.		
<b>8</b>	<b>UPS POINT</b>				

a	Supply & Installation of point wiring for <b>Primary UPS</b> or stabilized power plug points on workstations / table for computers using 3 x 1.5 Sq.mm copper conductor multi stranded FR PVC sheathed flexible wire pulled through floor raceways/conduit and taken upto table top using PVC rigid or flexible conduits run within wooden/metal partitions. Each point consisting of 2 nos of 10A 3 pin sockets, 1 nos 16A 2/3 pin sockets, 1 nos 16A Switch (Modular) & 1 nos indicator, wired together forming one point. The earth wire of green color only. No secondary UPS Points to be made.	6.00	Nos.		
<b>9</b>	<b>RAW POWER POINT 16A SOCKET POINT IN WALL ONLY</b>				
a.	Supply & Installation of point wiring for <b>Primary Raw</b> power plug points on walls only for computers using 2X4+1X2.5 Sq.mm copper conductor PVC sheathed flexible wire pulled through already laid floor raceways and taken upto table top using PVC rigid or flexible conduits run within wooden/metal partitions. Each point consisting of 2 nos of 16A 2/3/5 pin socket & 2 nos 16A Switch (Modular), wired together forming one point. The earth wire of green color only. No secondary Points to be made. <b>( Only 1cash, 1B.M. 1Officer,1router )</b>	4.00	Nos.		
b	Strong room controlling DP MCB - Circuit wiring with 3*1.5sq.mm FRLSH Cu stranded wires to be laid in 20 mm OD PVC medium duty laid & concealed in wall/ floor/ panelling/ partitions or above false ceiling as per requirement. The job also includes supply & fixing of 32A 2P MCB in 2way metallic box including connections with lugs. The job shall be complete & to the entire satisfaction of the Bank.	1.00	Job		
	PVC Insulated FRLSH Copper wire (ISI Marked)- Skyline/ Finolex/ Havells/ Polycab				
	PVC Conduit- CAP/ BEC/ Sieko/ AKG				
	MCB 10kA "C" Characteristics L&T/ Siemens/ Schnider/ Legrand				
<b>10</b>	<b>LIGHT/FAN POINT</b>				
	Supply & Installation of concealed point wiring using 600v grade 1.5 Sq.mm copper conductor PVC insulated wires (with proper R,Y,B color code) pulled through heavy gauge PVC conduits laid concealed over false ceiling including 2 Nos. 2.5 sqmm circuit wires from the relevant DB and also including 2.5 sqmm green color copper earth wire and switch plate, switches, etc. as approved by the Bank's Engineer/Architect.				
a.	Primary light points including the cost of 10 A modular switch	16.00	Nos.		
c.	Ceiling Fan Point including the cost of 10A modular Switch along with 4/5 step electronic fan regulator.	4.00	Nos.		
d.	Wall Fan Point along with 10 AMP modular switch	6.00	Nos.		
e.	Exhaust Fan Point along with 10 AMP modular switch	1.00	Nos.		
f.	6/10A Switch with 5pin 10A socket in counter, light & fan board	5.00	Nos.		
<b>11</b>	<b>DATA CABLING &amp; POINT THERE MUST BE MINIMUM 3FEET DISTANCE BETWEEN DATA AND</b>				
	Supplying and laying of D-Link make CAT-6 (UTP) cable through trenches / conduits				
a.	Supplying and laying D-link make CAT-6 Cable complete with CAT-6 information outlet with plate & surface Box at individual Tables.	6.00	Nos.		
b.	Supplying and fixing of 2 mtr long crimped patch cord	6.00	Nos.		
e.	SITC of 9U Rack including wire manager, power supply card, hardwares etc. complete in all respects.	1.00	No.		
<b>13</b>	<b>FIXTURES</b>				
	SITC of following fixtures as per make list				
a	LED Tube Light Patti Type (white) - 20 Watts Make/ Brand as per MAKE LIST	16.00	Nos.		
b	Ceiling Fan - 1200mm Make/ Brand as per MAKE LIST	4.00	Nos.		
c	Wall Mounted 80/100 watt plastic body Fan - 400mm, 1300 to 1500RPM Make/ Brand as per MAKE LIST	6.00	Nos.		
d	Exhaust Fan Metal Body - 300mm Make/ Brand as per MAKE LIST	1.00	Nos.		
e	LED Bulb with holder (white) - 9 Watts	2.00	Nos.		
	<b>TOTAL (excl. GST) (Rs.)</b>				

Note: All rates are excluding G.S.T.



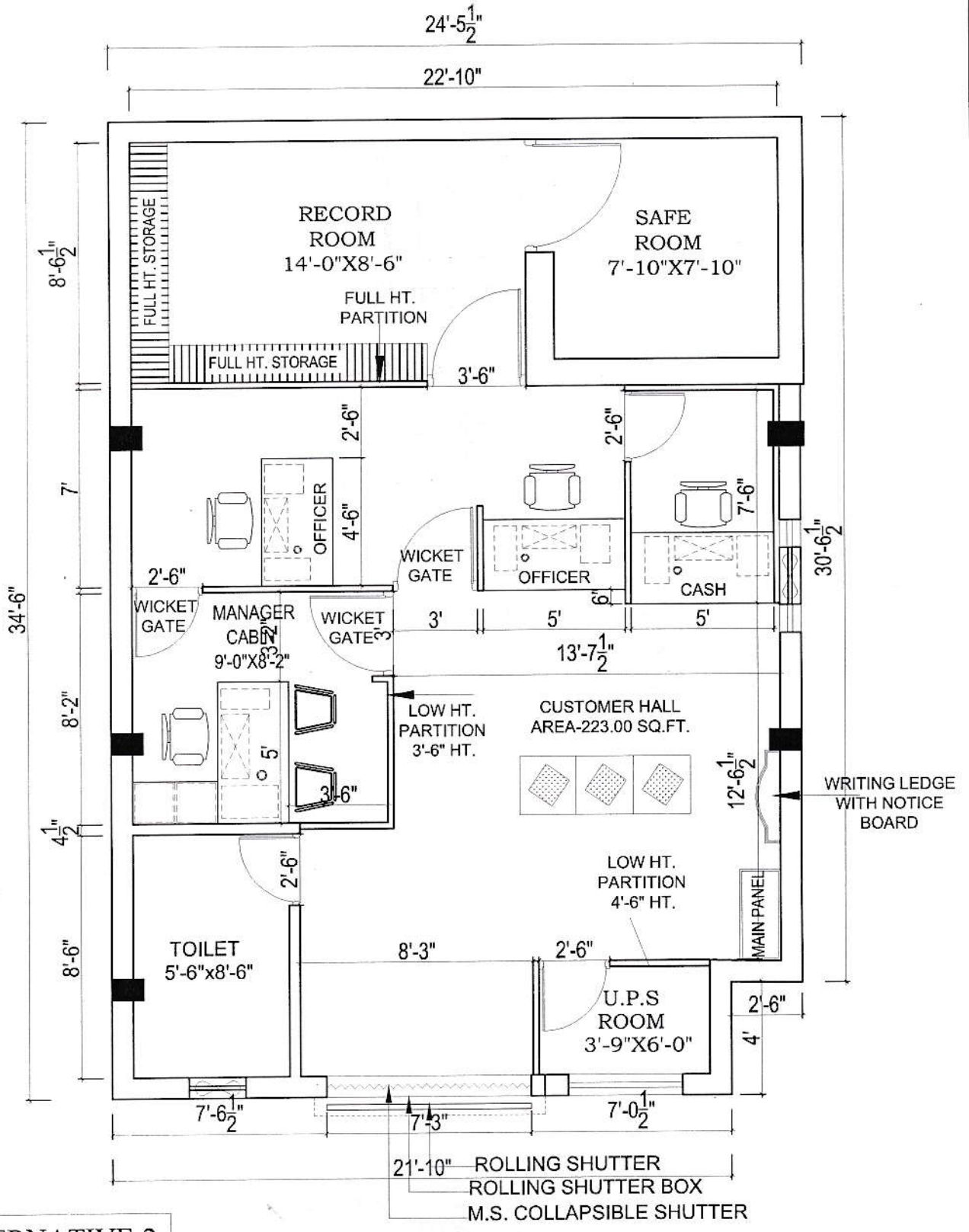
**Abstract of Cost for Baroda U.P. Bank**

**Branch at Pahadipur**

**Region - Kanpur Dehat**

<b>S.No.</b>	<b>DESCRIPTION</b>	<b>AMOUNT (Rs.)</b>
1	FURNISHING WORKS	
2	ELECTRICAL WORKS	
	<b>TOTAL (Rs.)</b>	

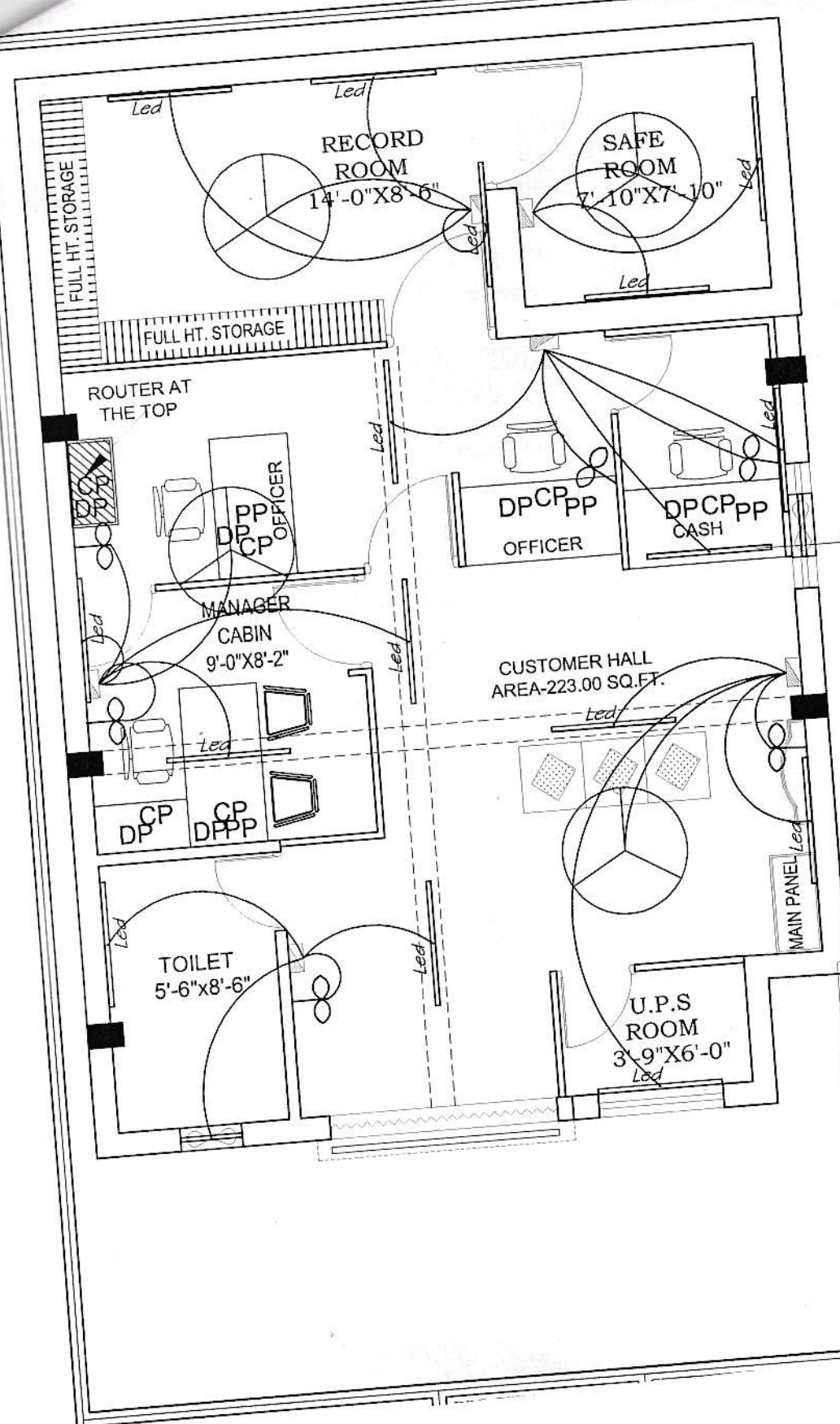
**Note: All rates are excluding G.S.T.**



ALTERNATIVE-2

PROJECT-





LEGENDS FOR FIXTURES & FITTINGS WITH QUANTITY

S.NO.	SYMBOL	DESCRIPTION	HT.
1.		4' long LED TUBE LIGHT	8'-0"
2.		CEILING FAN	
3.		Wall mounted Fan	6'-"
4.		AFF/ EXHAUST	8'-"
5.		LED bulb light holder	8'-"
6.		SWITCH BOARD	4'-"
7.		POWER/ COMPUTER/ DATA	1'-"
8.		MAIN LT PANEL	
9.		TPN Db	6'-"
10.		SPN Db	6'-"

PROJECT-